

For Research Use Only

# CRX Polyclonal ANTIBODY



Catalog Number: 12047-1-AP **1 Publications**

## Basic Information

**Catalog Number:**  
12047-1-AP

**Size:**  
150UL, Concentration: 340 µg/ml by Bradford method using BSA as the standard;

**Source:**  
Rabbit

**Isotype:**  
IgG

**Immunogen Catalog Number:**  
AG2677

**GenBank Accession Number:**  
BC016664

**GeneID (NCBI):**  
1406

**Full Name:**  
cone-rod homeobox

**Calculated MW:**  
299 aa, 32 kDa

**Observed MW:**  
32-37 kDa

**Purification Method:**  
Antigen affinity purification

**Recommended Dilutions:**  
WB 1:500-1:1000  
IP 0.5-4.0 µg for IP and 1:500-1:1000 for WB

## Applications

**Tested Applications:**  
IP, WB, ELISA

**Cited Applications:**  
CoIP, WB

**Species Specificity:**  
human, mouse, rat

**Cited Species:**  
human

**Positive Controls:**

WB: Y79 cells,

IP: Y79 cells,

## Background Information

Cone-rod homeobox (Crx) is a homeodomain transcription factor and member of the Otx family, which has been thought to play a critical role in determining and maintaining the phenotype of both pinealocytes and retinal photoreceptors [PMID:17467693]. In the mammalian retina, Crx plays an essential role in the normal development and maintenance of cones and rods and regulates expression of the network of genes that characterize the retina [PMID:17653270]. Elimination of Crx by disruption of the homeobox domain results in loss of the image-forming visual system but not the non-image-forming visual system controlling circadian rhythms [PMID:20438719].

## Notable Publications

| Author          | Pubmed ID | Journal    | Application |
|-----------------|-----------|------------|-------------|
| Tomohiro Masuda | 25392503  | J Neurosci | WB, CoIP    |

## Storage

**Storage:**

Store at -20°C. Stable for one year after shipment.

**Storage Buffer:**

PBS with 0.1% sodium azide and 50% glycerol pH 7.3.

Aliquoting is unnecessary for -20°C storage

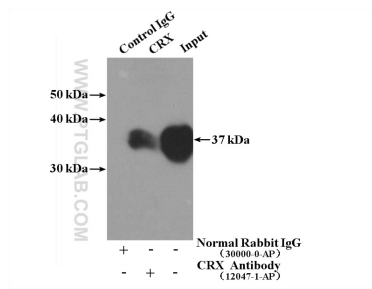
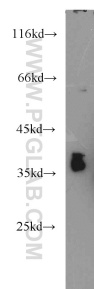
For technical support and original validation data for this product please contact:

T: 1 (888) 4PTGLAB (1-888-478-4522) (toll free in USA), or 1(312) 455-8498 (outside USA)

E: proteintech@ptglab.com  
W: ptglab.com

**This product is exclusively available under Proteintech Group brand and is not available to purchase from any other manufacturer.**

## Selected Validation Data



Y79 cells were subjected to SDS PAGE followed by western blot with 12047-1-AP (CRX antibody) at dilution of 1:500 incubated at room temperature for 1.5 hours.

IP Result of anti-CRX (IP:12047-1-AP, 4ug; Detection:12047-1-AP 1:500) with Y79 cells lysate 1920ug.