

For Research Use Only

ODF2 Polyclonal antibody

Catalog Number: 12058-1-AP

Featured Product

45 Publications



Basic Information

Catalog Number:

12058-1-AP

Size:

150ul, Concentration: 1000 ug/ml by Nanodrop and 533 ug/ml by Bradford method using BSA as the standard;

Source:

Rabbit

Isotype:

IgG

Immunogen Catalog Number:

AG2693

GenBank Accession Number:

BC010629

GeneID (NCBI):

4957

UNIPROT ID:

Q5BJF6

Full Name:

outer dense fiber of sperm tails 2

Calculated MW:

763 aa, 89 kDa

Observed MW:

67-100 kDa

Purification Method:

Antigen affinity purification

Recommended Dilutions:

WB: 1:500-1:1000

IP: 0.5-4.0 ug for 1.0-3.0 mg of total protein lysate

IHC: 1:50-1:500

IF/ICC: 1:10-1:100

Applications

Tested Applications:

WB, IHC, IF/ICC, IP, ELISA

Cited Applications:

WB, IHC, IF

Species Specificity:

human, mouse, rat

Cited Species:

human, mouse, rat

Note-IHC: suggested antigen retrieval with TE buffer pH 9.0; (*) Alternatively, antigen retrieval may be performed with citrate buffer pH 6.0

Positive Controls:

WB: mouse testis tissue, mouse lung tissue

IP: mouse testis tissue,

IHC: human breast cancer tissue,

IF/ICC: HeLa cells,

Background Information

ODF2 (outer dense fiber 2) is the major cenexin protein of the cytoskeleton of the sperm tail. In somatic cells, it is a component of the centrosome in which it is located in the appendages of the mother centriole. The gene for the cenexin protein, which was first identified as a protein marker of the mother centriole, was subsequently found to be identical to ODF2 and encodes transcripts cenexin 1 and cenexin 2. ODF2 is ubiquitously expressed in many cell types as various splicing variants. Additionally, ODF2 localizes to centrioles, basal bodies, and primary cilia, which are all structurally and functionally interconnected. ODF2 has 10 isoforms with MW 67-100 kDa.

Notable Publications

Author	Pubmed ID	Journal	Application
Zhengang Zhang	27682589	Mol Biol Cell	WB
Dong Kong	25246616	J Cell Biol	IF
Gladiola Goranci-Buzhala	34496239	Cell Rep	WB

Storage

Storage:

Store at -20°C. Stable for one year after shipment.

Storage Buffer:

PBS with 0.02% sodium azide and 50% glycerol, pH7.3

Aliquoting is unnecessary for -20°C storage

*** 20ul sizes contain 0.1% BSA

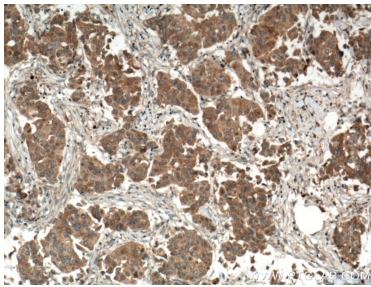
For technical support and original validation data for this product please contact:

T: 1 (888) 4PTGLAB (1-888-478-4522) (toll free in USA), or 1(312) 455-8498 (outside USA)

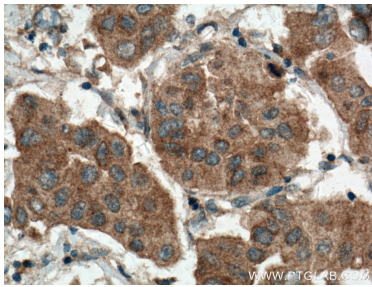
E: proteintech@ptglab.com
W: ptglab.com

This product is exclusively available under Proteintech Group brand and is not available to purchase from any other manufacturer.

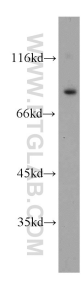
Selected Validation Data



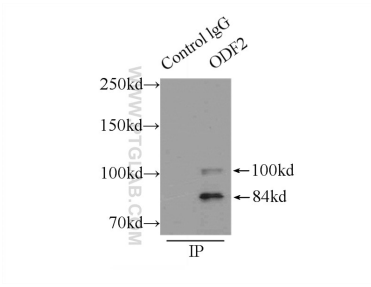
Immunohistochemical analysis of paraffin-embedded human breast cancer tissue slide using 12058-1-AP (ODF2 antibody) at dilution of 1:100 (under 10x lens. Heat mediated antigen retrieval with Tris-EDTA buffer (pH 9.0).



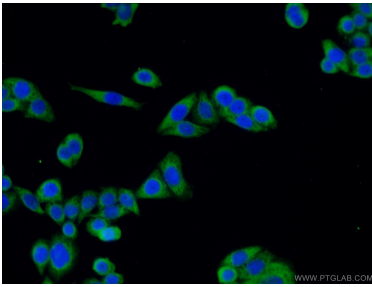
Immunohistochemical analysis of paraffin-embedded human breast cancer tissue slide using 12058-1-AP (ODF2 antibody) at dilution of 1:100 (under 40x lens. Heat mediated antigen retrieval with Tris-EDTA buffer (pH 9.0).



mouse testis tissue were subjected to SDS PAGE followed by western blot with 12058-1-AP (ODF2 antibody) at dilution of 1:500 incubated at room temperature for 1.5 hours.



IP result of anti-ODF2 (IP:12058-1-AP, 5ug; Detection:12058-1-AP 1:500) with mouse testis tissue lysate 8000ug.



Immunofluorescent analysis of HeLa cells using 12058-1-AP (ODF2 antibody) at dilution of 1:25 and Alexa Fluor 488-conjugated Goat Anti-Rabbit IgG(H+L).