

For Research Use Only

PSMD14/POH1 Polyclonal antibody

Catalog Number: 12059-1-AP

Featured Product

13 Publications



Basic Information

Catalog Number:

12059-1-AP

Size:

150ul, Concentration: 750 ug/ml by Nanodrop and 333 ug/ml by Bradford method using BSA as the standard;

Source:

Rabbit

Isotype:

IgG

Immunogen Catalog Number:

AG2694

GenBank Accession Number:

BC009524

GeneID (NCBI):

10213

UNIPROT ID:

O00487

Full Name:

proteasome (prosome, macropain)
26S subunit, non-ATPase, 14

Calculated MW:

35 kDa

Observed MW:

35 kDa

Purification Method:

Antigen affinity purification

Recommended Dilutions:

WB: 1:500-1:2000

IHC: 1:20-1:200

IF/ICC: 1:200-1:800

Applications

Tested Applications:

WB, IHC, IF/ICC, ELISA

Cited Applications:

WB, IHC, IF

Species Specificity:

human, mouse, rat

Cited Species:

human, mouse

Note-IHC: suggested antigen retrieval with TE buffer pH 9.0; (*) Alternatively, antigen retrieval may be performed with citrate buffer pH 6.0

Positive Controls:

WB: A431 cells, K-562 cells, rat heart tissue, HeLa cells, MCF-7 cells

IHC: human colon cancer tissue,

IF/ICC: A375 cells,

Background Information

The PSMD14 (POH1, also known as Rpn11/MPR1/S13/CepP1) protein is a metalloprotease component of the 26S proteasome that specifically cleaves 'Lys-63'-linked polyubiquitin chains. The 26S proteasome is involved in the ATP-dependent degradation of ubiquitinated proteins. PSMD14 is highly expressed in the heart and skeletal muscle. In carcinoma cell lines, down-regulation of PSMD14 by siRNA transfection had a considerable impact on cell viability causing cell arrest in the G0-G1 phase, ultimately leading to senescence.

Notable Publications

Author	Pubmed ID	Journal	Application
Zitong Zhao	36328147	Biochim Biophys Acta Mol Basis Dis	WB, IHC
Boshi Wang	26510456	Nat Commun	WB, IHC, IF
Guoqing Luo	28535005	Mol Med Rep	WB, IHC

Storage

Storage:

Store at -20°C. Stable for one year after shipment.

Storage Buffer:

PBS with 0.02% sodium azide and 50% glycerol, pH7.3

Aliquoting is unnecessary for -20°C storage

*** 20ul sizes contain 0.1% BSA

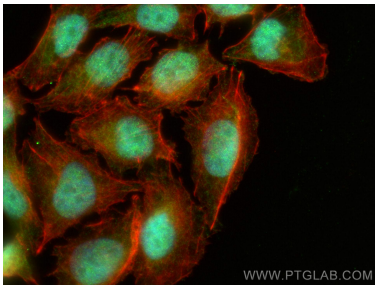
For technical support and original validation data for this product please contact:

T: 1 (888) 4PTGLAB (1-888-478-4522) (toll free in USA), or 1(312) 455-8498 (outside USA)

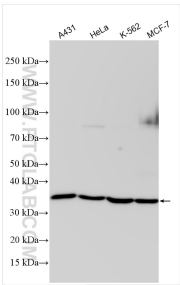
E: proteintech@ptglab.com
W: ptglab.com

This product is exclusively available under Proteintech Group brand and is not available to purchase from any other manufacturer.

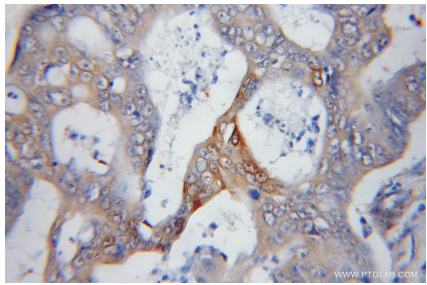
Selected Validation Data



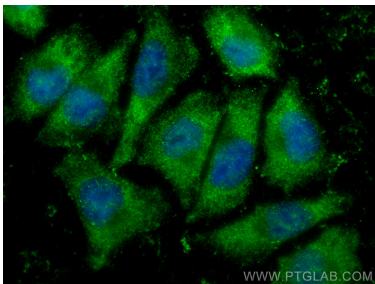
Immunofluorescent analysis of (4% PFA) fixed A375 cells using PSMD14/POH1 antibody (12059-1-AP) at dilution of 1:400 and CoraLite®488-Conjugated AffiniPure Goat Anti-Rabbit IgG(H+L), CL594-Phalloidin (red).



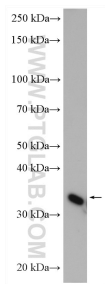
Various lysates were subjected to SDS PAGE followed by western blot with 12059-1-AP (PSMD14/POH1 antibody) at dilution of 1:1000 incubated at room temperature for 1.5 hours.



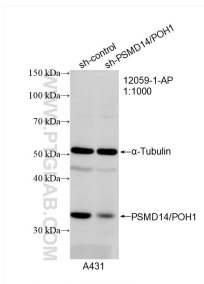
Immunohistochemical analysis of paraffin-embedded human colon cancer using 12059-1-AP (PSMD14/POH1 antibody) at dilution of 1:50 (under 10x lens).



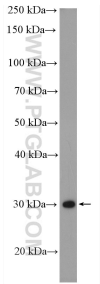
Immunofluorescent analysis of (-20°C Ethanol) fixed A375 cells using PSMD14/POH1 antibody (12059-1-AP) at dilution of 1:400 and CoraLite®488-Conjugated AffiniPure Goat Anti-Rabbit IgG(H+L).



rat heart tissue were subjected to SDS PAGE followed by western blot with 12059-1-AP (PSMD14/POH1 antibody) at dilution of 1:600 incubated at room temperature for 1.5 hours.



WB result of PSMD14/POH1 antibody (12059-1-AP; 1:1000; incubated at room temperature for 1.5 hours) with sh-Control and sh-PSMD14/POH1 transfected A431 cells.



A431 cells were subjected to SDS PAGE followed by western blot with 12059-1-AP (PSMD14/POH1 antibody) at dilution of 1:600 incubated at room temperature for 1.5 hours.