

For Research Use Only

SF3A3 Polyclonal antibody

Catalog Number: 12070-1-AP

Featured Product

4 Publications



Basic Information

Catalog Number:

12070-1-AP

Size:

150ul, Concentration: 850 ug/ml by Nanodrop;

Source:

Rabbit

Isotype:

IgG

Immunogen Catalog Number:

AG2708

GenBank Accession Number:

BC011523

GeneID (NCBI):

10946

UNIPROT ID:

Q12874

Full Name:

splicing factor 3a, subunit 3, 60kDa

Calculated MW:

501 aa, 59 kDa

Observed MW:

59 kDa

Purification Method:

Antigen affinity purification

Recommended Dilutions:

WB: 1:1000-1:6000

IP: 0.5-4.0 ug for 1.0-3.0 mg of total protein lysate

IHC: 1:50-1:500

IF/ICC: 1:50-1:500

Applications

Tested Applications:

WB, IHC, IF/ICC, IP, ELISA

Cited Applications:

WB

Species Specificity:

human, mouse, rat

Cited Species:

human, mouse, bovine

Note-IHC: suggested antigen retrieval with TE buffer pH 9.0; (*) Alternatively, antigen retrieval may be performed with citrate buffer pH 6.0

Positive Controls:

WB: A431 cells, Raji cells, A549 cells, K-562 cells, NIH/3T3 cells

IP: Raji cells,

IHC: human lung cancer tissue,

IF/ICC: HeLa cells,

Notable Publications

Author	Pubmed ID	Journal	Application
Jianguo Liu	36430657	Int J Mol Sci	WB
Han Wang	39995871	iScience	WB
Yuya Hirooka	39706051	Biochem Biophys Res Commun	WB

Storage

Storage:

Store at -20°C. Stable for one year after shipment.

Storage Buffer:

PBS with 0.02% sodium azide and 50% glycerol, pH7.3

Aliquoting is unnecessary for -20°C storage

*** 20ul sizes contain 0.1% BSA

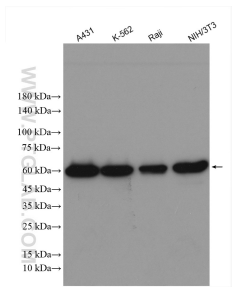
For technical support and original validation data for this product please contact:

T: 1 (888) 4PTGLAB (1-888-478-4522) (toll free in USA), or 1(312) 455-8498 (outside USA)

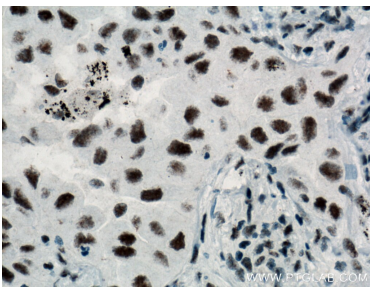
E: proteintech@ptglab.com
W: ptglab.com

This product is exclusively available under Proteintech Group brand and is not available to purchase from any other manufacturer.

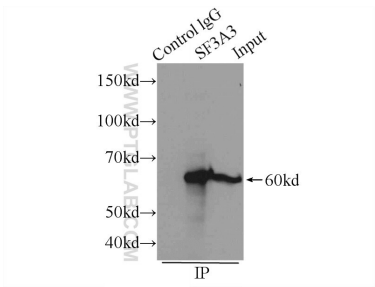
Selected Validation Data



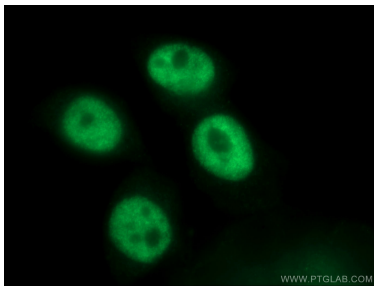
Various lysates were subjected to SDS PAGE followed by western blot with 12070-1-AP (SF3A3 antibody) at dilution of 1:3000 incubated at room temperature for 1.5 hours.



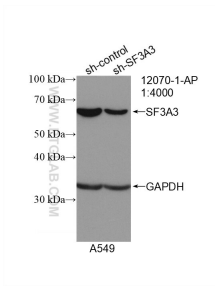
Immunohistochemical analysis of paraffin-embedded human lung cancer tissue slide using 12070-1-AP (SF3A3 antibody) at dilution of 1:200 (under 40x lens. Heat mediated antigen retrieval with Tris-EDTA buffer (pH 9.0).



IP result of anti-SF3A3 (IP:12070-1-AP, 4ug; Detection:12070-1-AP 1:600) with Raji cells lysate 2000ug.



Immunofluorescent analysis of (4% PFA) fixed HeLa cells using 12070-1-AP (SF3A3 antibody) at dilution of 1:50 and Alexa Fluor 488-conjugated Goat Anti-Rabbit IgG(H+L).



WB result of SF3A3 antibody (12070-1-AP; 1:4000; incubated at room temperature for 1.5 hours) with sh-Control and sh-SF3A3 transfected A549 cells.