

For Research Use Only

SLC25A10 Polyclonal antibody

Catalog Number: 12086-1-AP

Featured Product

5 Publications



Basic Information

Catalog Number:

12086-1-AP

Size:

150ul, Concentration: 550 ug/ml by Nanodrop;

Source:

Rabbit

Isotype:

IgG

Immunogen Catalog Number:

AG2719

GenBank Accession Number:

BC015797

GeneID (NCBI):

1468

UNIPROT ID:

Q9UBX3

Full Name:

solute carrier family 25 (mitochondrial carrier; dicarboxylate transporter), member 10

Calculated MW:

296 aa, 32 kDa

Observed MW:

29-31 kDa

Purification Method:

Antigen affinity purification

Recommended Dilutions:

WB: 1:500-1:2000

IP: 0.5-4.0 ug for 1.0-3.0 mg of total protein lysate

IHC: 1:50-1:500

IF/ICC: 1:50-1:500

Applications

Tested Applications:

WB, IHC, IF/ICC, IP, ELISA

Cited Applications:

WB, IHC, IF, CoIP

Species Specificity:

human, mouse, rat

Cited Species:

human, rat

Note-IHC: suggested antigen retrieval with TE buffer pH 9.0; (*) Alternatively, antigen retrieval may be performed with citrate buffer pH 6.0

Positive Controls:

WB: HEK-293 cells, A549 cells, mouse liver tissue, mouse kidney tissue, HepG2 cells, PC-3 cells

IP: mouse liver tissue,

IHC: human lung tissue, mouse kidney tissue

IF/ICC: U2OS cells,

Background Information

SLC25A10, also known as dicarboxylate ion carrier (DIC), is a mitochondrial inner membrane carrier protein which catalyzes the transport of dicarboxylates such as malate and succinate across the mitochondrial membrane in exchange for phosphate, sulfate, and thiosulfate. SLC25A10 is expressed at highest levels in kidney and liver, lower levels in lung, spleen, heart, and brain, and lowest levels in skeletal muscle. Two isoforms of SLC25A10 exist due to the alternative splicing.

Notable Publications

Author	Pubmed ID	Journal	Application
Borong Zhou	36104652	Hum Cell	WB, IHC
Gaoyuan Wang	32774476	Oncol Lett	WB, IHC
Guopeng Yu	40393974	Cell Death Discov	WB, CoIP

Storage

Storage:

Store at -20°C. Stable for one year after shipment.

Storage Buffer:

PBS with 0.02% sodium azide and 50% glycerol, pH7.3

Aliquoting is unnecessary for -20°C storage

*** 20ul sizes contain 0.1% BSA

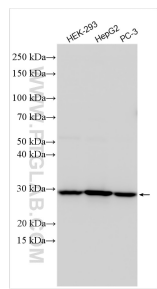
For technical support and original validation data for this product please contact:

T: 1 (888) 4PTGLAB (1-888-478-4522) (toll free in USA), or 1(312) 455-8498 (outside USA)

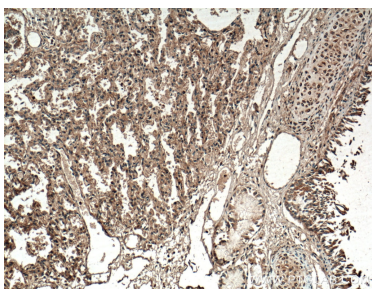
E: proteintech@ptglab.com
W: ptglab.com

This product is exclusively available under Proteintech Group brand and is not available to purchase from any other manufacturer.

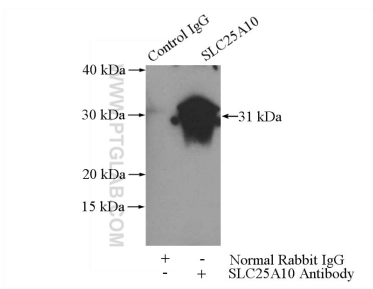
Selected Validation Data



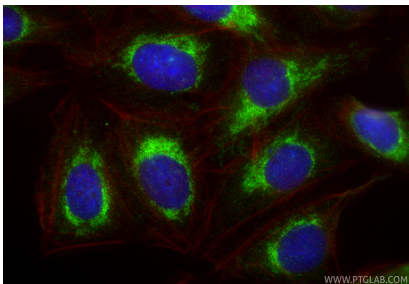
Various lysates were subjected to SDS PAGE followed by western blot with 12086-1-AP (SLC25A10 antibody) at dilution of 1:1000 incubated at room temperature for 1.5 hours.



Immunohistochemical analysis of paraffin-embedded human lung tissue slide using 12086-1-AP (SLC25A10 antibody) at dilution of 1:200 (under 10x lens. Heat mediated antigen retrieval with Tris-EDTA buffer (pH 9.0).



IP result of anti-SLC25A10 (IP:12086-1-AP, 3ug; Detection:12086-1-AP 1:500) with mouse liver tissue lysate 4000ug.



Immunofluorescent analysis of (4% PFA) fixed U2OS cells using SLC25A10 antibody (12086-1-AP) at dilution of 1:200 and CoraLite®488-Conjugated Goat Anti-Rabbit IgG(H+L) (SA00013-2), CL594-Phalloidin (red).