

For Research Use Only

PPM1M Polyclonal antibody

Catalog Number: 12104-1-AP



Basic Information

Catalog Number:

12104-1-AP

Size:

150UL, Concentration: 350 µg/ml by Nanodrop and 287 µg/ml by Bradford method using BSA as the standard;

Source:

Rabbit

Isotype:

IgG

Immunogen Catalog Number:

AG2748

GenBank Accession Number:

BC009644

GeneID (NCBI):

132160

Full Name:

protein phosphatase 1M (PP2C domain containing)

Calculated MW:

270 aa, 30 kDa

Observed MW:

30 kDa

Purification Method:

Antigen affinity purification

Recommended Dilutions:

WB 1:500-1:3000

IP 0.5-4.0 µg for IP and 1:200-1:1000 for WB

Applications

Tested Applications:

IP, WB, ELISA

Species Specificity:

human, mouse

Positive Controls:

WB: human lung tissue,

IP: mouse lung tissue,

Background Information

Storage

Storage:

Store at -20°C. Stable for one year after shipment.

Storage Buffer:

PBS with 0.02% sodium azide and 50% glycerol pH 7.3.

Aliquoting is unnecessary for -20°C storage

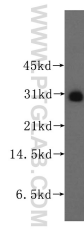
For technical support and original validation data for this product please contact:

T: 1 (888) 4PTGLAB (1-888-478-4522) (toll free in USA), or 1(312) 455-8498 (outside USA)

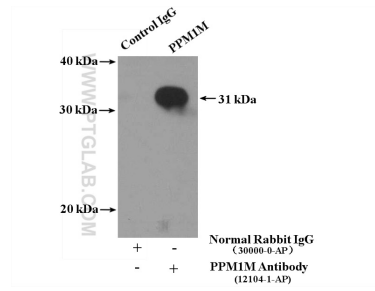
E: proteintech@ptglab.com
W: ptglab.com

This product is exclusively available under Proteintech Group brand and is not available to purchase from any other manufacturer.

Selected Validation Data



human lung tissue were subjected to SDS PAGE followed by western blot with 12104-1-AP (PPM1M antibody) at dilution of 1:500 incubated at room temperature for 1.5 hours.



IP Result of anti-PPM1M (IP:12104-1-AP, 4ug; Detection:12104-1-AP 1:300) with mouse lung tissue lysate 4000ug.