

For Research Use Only

# AP1M1 Polyclonal antibody

Catalog Number: 12112-1-AP

Featured Product

5 Publications



## Basic Information

**Catalog Number:**

12112-1-AP

**Size:**

150UL, Concentration: 133 µg/ml by Bradford method using BSA as the standard;

**Source:**

Rabbit

**Isotype:**

IgG

**Immunogen Catalog Number:**

AG2757

**GenBank Accession Number:**

BC017469

**GeneID (NCBI):**

8907

**Full Name:**

adaptor-related protein complex 1, mu 1 subunit

**Calculated MW:**

423 aa, 49 kDa

**Observed MW:**

49 kDa

**Purification Method:**

Antigen affinity purification

**Recommended Dilutions:**

WB 1:500-1:1000

IP 0.5-4.0 µg for IP and 1:500-1:1000 for WB

## Applications

**Tested Applications:**

IP, WB, ELISA

**Cited Applications:**

IF, WB

**Species Specificity:**

human, mouse, rat

**Cited Species:**

canine, human, mouse

**Positive Controls:**

WB: human brain tissue, Hacat cells

IP: SH-SY5Y cells,

## Background Information

AP1M1, also named as CLTNM, Mu-adaptin 1 and Clathrin coat assembly protein AP47, belongs to the adaptor complexes medium subunit family. It is a subunit of clathrin-associated adaptor protein complex 1 that plays a role in protein sorting in the trans-Golgi network (TGN) and endosomes. The AP complexes mediate the recruitment of clathrin to membranes and the recognition of sorting signals within the cytosolic tails of transmembrane cargo molecules.

## Notable Publications

Author	Pubmed ID	Journal	Application
Rajesh Abraham Jacob	28577469	Virology	WB
Saitoh Masao M	23675417	PLoS One	WB
Mathilde Bonnemaïson	25040637	Traffic	WB,IF

## Storage

**Storage:**

Store at -20°C. Stable for one year after shipment.

**Storage Buffer:**

PBS with 0.1% sodium azide and 50% glycerol pH 7.3.

Aliquoting is unnecessary for -20°C storage

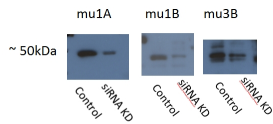
For technical support and original validation data for this product please contact:

T: 1 (888) 4PTGLAB (1-888-478-4522) (toll free in USA), or 1(312) 455-8498 (outside USA)

E: proteintech@ptglab.com  
W: ptglab.com

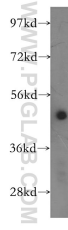
This product is exclusively available under Proteintech Group brand and is not available to purchase from any other manufacturer.

## Selected Validation Data

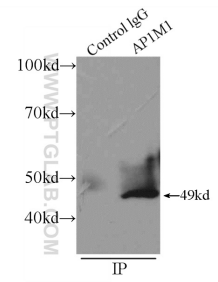


AP1M1 is mu1A: 12112-1-AP,  
 AP1M2 is mu1B: 10618-1-AP,  
 Ap3M2 is mu3B: 11925-1-AP,  
 acceptable bands ~50 kDa showing  
 some degree of siRNA  
 knockdown

WB result of AP1M1 antibody (12112-1-AP, 1:500)  
 with siRNA cell lysate.



human brain tissue were subjected to SDS PAGE  
 followed by western blot with 12112-1-AP (AP1M1  
 antibody) at dilution of 1:400 incubated at room  
 temperature for 1.5 hours.



IP Result of anti-AP1M1 (IP:12112-1-AP, 4ug;  
 Detection:12112-1-AP 1:500) with SH-SY5Y cells  
 lysate 2500ug.