

For Research Use Only

# GOPC Polyclonal ANTIBODY



Catalog Number: 12163-1-AP

## Basic Information

<b>Catalog Number:</b> 12163-1-AP	<b>GenBank Accession Number:</b> BC009553	<b>Purification Method:</b> Antigen affinity purification
<b>Size:</b> 150UL, Concentration: 267 µg/ml by Bradford method using BSA as the standard;	<b>GeneID (NCBI):</b> 57120	<b>Recommended Dilutions:</b> WB 1:500-1:2400 IHC 1:20-1:200 IF 1:50-1:500
<b>Source:</b> Rabbit	<b>Full Name:</b> golgi associated PDZ and coiled-coil motif containing	
<b>Isotype:</b> IgG	<b>Calculated MW:</b> 454 aa, 50 kDa	
<b>Immunogen Catalog Number:</b> AG2804	<b>Observed MW:</b> 50 kDa	

## Applications

<b>Tested Applications:</b> IF, IHC, WB, ELISA	<b>Positive Controls:</b> WB : K-562 cells, IHC : human pancreas cancer tissue, IF : HEK-293 cells,
<b>Species Specificity:</b> human, mouse, rat	
<b>Note-IHC: suggested antigen retrieval with TE buffer pH 9.0; (*) Alternatively, antigen retrieval may be performed with citrate buffer pH 6.0</b>	

## Background Information

GOPC (FIG/PIST/CAL) is a PDZ-domain scaffolding protein that regulates the trafficking of many integral membrane proteins, including cell surface receptors, ion channels and adhesion molecules. GOPC localizes to the trans-Golgi network (TGN) but not to the cis- or trans-Golgi cisternae, thus anti-GOPC can be used to label the TGN structure.

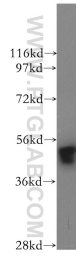
## Storage

**Storage:**  
Store at -20°C. Stable for one year after shipment.  
**Storage Buffer:**  
PBS with 0.1% sodium azide and 50% glycerol pH 7.3.  
Aliquoting is unnecessary for -20°C storage

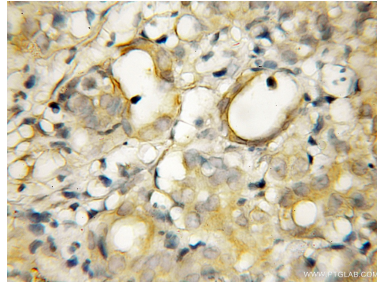
For technical support and original validation data for this product please contact:  
T: 1 (888) 4PTGLAB (1-888-478-4522) (toll free in USA), or 1(312) 455-8498 (outside USA)  
E: proteintech@ptglab.com  
W: ptglab.com

This product is exclusively available under Proteintech Group brand and is not available to purchase from any other manufacturer.

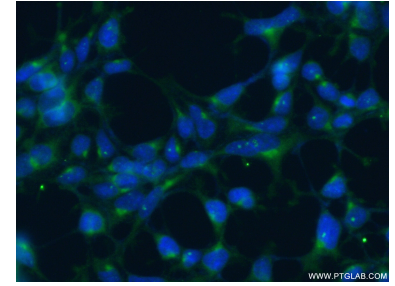
## Selected Validation Data



K-562 cells were subjected to SDS PAGE followed by western blot with 12163-1-AP (GOPC antibody) at dilution of 1:800 incubated at room temperature for 1.5 hours.



Immunohistochemical analysis of paraffin-embedded human pancreas cancer using 12163-1-AP (GOPC antibody) at dilution of 1:50 (under 10x lens).



Immunofluorescent analysis of (-20 Ethanol) fixed HEK-293 cells using 12163-1-AP (GOPC antibody) at dilution of 1:50 and Alexa Fluor 488-conjugated AffiniPure Goat Anti-Rabbit IgG(H+L).