

For Research Use Only

SMAD5 Polyclonal antibody

Catalog Number: 12167-1-AP

Featured Product

11 Publications



Basic Information

Catalog Number:

12167-1-AP

Size:

150ul, Concentration: 600 µg/ml by Nanodrop and 133 µg/ml by Bradford method using BSA as the standard;

Source:

Rabbit

Isotype:

IgG

Immunogen Catalog Number:

AG2809

GenBank Accession Number:

BC009682

GeneID (NCBI):

4090

Full Name:

SMAD family member 5

Calculated MW:

465 aa, 52 kDa

Observed MW:

52 kDa

Purification Method:

Antigen affinity purification

Recommended Dilutions:

WB 1:500-1:2000

IP 0.5-4.0 ug for IP and 1:500-1:2000 for WB

IF 1:10-1:100

Applications

Tested Applications:

FC, IF, IP, WB, ELISA

Cited Applications:

FC, WB

Species Specificity:

human, mouse, rat

Cited Species:

human, mouse, rat

Positive Controls:

WB : K-562 cells,

IP : K-562 cells,

IF : MCF-7 cells,

Background Information

SMAD5, also named as MADH5 and JV5-1, is a transcriptional modulator activated by BMP (bone morphogenetic proteins) type 1 receptor kinase. SMAD5 is a receptor-regulated SMAD (R-SMAD). It plays a critical role in the signaling pathway by which TGF-beta inhibits the proliferation of human hematopoietic progenitor cells.

Notable Publications

Author	Pubmed ID	Journal	Application
Xueni Wang	32879393	Sci Rep	WB
Jinliang Chen	29715457	Biochem Biophys Res Commun	WB
Zhang Xing-Yi XY	23527070	PLoS One	WB

Storage

Storage:

Store at -20°C. Stable for one year after shipment.

Storage Buffer:

PBS with 0.02% sodium azide and 50% glycerol pH 7.3.

Aliquoting is unnecessary for -20°C storage

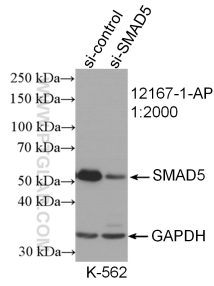
For technical support and original validation data for this product please contact:

T: 1 (888) 4PTGLAB (1-888-478-4522) (toll free in USA), or 1(312) 455-8498 (outside USA)

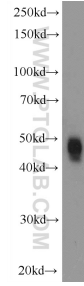
E: proteintech@ptglab.com
W: ptglab.com

This product is exclusively available under Proteintech Group brand and is not available to purchase from any other manufacturer.

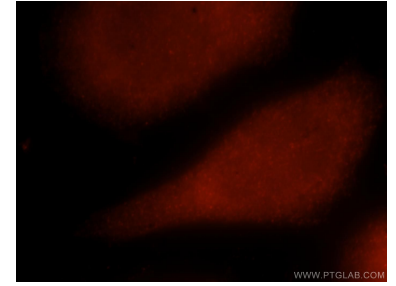
Selected Validation Data



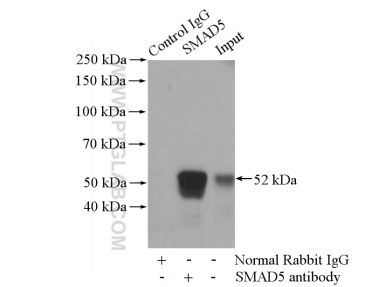
WB result of SMAD5 antibody (12167-1-AP; 1:2000; incubated at room temperature for 1.5 hours) with sh-Control and sh-SMAD5 transfected K-562 cells.



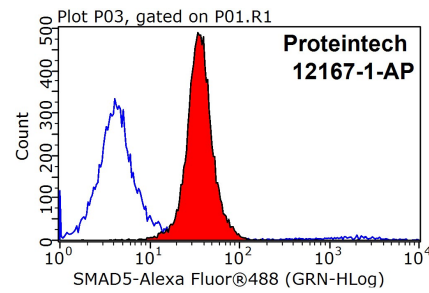
K-562 cells were subjected to SDS PAGE followed by western blot with 12167-1-AP (SMAD5 Antibody) at dilution of 1:1000 incubated at 4 degree celsius over night.



Immunofluorescent analysis of MCF-7 cells, using SMAD5 antibody 12167-1-AP at 1:25 dilution and Rhodamine-labeled goat anti-rabbit IgG (red).



IP Result of anti-SMAD5 (IP:12167-1-AP, 4ug; Detection:12167-1-AP 1:1000) with K-562 cells lysate 3200ug.



1X10⁶ MCF-7 cells were stained with 0.2ug SMAD5 antibody (12167-1-AP, red) and control antibody (blue). Fixed with 90% MeOH blocked with 3% BSA (30 min). Alexa Fluor 488-conjugated AffiniPure Goat Anti-Rabbit IgG(H+L) with dilution 1:1000.