

For Research Use Only

# WWP2 Polyclonal antibody

Catalog Number: 12197-1-AP **6 Publications**



## Basic Information

<b>Catalog Number:</b> 12197-1-AP	<b>GenBank Accession Number:</b> BC013645	<b>Purification Method:</b> Antigen affinity purification
<b>Size:</b> 150ul , Concentration: 200 µg/ml by Nanodrop and 200 µg/ml by Bradford method using BSA as the standard;	<b>GeneID (NCBI):</b> 11060	<b>Recommended Dilutions:</b> WB 1:500-1:1000 IHC 1:20-1:200
<b>Source:</b> Rabbit	<b>Full Name:</b> WW domain containing E3 ubiquitin protein ligase 2	
<b>Isotype:</b> IgG	<b>Calculated MW:</b> 870 aa, 99 kDa	
<b>Immunogen Catalog Number:</b> AG2835	<b>Observed MW:</b> 110-115 kDa	

## Applications

<b>Tested Applications:</b> IHC, WB, ELISA	<b>Positive Controls:</b> WB : mouse liver tissue, A549 cells IHC : human pancreas cancer tissue,
<b>Cited Applications:</b> IF, IHC, WB	
<b>Species Specificity:</b> human, mouse, rat	
<b>Cited Species:</b> human, mouse	
<b>Note-IHC: suggested antigen retrieval with TE buffer pH 9.0; (*) Alternatively, antigen retrieval may be performed with citrate buffer pH 6.0</b>	

## Background Information

WWP2(WW domain-containing protein 2) is also named as AIP2 and belongs to the NEDD4-like protein family. It functions as an E3 ubiquitin ligase for PTEN that plays a vital role in tumour-cell survival and is also involved in regulating transcription, embryonic stem-cell fate, cellular transport and T-cell activation processes(PMID:21532586).WWP2, which specifically interacted with ES cell-specific transcription factor Oct-4 and promoted its ubiquitination both in vitro and in vivo, is a ubiquitously expressed protein and exists in both cytoplasmic and nuclear compartments in ES cells(PMID:15047715).

## Notable Publications

Author	Pubmed ID	Journal	Application
Mao-Xu Ge	31621893	Br J Pharmacol	WB
J Fu	33164644	J Dent Res	WB,IHC,IF
Naijin Zhang	32139900	Cell Death Differ	WB

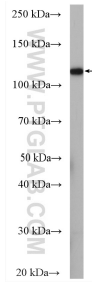
## Storage

**Storage:**  
Store at -20°C. Stable for one year after shipment.  
**Storage Buffer:**  
PBS with 0.02% sodium azide and 50% glycerol pH 7.3.  
Aliquoting is unnecessary for -20°C storage

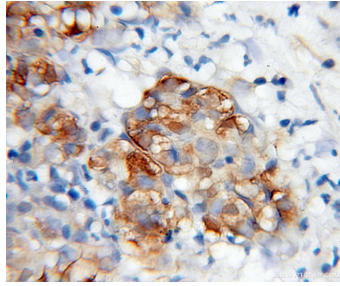
For technical support and original validation data for this product please contact:  
T: 1 (888) 4PTGLAB (1-888-478-4522) (toll free in USA), or 1(312) 455-8498 (outside USA)  
E: proteintech@ptglab.com  
W: ptglab.com

**This product is exclusively available under Proteintech Group brand and is not available to purchase from any other manufacturer.**

## Selected Validation Data



mouse liver tissue were subjected to SDS PAGE followed by western blot with 12197-1-AP (WWP2 antibody) at dilution of 1:500 incubated at room temperature for 1.5 hours.



Immunohistochemical analysis of paraffin-embedded human pancreas cancer using 12197-1-AP (WWP2 antibody) at dilution of 1:100 (under 40x lens).