

For Research Use Only

ABHD5 Polyclonal antibody

Catalog Number: 12201-1-AP

Featured Product

31 Publications



Basic Information

Catalog Number:

12201-1-AP

Size:

150ul, Concentration: 600 ug/ml by Nanodrop;

Source:

Rabbit

Isotype:

IgG

Immunogen Catalog Number:

AG2840

GenBank Accession Number:

BC021958

GeneID (NCBI):

51099

UNIPROT ID:

Q8WTS1

Full Name:

abhydrolase domain containing 5

Calculated MW:

349 aa, 39 kDa

Observed MW:

39 kDa

Purification Method:

Antigen affinity purification

Recommended Dilutions:

WB: 1:1000-1:6000

IP: 0.5-4.0 ug for 1.0-3.0 mg of total protein lysate

IHC: 1:500-1:2000

IF/ICC: 1:200-1:800

Applications

Tested Applications:

WB, IHC, IF/ICC, IP, ELISA

Cited Applications:

WB, IF, IP, ColP

Species Specificity:

human, mouse

Cited Species:

human, mouse, pig

Note-IHC: suggested antigen retrieval with TE buffer pH 9.0; (*) Alternatively, antigen retrieval may be performed with citrate buffer pH 6.0

Positive Controls:

WB: A431 cells, A549 cells, HCT 116 cells, HeLa cells, HepG2 cells, LNCaP cells, NIH/3T3 cells

IP: Jurkat cells,

IHC: human colon tissue, human kidney tissue, human liver tissue, human skeletal muscle tissue

IF/ICC: MCF-7 cells,

Background Information

ABHD5, also named as NCIE2 and CGI-58, belongs to the peptidase S33 family. ABHD4/ABHD5 subfamily. It is a Lysophosphatidic acid acyltransferase which functions in phosphatidic acid biosynthesis. ABHD5 may regulate the cellular storage of triacylglycerol through activation of the phospholipase PNPLA2. It is involved in keratinocyte differentiation. ABHD5 is an evolutionarily conserved protein that acts as a potent activator of Atgl. Abhd5 is expressed in several tissues that lack Plin, raising the possibility that this co-activator might interact with additional PAT proteins. Abhd5 and Mldp are highly colocalized on individual lipid droplets. (PMID:19064991) Defects in ABHD5 are the cause of Chanarin-Dorfman syndrome (CDS).

Notable Publications

Author	Pubmed ID	Journal	Application
Ximing Du	31653673	J Cell Biol	WB
Xiaodong Zhang	25315694	Am J Physiol Endocrinol Metab	WB
Guohua Chen	33219129	J Biol Chem	WB

Storage

Storage:

Store at -20°C. Stable for one year after shipment.

Storage Buffer:

PBS with 0.02% sodium azide and 50% glycerol, pH7.3

Aliquoting is unnecessary for -20°C storage

*** 20ul sizes contain 0.1% BSA

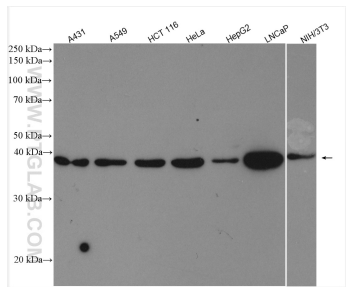
For technical support and original validation data for this product please contact:

T: 1 (888) 4PTGLAB (1-888-478-4522) (toll free in USA), or 1(312) 455-8498 (outside USA)

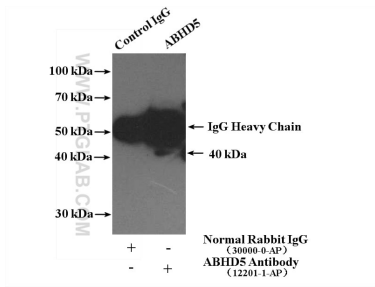
E: proteintech@ptglab.com
W: ptglab.com

This product is exclusively available under Proteintech Group brand and is not available to purchase from any other manufacturer.

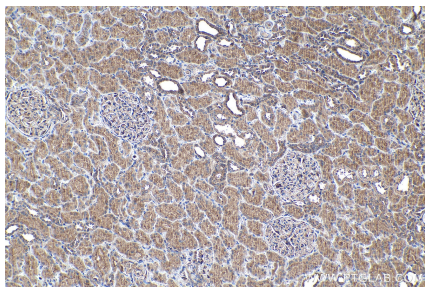
Selected Validation Data



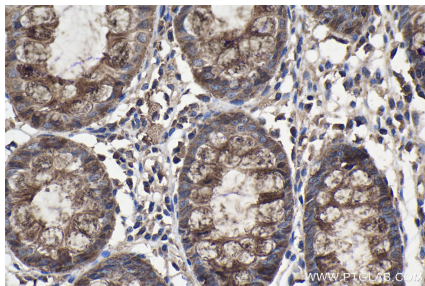
Various lysates were subjected to SDS PAGE followed by western blot with 12201-1-AP (ABHD5 antibody) at dilution of 1:3000 incubated at room temperature for 1.5 hours.



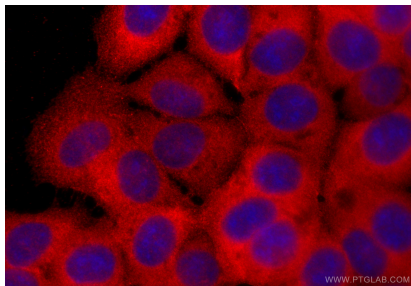
IP result of anti-ABHD5 (IP:12201-1-AP, 4ug; Detection:12201-1-AP 1:500) with Jurkat cells lysate 4000ug.



Immunohistochemical analysis of paraffin-embedded human kidney tissue slide using 12201-1-AP (ABHD5 antibody) at dilution of 1:1000 (under 10x lens). Heat mediated antigen retrieval with Tris-EDTA buffer (pH 9.0).



Immunohistochemical analysis of paraffin-embedded human colon tissue slide using 12201-1-AP (ABHD5 antibody) at dilution of 1:1000 (under 40x lens). Heat mediated antigen retrieval with Tris-EDTA buffer (pH 9.0).



Immunofluorescent analysis of (-20°C Methanol) fixed MCF-7 cells using ABHD5 antibody (12201-1-AP) at dilution of 1:400 and CoraLite®594-Conjugated Goat Anti-Rabbit IgG(H+L) (SA00013-4).