

For Research Use Only

MATR3 Polyclonal antibody

Catalog Number: 12202-2-AP

15 Publications



Basic Information

Catalog Number:

12202-2-AP

Size:

150ul, Concentration: 350 ug/ml by Nanodrop and 333 ug/ml by Bradford method using BSA as the standard;

Source:

Rabbit

Isotype:

IgG

Immunogen Catalog Number:

AG2843

GenBank Accession Number:

BC015031

GeneID (NCBI):

9782

UNIPROT ID:

P43243

Full Name:

matrin 3

Calculated MW:

847 aa, 95 kDa

Observed MW:

125 kDa

Purification Method:

Antigen affinity purification

Recommended Dilutions:

WB 1:500-1:2000

IHC 1:250-1:1000

IF/ICC 1:200-1:800

Applications

Tested Applications:

WB, IHC, IF/ICC, ELISA

Cited Applications:

WB, IHC, IF, IP

Species Specificity:

human, mouse, rat

Cited Species:

human, mouse

Note-IHC: suggested antigen retrieval with TE buffer pH 9.0; (*) Alternatively, antigen retrieval may be performed with citrate buffer pH 6.0

Positive Controls:

WB : MCF-7 cells,

IHC : human lung cancer tissue, mouse testis tissue

IF/ICC : SH-SY5Y cells, HEK-293 cells

Background Information

MATR3, known as KIAA0723, is an 847 amino acid protein, which may play a role in transcription or may interact with other nuclear matrix proteins to form the internal fibrogranular network. MATR3 was originally identified as a nuclear matrix protein containing both DNA and RNA binding domains (PMID: 2033075) with a wide variety of functions ranging from DNA damage response to transcriptional and post-transcriptional regulation of cellular and viral RNAs (PMID: 21771346). The calculated molecular weight of MATR3 is 94 kDa, but we detect a 125 kDa protein as a result of PMID: 28977530.

Notable Publications

Author	Pubmed ID	Journal	Application
Haiyan An	31636118	J Cell Biol	WB
Hiroaki Suzuki	31582731	Cell Death Dis	WB
Zewei Sun	36368640	Clin Immunol	WB, IF, IP

Storage

Storage:

Store at -20°C. Stable for one year after shipment.

Storage Buffer:

PBS with 0.02% sodium azide and 50% glycerol, pH7.3

Aliquoting is unnecessary for -20°C storage

*** 20ul sizes contain 0.1% BSA

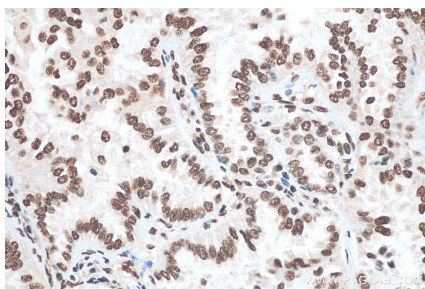
For technical support and original validation data for this product please contact:

T: 1 (888) 4PTGLAB (1-888-478-4522) (toll free in USA), or 1(312) 455-8498 (outside USA)

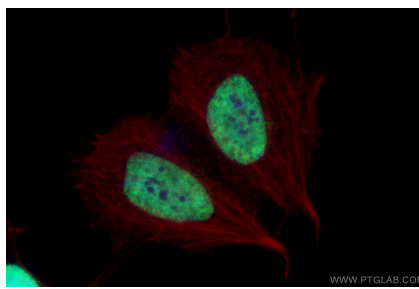
E: proteintech@ptglab.com
W: ptglab.com

This product is exclusively available under Proteintech Group brand and is not available to purchase from any other manufacturer.

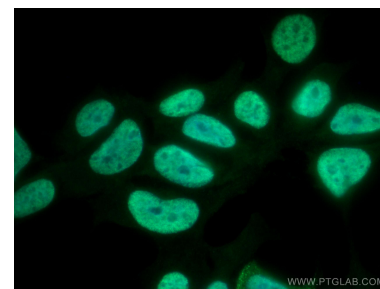
Selected Validation Data



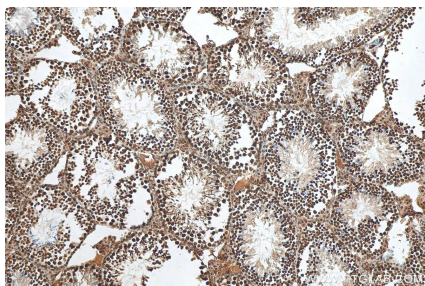
Immunohistochemical analysis of paraffin-embedded human lung cancer tissue slide using 12202-2-AP (MATR3 antibody) at dilution of 1:500 (under 40x lens). Heat mediated antigen retrieval with Tris-EDTA buffer (pH 9.0).



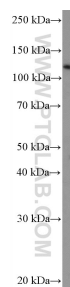
Immunofluorescent analysis of (4% PFA) fixed SH-SY5Y cells using MATR3 antibody (12202-2-AP) at dilution of 1:400 and CoraLite®488-Conjugated AffiniPure Goat Anti-Rabbit IgG(H+L), CL594-Phalloidin (red).



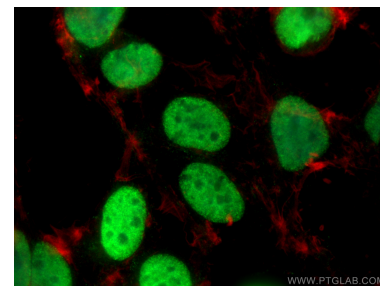
Immunofluorescent analysis of (4% PFA) fixed HEK-293 cells using MATR3 antibody (12202-2-AP) at dilution of 1:400 and CoraLite®488-Conjugated AffiniPure Goat Anti-Rabbit IgG(H+L).



Immunohistochemical analysis of paraffin-embedded mouse testis tissue slide using 12202-2-AP (MATR3 antibody) at dilution of 1:500 (under 10x lens). Heat mediated antigen retrieval with Tris-EDTA buffer (pH 9.0).



MCF-7 cells were subjected to SDS PAGE followed by western blot with 12202-2-AP (MATR3 Antibody) at dilution of 1:1000 incubated at room temperature for 1.5 hours.



Immunofluorescent analysis of (4% PFA) fixed HEK-293 cells using MATR3 antibody (12202-2-AP) at dilution of 1:1000 and CoraLite®488-Conjugated AffiniPure Goat Anti-Rabbit IgG(H+L) (SA00013-2), CL594-Phalloidin (red).