

For Research Use Only

PEPD Polyclonal antibody

Catalog Number: 12218-1-AP

Featured Product

3 Publications



Basic Information

Catalog Number:

12218-1-AP

Size:

150ul, Concentration: 500 ug/ml by Nanodrop and 267 ug/ml by Bradford method using BSA as the standard;

Source:

Rabbit

Isotype:

IgG

Immunogen Catalog Number:

AG2842

GenBank Accession Number:

BC015027

GeneID (NCBI):

5184

UNIPROT ID:

P12955

Full Name:

peptidase D

Calculated MW:

493 aa, 55 kDa

Observed MW:

55 kDa

Purification Method:

Antigen affinity purification

Recommended Dilutions:

WB: 1:500-1:3000

IHC: 1:100-1:800

IF/ICC: 1:200-1:800

Applications

Tested Applications:

WB, IHC, IF/ICC, ELISA

Cited Applications:

WB, IHC

Species Specificity:

human, mouse

Cited Species:

human

Note-IHC: suggested antigen retrieval with TE buffer pH 9.0; (*) Alternatively, antigen retrieval may be performed with citrate buffer pH 6.0

Positive Controls:

WB: HEK-293 cells, MDA-MB-453s cells, mouse skin tissue, HeLa cells, HepG2 cells, SH-SY5Y cells

IHC: human lung cancer tissue,

IF/ICC: A549 cells,

Background Information

PEPD, also named as PRD, Prolidase, X-Pro dipeptidase, Imidodipeptidase, Peptidase D and Proline dipeptidase, belongs to the peptidase M24B family and Eukaryotic-type prolidase subfamily. PEPD splits dipeptides with a prolyl or hydroxyprolyl residue in the C-terminal position. It plays an important role in collagen metabolism because the high level of iminoacids in collagen. Defects in PEPD are a cause of prolidase deficiency (PD). PEPD is considered as the most promising candidate genes for altering AAA risk, based on gene function, association evidence, gene expression, and protein expression.(PMID:21247474)

Notable Publications

Author	Pubmed ID	Journal	Application
Aydemir Koçarslan	27387023	Arch Med Res	IHC
Lillvis John H JH	21247474	BMC Med Genet	IHC
Ya Nan Zhu	38773155	Nat Commun	WB

Storage

Storage:

Store at -20°C. Stable for one year after shipment.

Storage Buffer:

PBS with 0.02% sodium azide and 50% glycerol, pH7.3

Aliquoting is unnecessary for -20°C storage

*** 20ul sizes contain 0.1% BSA

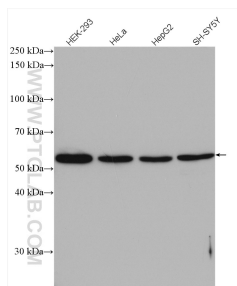
For technical support and original validation data for this product please contact:

T: 1 (888) 4PTGLAB (1-888-478-4522) (toll free in USA), or 1(312) 455-8498 (outside USA)

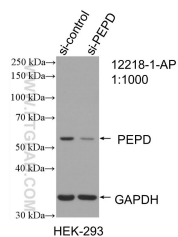
E: proteintech@ptglab.com
W: ptglab.com

This product is exclusively available under Proteintech Group brand and is not available to purchase from any other manufacturer.

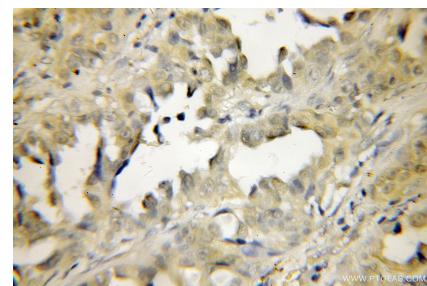
Selected Validation Data



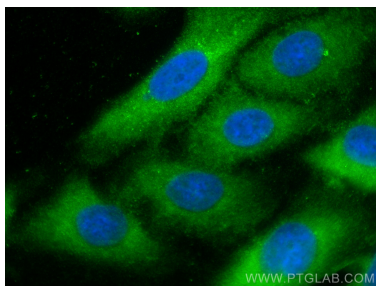
Various lysates were subjected to SDS PAGE followed by western blot with 12218-1-AP (PEPD antibody) at dilution of 1:1000 incubated at room temperature for 1.5 hours.



WB result of PEPD antibody (12218-1-AP; 1:1000; incubated at room temperature for 1.5 hours) with sh-Control and sh-PEPD transfected HEK-293 cells.



Immunohistochemical analysis of paraffin-embedded human lung cancer using 12218-1-AP (PEPD antibody) at dilution of 1:50 (under 10x lens).



Immunofluorescent analysis of (-20°C Methanol) fixed A549 cells using PEPD antibody (12218-1-AP) at dilution of 1:400 and CoraLite®488-Conjugated Goat Anti-Rabbit IgG(H+L) (SA00013-2).