

For Research Use Only

SH2B1 Polyclonal ANTIBODY

Catalog Number: 12226-1-AP



Basic Information

Catalog Number:

12226-1-AP

Size:

150UL, Concentration: 287 µg/ml by Bradford method using BSA as the standard;

Source:

Rabbit

Isotype:

IgG

Immunogen Catalog Number:

AG2863

GenBank Accession Number:

BC010704

GeneID (NCBI):

25970

Full Name:

SH2B adaptor protein 1

Calculated MW:

426 aa, 45 kDa

Observed MW:

80 kDa

Purification Method:

Antigen affinity purification

Recommended Dilutions:

WB 1:500-1:1000

IP 0.5-4.0 µg for IP and 1:500-1:1000 for WB

IHC 1:20-1:200

IF 1:20-1:200

Applications

Tested Applications:

IF, IHC, IP, WB, ELISA

Species Specificity:

human

Note-IHC: suggested antigen retrieval with TE buffer pH 9.0; (*) Alternatively, antigen retrieval may be performed with citrate buffer pH 6.0

Positive Controls:

WB: HEK-293 cells,

IP: HEK-293 cells,

IHC: human ovary tissue, human skeletal muscle tissue

IF: HeLa cells,

Background Information

SH2B1 is a member of the SH2-domain containing mediators family. SH2B1 has been shown to interact with INS receptor, Grb2, TrkA and Janus kinase 2. Variations close to or in the SH2B1 gene have been found to associate with obesity in two large genome wide association studies of body mass index (PMID: 19079260). SH2B1 deletions are associated with severe early-onset obesity (PMID: 19966786).

Storage

Storage:

Store at -20°C. Stable for one year after shipment.

Storage Buffer:

PBS with 0.1% sodium azide and 50% glycerol pH 7.3.

Aliquoting is unnecessary for -20°C storage

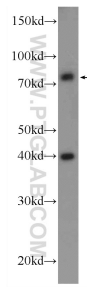
For technical support and original validation data for this product please contact:

T: 1 (888) 4PTGLAB (1-888-478-4522) (toll free in USA), or 1(312) 455-8498 (outside USA)

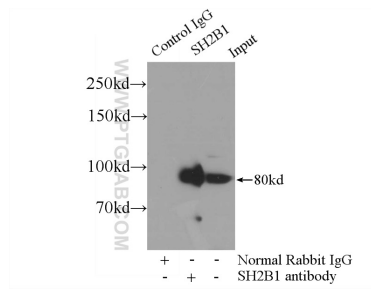
E: proteintech@ptglab.com
W: ptglab.com

This product is exclusively available under Proteintech Group brand and is not available to purchase from any other manufacturer.

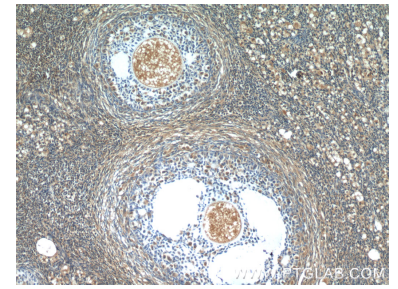
Selected Validation Data



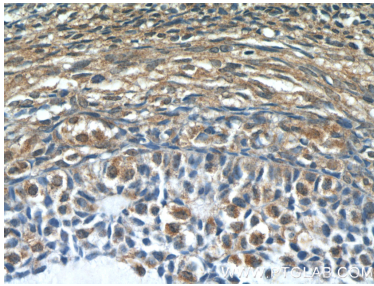
HEK-293 cells were subjected to SDS PAGE followed by western blot with 12226-1-AP (SH2B1 Antibody) at dilution of 1:600 incubated at room temperature for 1.5 hours.



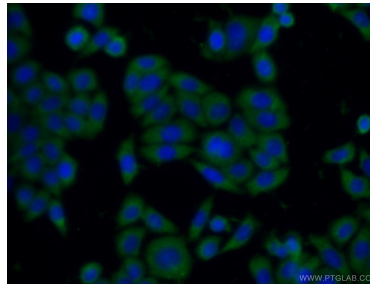
IP Result of anti-SH2B1 (IP:12226-1-AP, 4ug; Detection:12226-1-AP 1:600) with HEK-293 cells lysate 3000ug.



Immunohistochemical analysis of paraffin-embedded human ovary tissue slide using 12226-1-AP (SH2B1 Antibody) at dilution of 1:50 (under 10x lens).



Immunohistochemical analysis of paraffin-embedded human ovary tissue slide using 12226-1-AP (SH2B1 Antibody) at dilution of 1:50 (under 40x lens).



Immunofluorescent analysis of HeLa cells using 12226-1-AP (SH2B1 antibody) at dilution of 1:50 and Alexa Fluor 488-conjugated AffiniPure Goat Anti-Rabbit IgG(H+L).