

For Research Use Only

# EIF4E2 Polyclonal antibody

Catalog Number: 12227-1-AP



## Basic Information

**Catalog Number:**

12227-1-AP

**Size:**

150UL, Concentration: 600 µg/ml by Nanodrop and 220 µg/ml by Bradford method using BSA as the standard;

**Source:**

Rabbit

**Isotype:**

IgG

**Immunogen Catalog Number:**

AG2864

**GenBank Accession Number:**

BC021690

**GeneID (NCBI):**

9470

**Full Name:**

eukaryotic translation initiation factor 4E family member 2

**Calculated MW:**

245 aa, 28 kDa

**Observed MW:**

28 kDa

**Purification Method:**

Antigen affinity purification

**Recommended Dilutions:**

WB 1:500-1:1000

IP 0.5-4.0 µg for IP and 1:500-1:1000 for WB

IHC 1:50-1:500

## Applications

**Tested Applications:**

IHC, IP, WB, ELISA

**Species Specificity:**

human, mouse, rat

**Note-IHC: suggested antigen retrieval with TE buffer pH 9.0; (\*) Alternatively, antigen retrieval may be performed with citrate buffer pH 6.0**

**Positive Controls:**

WB: HeLa cells, MCF-7 cells, mouse kidney tissue

IP: MCF-7 cells,

IHC: human breast cancer tissue,

## Background Information

### Storage

**Storage:**

Store at -20°C. Stable for one year after shipment.

**Storage Buffer:**

PBS with 0.02% sodium azide and 50% glycerol pH 7.3.

Aliquoting is unnecessary for -20°C storage

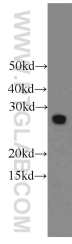
For technical support and original validation data for this product please contact:

T: 1 (888) 4PTGLAB (1-888-478-4522) (toll free in USA), or 1(312) 455-8498 (outside USA)

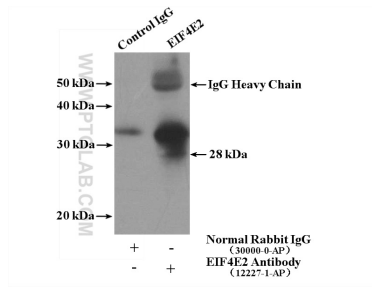
E: [proteintech@ptglab.com](mailto:proteintech@ptglab.com)  
W: [ptglab.com](http://ptglab.com)

**This product is exclusively available under Proteintech Group brand and is not available to purchase from any other manufacturer.**

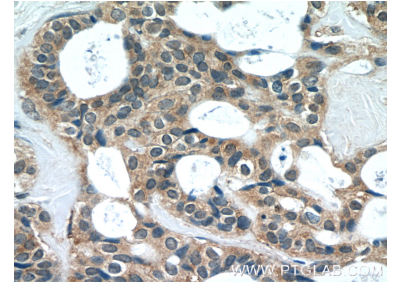
## Selected Validation Data



HeLa cells were subjected to SDS PAGE followed by western blot with 12227-1-AP (EIF4E2 antibody) at dilution of 1:500 incubated at room temperature for 1.5 hours.



IP Result of anti-EIF4E2 (IP:12227-1-AP, 4ug; Detection:12227-1-AP 1:500) with MCF-7 cells lysate 1280ug.



Immunohistochemical analysis of paraffin-embedded human breast cancer tissue slide using 12227-1-AP (EIF4E2 Antibody) at dilution of 1:50 (under 40x lens).