

For Research Use Only

# POLR1D Polyclonal antibody

Catalog Number: 12254-1-AP



## Basic Information

**Catalog Number:**

12254-1-AP

**Size:**

150UL, Concentration: 650 µg/ml by Nanodrop and 320 µg/ml by Bradford method using BSA as the standard;

**Source:**

Rabbit

**Isotype:**

IgG

**Immunogen Catalog Number:**

AG2904

**GenBank Accession Number:**

BC015319

**GeneID (NCBI):**

51082

**Full Name:**

polymerase (RNA) I polypeptide D, 16kDa

**Calculated MW:**

16 kDa

**Observed MW:**

20 kDa

**Purification Method:**

Antigen affinity purification

**Recommended Dilutions:**

WB 1:500-1:2000

IP 0.5-4.0 ug for IP and 1:500-1:1000 for WB

## Applications

**Tested Applications:**

IP, WB, ELISA

**Species Specificity:**

human, mouse, rat

**Positive Controls:**

WB : HeLa cells, Jurkat cells, mouse lung tissue

IP : HeLa cells,

## Background Information

### Storage

**Storage:**

Store at -20°C. Stable for one year after shipment.

**Storage Buffer:**

PBS with 0.02% sodium azide and 50% glycerol pH 7.3.

Aliquoting is unnecessary for -20°C storage

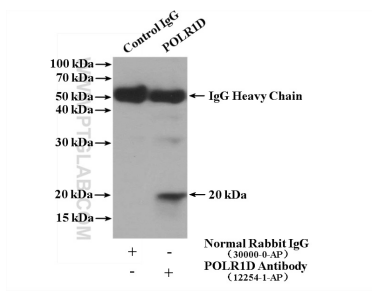
For technical support and original validation data for this product please contact:

T: 1 (888) 4PTGLAB (1-888-478-4522) (toll free in USA), or 1(312) 455-8498 (outside USA)

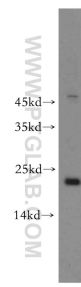
E: [proteintech@ptglab.com](mailto:proteintech@ptglab.com)  
W: [ptglab.com](http://ptglab.com)

This product is exclusively available under Proteintech Group brand and is not available to purchase from any other manufacturer.

## Selected Validation Data



IP result of anti-POLR1D (IP:12254-1-AP, 4 $\mu$ g;  
Detection:12254-1-AP 1:500) with HeLa cells lysate  
2600  $\mu$ g.



HeLa cells were subjected to SDS PAGE followed by  
western blot with 12254-1-AP (POLR1D antibody) at  
dilution of 1:500 incubated at room temperature for  
1.5 hours.