

For Research Use Only

SULF2 Polyclonal antibody

Catalog Number: 12260-1-AP 1 Publications



Basic Information

Catalog Number: 12260-1-AP	GenBank Accession Number: BC020962	Purification Method: Antigen affinity purification
Size: 150UL, Concentration: 300 µg/ml by Nanodrop and 260 µg/ml by Bradford method using BSA as the standard;	GeneID (NCBI): 55959	Recommended Dilutions: WB 1:500-1:1000 IHC 1:20-1:200
Source: Rabbit	Full Name: sulfatase 2	
Isotype: IgG	Calculated MW: 870 aa, 96 kDa	
Immunogen Catalog Number: AG2915	Observed MW: 130-150 kDa	

Applications

Tested Applications: IHC, WB, ELISA	Positive Controls: WB : mouse liver tissue, IHC : human breast cancer tissue, human ovary tissue
Species Specificity: human, mouse, rat	
Cited Species: mouse	
Note-IHC: suggested antigen retrieval with TE buffer pH 9.0; (*) Alternatively, antigen retrieval may be performed with citrate buffer pH 6.0	

Background Information

SULF2, also named as KIAA1247, belongs to the sulfatase family. It exhibits arylsulfatase activity and highly specific endoglucosamine-6-sulfatase activity. SULF2 can remove sulfate from the C-6 position of glucosamine within specific subregions of intact heparin. SULF2 has several forms: the unglycosylated 100 kDa SULF2, the glycosylated 120-150 kDa SULF2, the cleaved 72-75 kDa and 50 kDa SULF2.

Notable Publications

Author	Pubmed ID	Journal	Application
Hironori Bando	31189656	J Exp Med	

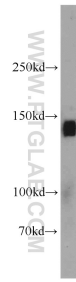
Storage

Storage:
Store at -20°C. Stable for one year after shipment.
Storage Buffer:
PBS with 0.02% sodium azide and 50% glycerol pH 7.3.
Aliquoting is unnecessary for -20°C storage

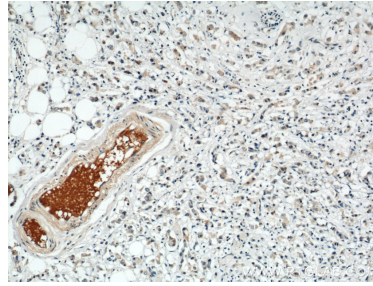
For technical support and original validation data for this product please contact:
T: 1 (888) 4PTGLAB (1-888-478-4522) (toll free in USA), or 1(312) 455-8498 (outside USA)
E: proteintech@ptglab.com
W: ptglab.com

This product is exclusively available under Proteintech Group brand and is not available to purchase from any other manufacturer.

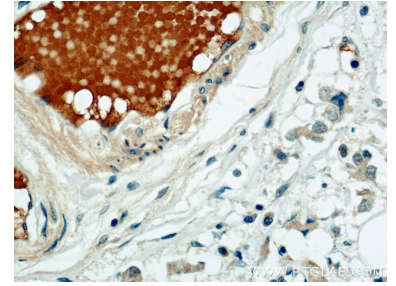
Selected Validation Data



mouse liver tissue were subjected to SDS PAGE followed by western blot with 12260-1-AP (SULF2 antibody) at dilution of 1:500 incubated at room temperature for 1.5 hours.



Immunohistochemical analysis of paraffin-embedded human breast cancer using 12260-1-AP (SULF2 antibody) at dilution of 1:50 (under 10x lens).



Immunohistochemical analysis of paraffin-embedded human breast cancer using 12260-1-AP (SULF2 antibody) at dilution of 1:50 (under 40x lens).