

ETFA Polyclonal ANTIBODY

Catalog Number: 12262-1-AP

3 Publications

Basic Information

Catalog Number:
12262-1-AP

Size:
29 µg/150 µl

Source:
Rabbit

Isotype:
IgG

Purification Method:
Antigen affinity purification

Immunogen Catalog Number:
AG2931

GenBank Accession Number:
BC015526

GeneID (NCBI):
2108

Full Name:
electron-transfer-flavoprotein, alpha polypeptide

Calculated MW:
30 kDa

Observed MW:
30 kDa

Recommended Dilutions:

WB 1:1000-1:3000

IHC 1:20-1:200

IF 1:10-1:100

Applications

Tested Applications:

FC, IF, IHC, WB, ELISA

Cited Applications:

WB

Species Specificity:

human,mouse,rat

Cited Species:

human

Note: suggested antigen retrieval with TE buffer pH 9.0; (*) Alternatively, antigen retrieval may be performed with citrate buffer pH 6.0

Positive Controls:

WB : Y79 cells; human ileum tissue, mouse small intestine tissue, rat small intestine tissue

IHC : human breast cancer tissue;

IF : MCF-7 cells;

Background Information

Electron transfer flavoprotein (ETF) exists in the mitochondrial matrix as a heterodimer of 30 kD alpha subunits (ETFA) and 28 kD beta subunits (ETFB) and contains 1 flavin adenine dinucleotide (FAD) and 1 adenosine 5-prime monophosphate (AMP) per heterodimer. ETFA serves as a specific electron acceptor for several dehydrogenases, including five acyl-CoA dehydrogenases, glutaryl-CoA and sarcosine dehydrogenase.

Notable Publications

Author	Pubmed ID	Journal	Application
Singaravelu Ragunath R	20181094	Proteome Sci	WB
Mito Taika T	21385629	J Proteomics	WB
Han Bingnan B	20515076	J Proteome Res	WB

Storage

Storage:

Store at -20°C. Stable for one year after shipment.

Storage Buffer:

PBS with 0.1% sodium azide and 50% glycerol pH 7.3.

Aliquoting is unnecessary for -20°C storage

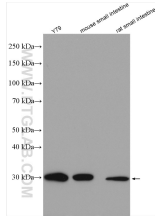
For technical support and original validation data for this product please contact:

T: 1 (888) 4PTGLAB (1-888-478-4522) (toll free in USA), or 1(312) 455-8498 (outside USA)

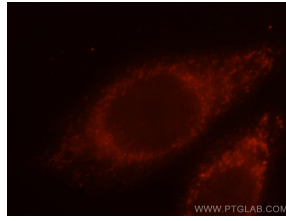
E: proteintech@ptglab.com
W: ptglab.com

This product is exclusively available under Proteintech Group brand and is not available to purchase from any other manufacturer.

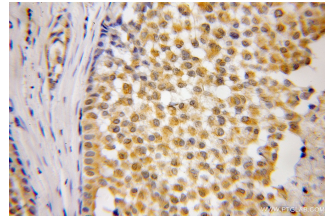
Selected Validation Data



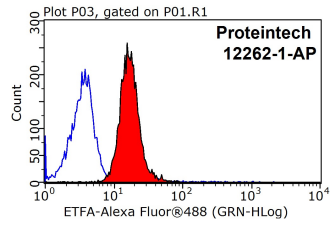
Various lysates were subjected to SDS PAGE followed by western blot with 12262-1-AP (ETFA antibody) at dilution of 1:2000 incubated at room temperature for 1.5 hours



Immunofluorescent analysis of MCF-7 cells, using PNRC2 antibody 12262-1-AP at 1:25 dilution and Rhodamine-labeled goat anti-rabbit IgG (red).



Immunohistochemical analysis of paraffin-embedded human breast cancer using 12262-1-AP(ETFA antibody) at dilution of 1:50 (under 40x lens)



1X10⁶ MCF-7 cells were stained with 0.2ug ETFA antibody (12262-1-AP, red) and control antibody (blue). Fixed with 90% MeOH blocked with 3% BSA (30 min). Alexa Fluor 488-conjugated AffiniPure Goat Anti-Rabbit IgG(H+L) with dilution 1:1500.