

For Research Use Only

# SSSCA1 Polyclonal antibody

Catalog Number: 12273-1-AP



## Basic Information

Catalog Number:  
12273-1-AP

Size:  
150ul, Concentration: 267 µg/ml by  
Bradford method using BSA as the  
standard;

Source:  
Rabbit

Isotype:  
IgG

Immunogen Catalog Number:  
AG2916

GenBank Accession Number:  
BC014791

GeneID (NCBI):  
10534

Full Name:  
Sjogren syndrome/scleroderma  
autoantigen 1

Calculated MW:  
199 aa, 21 kDa

Observed MW:  
27 kDa

Purification Method:

Antigen affinity purification

Recommended Dilutions:

WB 1:500-1:1000  
IP 0.5-4.0 ug for IP and 1:500-1:2000  
for WB  
IHC 1:50-1:500  
IF 1:10-1:100

## Applications

Tested Applications:

FC, IF, IHC, IP, WB, ELISA

Species Specificity:

human, mouse, rat

**Note-IHC: suggested antigen retrieval with  
TE buffer pH 9.0; (\*) Alternatively, antigen  
retrieval may be performed with citrate  
buffer pH 6.0**

Positive Controls:

WB : HeLa cells, A549 cells, NIH/3T3 cells

IP : HeLa cells,

IHC : mouse testis tissue,

IF : HeLa cells,

## Background Information

SSSCA1, also named as Autoantigen p27, is centromere-associated protein. It may induce anti-centromere antibodies. SSSCA1 plays a role in mitosis. It's involved in Sjogren syndrome/scleroderma. The calculated MW of SSSCA1 is 21.5 kDa (native form), with modification the MW is about 27 kDa.

## Storage

Storage:

Store at -20°C. Stable for one year after shipment.

Storage Buffer:

PBS with 0.02% sodium azide and 50% glycerol pH 7.3.

Aliquoting is unnecessary for -20°C storage

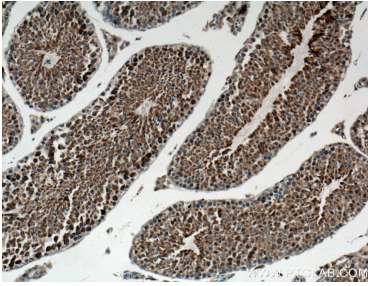
For technical support and original validation data for this product please contact:

T: 1 (888) 4PTGLAB (1-888-478-4522) (toll free  
in USA), or 1(312) 455-8498 (outside USA)

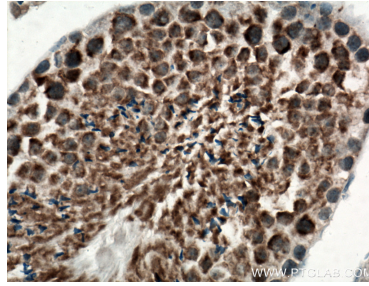
E: proteintech@ptglab.com  
W: ptglab.com

**This product is exclusively available under Proteintech  
Group brand and is not available to purchase from any  
other manufacturer.**

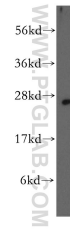
## Selected Validation Data



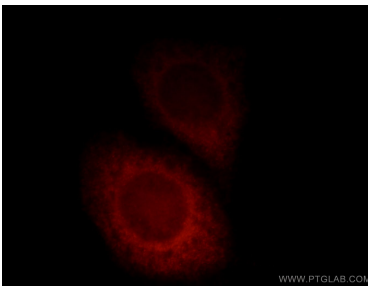
Immunohistochemical analysis of paraffin-embedded mouse testis tissue slide using 12273-1-AP (SSSCA1 antibody) at dilution of 1:100 (under 10x lens). Heat mediated antigen retrieval with Tris-EDTA buffer (pH 9.0).



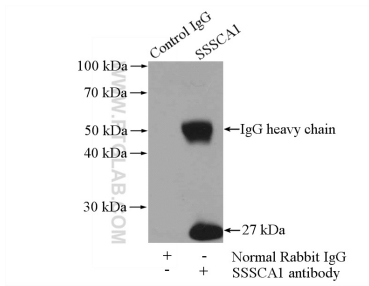
Immunohistochemical analysis of paraffin-embedded mouse testis tissue slide using 12273-1-AP (SSSCA1 antibody) at dilution of 1:100 (under 40x lens). Heat mediated antigen retrieval with Tris-EDTA buffer (pH 9.0).



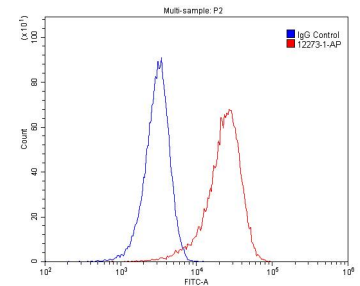
HeLa cells were subjected to SDS PAGE followed by western blot with 12273-1-AP (SSSCA1 antibody) at dilution of 1:500 incubated at room temperature for 1.5 hours.



Immunofluorescent analysis of HeLa cells, using SSSCA1 antibody 12273-1-AP at 1:25 dilution and Rhodamine-labeled goat anti-rabbit IgG (red).



IP Result of anti-SSSCA1 (IP:12273-1-AP, 4ug; Detection:12273-1-AP 1:1000) with HeLa cells lysate 2000ug.



$1 \times 10^6$  HeLa cells were stained with 0.2 ug SSSCA1 antibody (12273-1-AP) and CoraLite488-Conjugated AffiniPure Goat Anti-Rabbit IgG(H+L) at dilution 1:1500 (red), or stained with 0.2 ug isotype control and CoraLite488-Conjugated AffiniPure Goat Anti-Rabbit IgG(H+L) at dilution 1:1500 (blue). Cells were fixed with 4% PFA and permeabilized with 0.1% Triton X-100.