

For Research Use Only

AGR2 Polyclonal antibody

Catalog Number: 12275-1-AP

Featured Product

22 Publications



Basic Information

Catalog Number:

12275-1-AP

Size:

150ul, Concentration: 800 ug/ml by Nanodrop;

Source:

Rabbit

Isotype:

IgG

Immunogen Catalog Number:

AG2919

GenBank Accession Number:

BC015503

GeneID (NCBI):

10551

UNIPROT ID:

O95994

Full Name:

anterior gradient homolog 2 (Xenopus laevis)

Calculated MW:

175 aa, 20 kDa

Observed MW:

17-20 kDa

Purification Method:

Antigen affinity purification

Recommended Dilutions:

WB: 1:500-1:2000

IP: 0.5-4.0 ug for 1.0-3.0 mg of total protein lysate

IHC: 1:50-1:500

IF/ICC: 1:50-1:500

FC (Intra): 0.40 ug per 10⁶ cells in a 100 µl suspension

Applications

Tested Applications:

WB, IHC, IF/ICC, FC (Intra), IP, ELISA

Cited Applications:

WB, IHC, IF, IP

Species Specificity:

human, mouse, rat

Cited Species:

human, mouse, rat

Note-IHC: suggested antigen retrieval with TE buffer pH 9.0; (*) Alternatively, antigen retrieval may be performed with citrate buffer pH 6.0

Positive Controls:

WB: A549 cells, rat colon tissue, rat stomach tissue, mouse stomach tissue

IP: A549 cells,

IHC: human breast cancer tissue, human colon tissue

IF/ICC: A549 cells,

FC (Intra): A549 cells,

Background Information

AGR2, also named AG2 or HPC8, encodes anterior gradient protein 2 homolog which belongs to the AGR family. It is a secreted protein localized in endoplasmic reticulum. AGR2 plays roles in MUC2 post-transcriptional synthesis, secretion and production of mucus by intestinal cells. AGR2 was significantly elevated in the pancreatic juice from patients with pre-malignant conditions as well as pancreatic cancer compared to control pancreatic juice samples. AGR2 levels in pancreatic juice could potentially be used in assessment of high-risk patients undergoing endoscopic procedures.

Notable Publications

Author	Pubmed ID	Journal	Application
Michael Herfs	24076771	Am J Surg Pathol	IHC
Ayumi Kanno	30290061	J Diabetes Investig	IF
Michael Herfs	24839092	Int J Cancer	IHC

Storage

Storage:

Store at -20°C. Stable for one year after shipment.

Storage Buffer:

PBS with 0.02% sodium azide and 50% glycerol, pH7.3

Aliquoting is unnecessary for -20°C storage

*** 20ul sizes contain 0.1% BSA

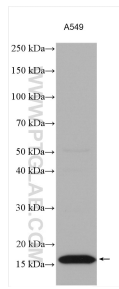
For technical support and original validation data for this product please contact:

T: 1 (888) 4PTGLAB (1-888-478-4522) (toll free in USA), or 1(312) 455-8498 (outside USA)

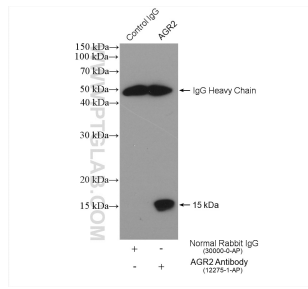
E: proteintech@ptglab.com
W: ptglab.com

This product is exclusively available under Proteintech Group brand and is not available to purchase from any other manufacturer.

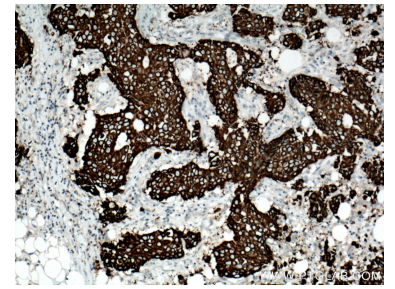
Selected Validation Data



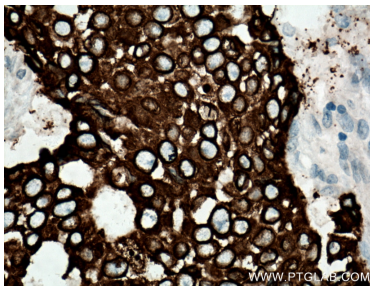
Various lysates were subjected to SDS PAGE followed by western blot with 12275-1-AP (AGR2 antibody) at dilution of 1:1000 incubated at room temperature for 1.5 hours.



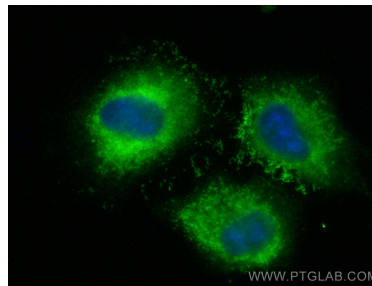
IP result of anti-AGR2 (IP:12275-1-AP, 4ug; Detection:12275-1-AP 1:1000) with A549 cells lysate 1200 ug.



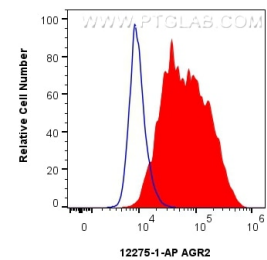
Immunohistochemical analysis of paraffin-embedded human breast cancer tissue slide using 12275-1-AP (AGR2 antibody) at dilution of 1:200 (under 10x lens. Heat mediated antigen retrieval with Tris-EDTA buffer (pH 9.0).



Immunohistochemical analysis of paraffin-embedded human breast cancer tissue slide using 12275-1-AP (AGR2 antibody) at dilution of 1:200 (under 40x lens. Heat mediated antigen retrieval with Tris-EDTA buffer (pH 9.0).



Immunofluorescent analysis of (-20°C Methanol) fixed A549 cells using AGR2 antibody (12275-1-AP) at dilution of 1:200 and CoraLite®488-Conjugated AffiniPure Goat Anti-Rabbit IgG(H+L) (SA00013-2).



1x10⁶ A549 cells were intracellularly stained with 0.4 ug AGR2 Polyclonal antibody (12275-1-AP) and CoraLite®488-Conjugated Goat Anti-Rabbit IgG(H+L) (SA00013-2)(red), or 0.4 ug Rabbit IgG control Rabbit PolyAb (30000-O-AP) (blue). Cells were fixed with 4% PFA and permeabilized with Flow Cytometry Perm Buffer (PF00011-C).