

For Research Use Only

# FIP1L1 Polyclonal antibody

Catalog Number: 12276-1-AP



## Basic Information

<b>Catalog Number:</b> 12276-1-AP	<b>GenBank Accession Number:</b> BC017724	<b>Purification Method:</b> Antigen affinity purification
<b>Size:</b> 150UL, Concentration: 650 µg/ml by Nanodrop and 240 µg/ml by Bradford method using BSA as the standard;	<b>GeneID (NCBI):</b> 81608	<b>Recommended Dilutions:</b> WB 1:500-1:1000 IHC 1:20-1:200 IF 1:10-1:100
<b>Source:</b> Rabbit	<b>Full Name:</b> FIP1 like 1 ( <i>S. cerevisiae</i> )	
<b>Isotype:</b> IgG	<b>Calculated MW:</b> 594 aa, 66 kDa	
<b>Immunogen Catalog Number:</b> AG2921	<b>Observed MW:</b> 67 kDa	

## Applications

<b>Tested Applications:</b> IF, IHC, WB, ELISA	<b>Positive Controls:</b> WB : K-562 cells, IHC : human ovary tumor tissue, IF : MCF-7 cells,
<b>Species Specificity:</b> human, mouse, rat	
<b>Note-IHC: suggested antigen retrieval with TE buffer pH 9.0; (*) Alternatively, antigen retrieval may be performed with citrate buffer pH 6.0</b>	

## Background Information

### Storage

**Storage:**  
Store at -20°C. Stable for one year after shipment.  
**Storage Buffer:**  
PBS with 0.02% sodium azide and 50% glycerol pH 7.3.  
Aliquoting is unnecessary for -20°C storage

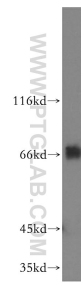
For technical support and original validation data for this product please contact:

T: 1 (888) 4PTGLAB (1-888-478-4522) (toll free in USA), or 1(312) 455-8498 (outside USA)

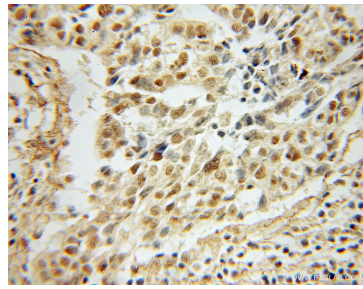
E: [proteintech@ptglab.com](mailto:proteintech@ptglab.com)  
W: [ptglab.com](http://ptglab.com)

This product is exclusively available under Proteintech Group brand and is not available to purchase from any other manufacturer.

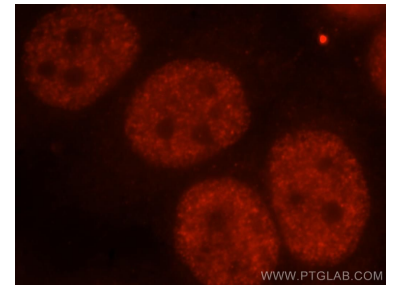
## Selected Validation Data



K-562 cells were subjected to SDS PAGE followed by western blot with 12276-1-AP (FIP1L1 antibody) at dilution of 1:300 incubated at room temperature for 1.5 hours.



Immunohistochemical analysis of paraffin-embedded human ovary tumor using 12276-1-AP (FIP1L1 antibody) at dilution of 1:50 (under 10x lens).



Immunofluorescent analysis of MCF-7 cells, using FIP1L1 antibody 12276-1-AP at 1:25 dilution and Rhodamine-labeled goat anti-rabbit IgG (red).