

For Research Use Only

LEO1 Polyclonal antibody

Catalog Number: 12281-1-AP

5 Publications



Basic Information

Catalog Number:

12281-1-AP

Size:

150ul, Concentration: 700 ug/ml by Nanodrop and 407 ug/ml by Bradford method using BSA as the standard;

Source:

Rabbit

Isotype:

IgG

Immunogen Catalog Number:

AG2932

GenBank Accession Number:

BC018147

GeneID (NCBI):

123169

UNIPROT ID:

Q8WVC0

Full Name:

Leo1, Paf1/RNA polymerase II complex component, homolog (S. cerevisiae)

Calculated MW:

666 aa, 75 kDa

Observed MW:

105 kDa

Purification Method:

Antigen affinity purification

Recommended Dilutions:

WB 1:500-1:2400

IHC 1:50-1:500

IF/ICC 1:200-1:800

Applications

Tested Applications:

WB, IHC, IF/ICC, ELISA

Cited Applications:

WB, IP

Species Specificity:

human, mouse, rat

Cited Species:

human, mouse

Note-IHC: suggested antigen retrieval with TE buffer pH 9.0; (*) Alternatively, antigen retrieval may be performed with citrate buffer pH 6.0

Positive Controls:

WB : mouse heart tissue, HeLa cells, HL-60 cells, human placenta tissue, Jurkat cells, mouse brain tissue, mouse skeletal muscle tissue

IHC : human colon tissue,

IF/ICC : U-251 cells,

Background Information

LEO1, also named as RNA polymerase-associated protein LEO1, is a 666 amino acid protein, which belongs to the LEO1 family. LEO1 is a component of the PAF1 complex (PAF1C) which has multiple functions during transcription by RNA polymerase II and is implicated in regulation of development and maintenance of embryonic stem cell pluripotency. The calculated molecular weight of LEO1 is 75 kDa, but the modified LEO1 protein is about 105 kDa (PMID: 15632063).

Notable Publications

Author	Pubmed ID	Journal	Application
Lindsey D Goodman	31110321	Nat Neurosci	WB
Gang Xiang	35551175	Cell Death Dis	WB
Negin Khosraviani	39505901	Nat Commun	WB

Storage

Storage:

Store at -20°C. Stable for one year after shipment.

Storage Buffer:

PBS with 0.02% sodium azide and 50% glycerol, pH7.3

Aliquoting is unnecessary for -20°C storage

*** 20ul sizes contain 0.1% BSA

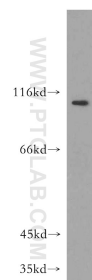
For technical support and original validation data for this product please contact:

T: 1 (888) 4PTGLAB (1-888-478-4522) (toll free in USA), or 1(312) 455-8498 (outside USA)

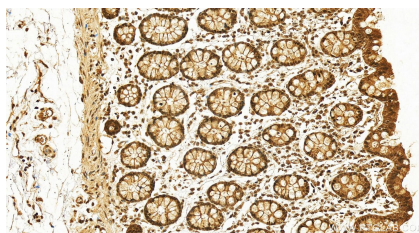
E: proteintech@ptglab.com
W: ptglab.com

This product is exclusively available under Proteintech Group brand and is not available to purchase from any other manufacturer.

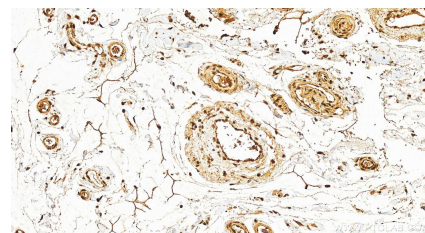
Selected Validation Data



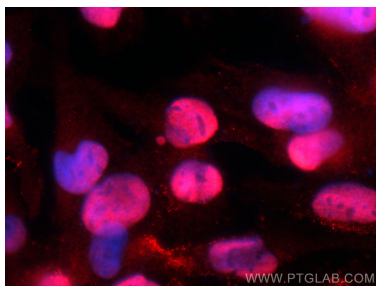
mouse heart tissue were subjected to SDS PAGE followed by western blot with 12281-1-AP (LEO1 antibody) at dilution of 1:500 incubated at room temperature for 1.5 hours.



Immunohistochemical analysis of paraffin-embedded human normal colon slide using 12281-1-AP (LEO1 antibody) at dilution of 1:200 (under 20x lens). Heat mediated antigen retrieval with Tris-EDTA buffer (pH 9.0).



Immunohistochemical analysis of paraffin-embedded human normal colon slide using 12281-1-AP (LEO1 antibody) at dilution of 1:200 (under 20x lens). Heat mediated antigen retrieval with Tris-EDTA buffer (pH 9.0).



Immunofluorescent analysis of (4% PFA) fixed U-251 cells using LEO1 antibody (12281-1-AP) at dilution of 1:400 and CoraLite®594-Conjugated Goat Anti-Rabbit IgG(H+L) (SA00013-4).