

For Research Use Only

RAB3D Polyclonal antibody

Catalog Number: 12320-1-AP

Featured Product

10 Publications



Basic Information

Catalog Number:

12320-1-AP

Size:

150UL, Concentration: 487 µg/ml by Bradford method using BSA as the standard;

Source:

Rabbit

Isotype:

IgG

Immunogen Catalog Number:

AG2973

GenBank Accession Number:

BC016471

GeneID (NCBI):

9545

Full Name:

RAB3D, member RAS oncogene family

Calculated MW:

219 aa, 24 kDa

Observed MW:

28 kDa

Purification Method:

Antigen affinity purification

Recommended Dilutions:

WB 1:500-1:2400

IP 0.5-4.0 µg for IP and 1:500-1:1000

for WB

IHC 1:400-1:1000

Applications

Tested Applications:

IHC, IP, WB, ELISA

Cited Applications:

IF, IHC, WB

Species Specificity:

human, mouse, rat

Cited Species:

canine, goat, human, mouse, rat, swine

Note-IHC: suggested antigen retrieval with TE buffer pH 9.0; (*) Alternatively, antigen retrieval may be performed with citrate buffer pH 6.0

Positive Controls:

WB: mouse lung tissue, A549 cells, human cerebellum tissue, human stomach tissue, mouse spleen tissue, mouse stomach tissue, SW 1990 cells

IP: SW 1990 cells,

IHC: human prostate cancer tissue, human breast cancer tissue

Background Information

Rab3D is a member of the Rab3 subfamily, which comprises four isoforms (Rab3A, Rab3B, Rab3C, and Rab3D). Rab3 proteins typically associate with secretory vesicles, including synaptic vesicles, and have been implicated in the control of regulated exocytosis. Rab3D is widely expressed in adipocytes, exocrine glands and several haematopoietic cells, where it localizes to secretory granules and vesicles.

Notable Publications

Author	Pubmed ID	Journal	Application
Mizuka Kamoi	22962587	PLoS One	IHC
Hiroshi Gomi	28914590	J Histochem Cytochem	WB,IHC
Victoria G Weis	25190476	Am J Physiol Gastrointest Liver Physiol	IF

Storage

Storage:

Store at -20°C. Stable for one year after shipment.

Storage Buffer:

PBS with 0.1% sodium azide and 50% glycerol pH 7.3.

Aliquoting is unnecessary for -20°C storage

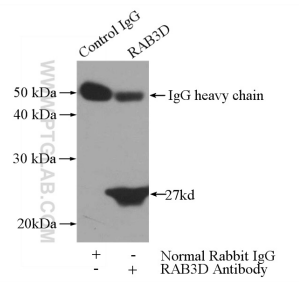
For technical support and original validation data for this product please contact:

T: 1 (888) 4PTGLAB (1-888-478-4522) (toll free in USA), or 1(312) 455-8498 (outside USA)

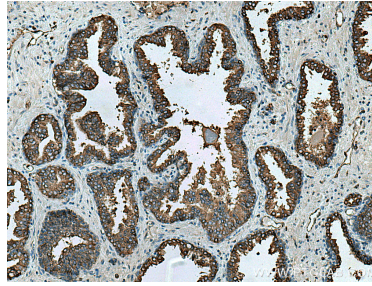
E: proteintech@ptglab.com
W: ptglab.com

This product is exclusively available under Proteintech Group brand and is not available to purchase from any other manufacturer.

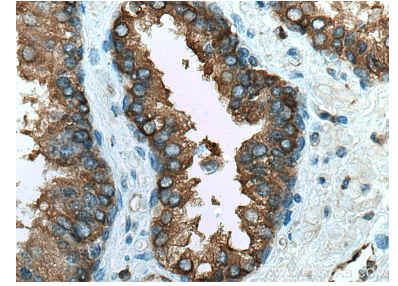
Selected Validation Data



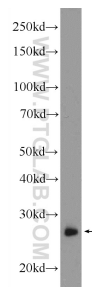
IP Result of anti-RAB3D (IP:12320-1-AP, 3ug; Detection:12320-1-AP 1:600) with SW 1990 cells lysate 2400ug.



Immunohistochemical analysis of paraffin-embedded human prostate cancer tissue slide using 12320-1-AP (RAB3D antibody) at dilution of 1:800 (under 10x lens). Heat mediated antigen retrieval with Tris-EDTA buffer (pH 9.0).



Immunohistochemical analysis of paraffin-embedded human prostate cancer tissue slide using 12320-1-AP (RAB3D antibody) at dilution of 1:800 (under 40x lens). Heat mediated antigen retrieval with Tris-EDTA buffer (pH 9.0).



mouse lung tissue were subjected to SDS PAGE followed by western blot with 12320-1-AP (RAB3D Antibody) at dilution of 1:1200 incubated at room temperature for 1.5 hours.