

For Research Use Only

LIMK2 Polyclonal antibody

Catalog Number: 12350-1-AP **4 Publications**



Basic Information

Catalog Number: 12350-1-AP	GenBank Accession Number: BC013051	Purification Method: Antigen affinity purification
Size: 150ul , Concentration: 247 µg/ml by Bradford method using BSA as the standard;	GeneID (NCBI): 3985	Recommended Dilutions: WB 1:500-1:1000
Source: Rabbit	Full Name: LIM domain kinase 2	
Isotype: IgG	Calculated MW: 686 aa, 78 kDa	
Immunogen Catalog Number: AG3011	Observed MW: 70-80 kDa	

Applications

Tested Applications: WB,ELISA	Positive Controls: WB : NIH/3T3 cells,
Cited Applications: IHC, WB	
Species Specificity: human, mouse, rat	
Cited Species: human, mouse	

Background Information

The family of LIM kinase (LIMK) includes two similar proteins, LIMK1 and LIMK2, that share overall identity of 53% with 75%, 55%, and 42% amino acid identity in the LIM, kinase, and PDZ domains, respectively. LIMK2 regulates actin cytoskeletal reorganization through phosphorylating and inactivating cofilin, an actin-depolymerizing factor of actin filaments. It also may associate with gamma-tubulin and play a role in mitotic spindle assembly. High levels of LIMK2 are evident in uterus, thymus, and spleen whereas lower levels are observed in brain, heart, liver, stomach, skeletal muscle, and testes according to the results of western blotting(PMID:16399995). It has 3 isoforms produced by alternative splicing of the molecular weight of 70-78 kDa. It can be detected a band of 47 kDa or 50-55 kDa in the testes because the antibody is recognizing the testis-specific variant of LIMK2 and the this difference could be due to species variation(PMID:17928627).

Notable Publications

Author	Pubmed ID	Journal	Application
Ming Xiong	31695759	Theranostics	IHC
Moyuan Deng	32424991	Adv Healthc Mater	WB
Yue Zhang	29970879	Cell Death Dis	WB,IHC

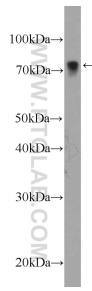
Storage

Storage:
Store at -20°C. Stable for one year after shipment.
Storage Buffer:
PBS with 0.02% sodium azide and 50% glycerol pH 7.3.
Aliquoting is unnecessary for -20°C storage

For technical support and original validation data for this product please contact:
T: 1 (888) 4PTGLAB (1-888-478-4522) (toll free in USA), or 1(312) 455-8498 (outside USA)
E: proteintech@ptglab.com
W: ptglab.com

This product is exclusively available under Proteintech Group brand and is not available to purchase from any other manufacturer.

Selected Validation Data



NIH/3T3 cells were subjected to SDS PAGE followed by western blot with 12350-1-AP (LIMK2 Antibody) at dilution of 1:600 incubated at 4 degree celsius over night.