

For Research Use Only

# SYTL2 Polyclonal antibody

Catalog Number: 12359-1-AP



## Basic Information

<b>Catalog Number:</b> 12359-1-AP	<b>GenBank Accession Number:</b> BC015540	<b>Purification Method:</b> Antigen affinity purification
<b>Size:</b> 150UL, Concentration: 900 µg/ml by Nanodrop and 407 µg/ml by Bradford method using BSA as the standard;	<b>GeneID (NCBI):</b> 54843	<b>Recommended Dilutions:</b> WB 1:500-1:1000 IHC 1:20-1:200
<b>Source:</b> Rabbit	<b>Full Name:</b> synaptotagmin-like 2	
<b>Isotype:</b> IgG	<b>Calculated MW:</b> 934 aa, 105 kDa	
<b>Immunogen Catalog Number:</b> AG3023	<b>Observed MW:</b> 100-105 kDa	

## Applications

<b>Tested Applications:</b> IHC, WB, ELISA	<b>Positive Controls:</b> WB : Jurkat cells, IHC : human breast cancer tissue,
<b>Species Specificity:</b> human, mouse, rat	
<b>Note-IHC: suggested antigen retrieval with TE buffer pH 9.0; (*) Alternatively, antigen retrieval may be performed with citrate buffer pH 6.0</b>	

## Background Information

### Storage

**Storage:**  
Store at -20°C. Stable for one year after shipment.  
**Storage Buffer:**  
PBS with 0.02% sodium azide and 50% glycerol pH 7.3.  
Aliquoting is unnecessary for -20°C storage

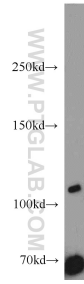
For technical support and original validation data for this product please contact:

T: 1 (888) 4PTGLAB (1-888-478-4522) (toll free in USA), or 1(312) 455-8498 (outside USA)

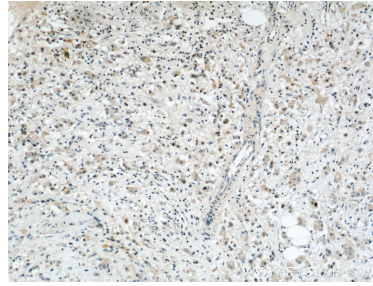
E: proteintech@ptglab.com  
W: ptglab.com

This product is exclusively available under Proteintech Group brand and is not available to purchase from any other manufacturer.

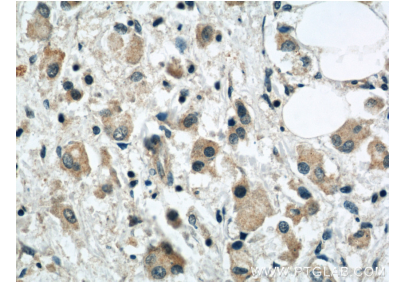
## Selected Validation Data



Jurkat cells were subjected to SDS PAGE followed by western blot with 12359-1-AP (SYTL2 antibody) at dilution of 1:500 incubated at room temperature for 1.5 hours.



Immunohistochemical analysis of paraffin-embedded human breast cancer using 12359-1-AP (SYTL2 antibody) at dilution of 1:50 (under 10x lens).



Immunohistochemical analysis of paraffin-embedded human breast cancer using 12359-1-AP (SYTL2 antibody) at dilution of 1:50 (under 40x lens).