

For Research Use Only

# PINX1 Polyclonal antibody

Catalog Number: 12368-1-AP

Featured Product

10 Publications



## Basic Information

Catalog Number:

12368-1-AP

Size:

150ul, Concentration: 540 ug/ml by Nanodrop;

Source:

Rabbit

Isotype:

IgG

Immunogen Catalog Number:

AG3043

GenBank Accession Number:

BC015479

GeneID (NCBI):

54984

UNIPROT ID:

Q96BK5

Full Name:

PIN2-interacting protein 1

Calculated MW:

328 aa, 37 kDa

Observed MW:

40 kDa

Purification Method:

Antigen affinity purification

Recommended Dilutions:

WB 1:2000-1:12000

IF/ICC 1:50-1:500

## Applications

Tested Applications:

WB, IF/ICC, ELISA

Cited Applications:

WB, IHC

Species Specificity:

human, mouse, rat

Cited Species:

human

Positive Controls:

WB : Jurkat cells, A431 cells, C6 cells, NIH/3T3 cells, HeLa cells

IF/ICC : HeLa cells,

## Background Information

PINX1, also named as LPTL, LPTS and Protein 67-11-3, is a Liver-related putative tumor suppressor. It belongs to the PINX1 family. PINX1 is a microtubule-binding protein essential for faithful chromosome segregation. It mediates TRF1 and TERT accumulation in nucleolus and enhances TRF1 binding to telomeres. PINX1 inhibits telomerase activity. It may inhibit cell proliferation and act as tumor suppressor. PINX1 has been identified as a critical telomerase inhibitor and proposed to be a putative tumor suppressor gene. Loss of PinX1 has been found in a large variety of malignancies, but the expression status in epithelial ovarian tumors has not been investigated.

## Notable Publications

Author	Pubmed ID	Journal	Application
JiHoon Kang	34873474	Am J Cancer Res	WB,IHC
Xiao-Peng Tian	25045845	Cancer Lett	WB,IHC
JiHoon Kang	30026037	Hum Pathol	IHC

## Storage

Storage:

Store at -20°C. Stable for one year after shipment.

Storage Buffer:

PBS with 0.02% sodium azide and 50% glycerol pH 7.3.

Aliquoting is unnecessary for -20°C storage

\*\*\* 20ul sizes contain 0.1% BSA

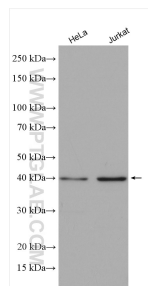
For technical support and original validation data for this product please contact:

T: 1 (888) 4PTGLAB (1-888-478-4522) (toll free in USA), or 1(312) 455-8498 (outside USA)

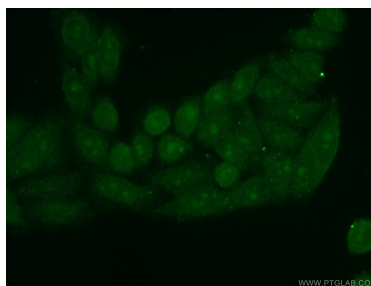
E: [proteintech@ptglab.com](mailto:proteintech@ptglab.com)  
W: [ptglab.com](http://ptglab.com)

This product is exclusively available under Proteintech Group brand and is not available to purchase from any other manufacturer.

## Selected Validation Data



Various lysates were subjected to SDS PAGE followed by western blot with 12368-1-AP (PINX1 antibody) at dilution of 1:6000 incubated at room temperature for 1.5 hours.



Immunofluorescent analysis of (10% Formaldehyde) fixed HeLa cells using 12368-1-AP (PINX1 antibody) at dilution of 1:50 and Alexa Fluor 488-conjugated Goat Anti-Rabbit IgG(H+L).