

For Research Use Only

TALDO1 Polyclonal antibody

Catalog Number: 12376-1-AP

Featured Product

7 Publications



Basic Information

Catalog Number:

12376-1-AP

Size:

150ul, Concentration: 400 ug/ml by Nanodrop and 300 ug/ml by Bradford method using BSA as the standard;

Source:

Rabbit

Isotype:

IgG

Immunogen Catalog Number:

AG3031

GenBank Accession Number:

BC009680

GeneID (NCBI):

6888

UNIPROT ID:

P37837

Full Name:

transaldolase 1

Calculated MW:

337 aa, 38 kDa

Observed MW:

38 kDa

Purification Method:

Antigen affinity purification

Recommended Dilutions:

WB: 1:1000-1:4000

IP: 0.5-4.0 ug for 1.0-3.0 mg of total protein lysate

IHC: 1:200-1:800

Applications

Tested Applications:

WB, IHC, IP, ELISA

Cited Applications:

WB

Species Specificity:

human, mouse, rat

Cited Species:

human

Note-IHC: suggested antigen retrieval with TE buffer pH 9.0; (*) Alternatively, antigen retrieval may be performed with citrate buffer pH 6.0

Positive Controls:

WB: A431 cells, HEK-293 cells, COLO 320 cells, HepG2 cells

IP: COLO 320 cells,

IHC: human colon tissue,

Background Information

TALDO1 belongs to the transaldolase family which contributes to the generation of NADPH in the nonoxidative phase of the pentose phosphate pathway (PPP). Defects in TALDO1 are the cause of transaldolase 1 deficiency which results in telangiectases of the skin, hepatosplenomegaly, and enlarged clitoris.

Notable Publications

Author	Pubmed ID	Journal	Application
Yi Ding	30323337	Nat Commun	WB
Yoichiro Mitsuishi	22789539	Cancer Cell	WB
Issam Ben-Sahra	26912861	Science	

Storage

Storage:

Store at -20°C. Stable for one year after shipment.

Storage Buffer:

PBS with 0.02% sodium azide and 50% glycerol, pH7.3

Aliquoting is unnecessary for -20°C storage

*** 20ul sizes contain 0.1% BSA

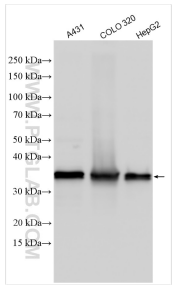
For technical support and original validation data for this product please contact:

T: 1 (888) 4PTGLAB (1-888-478-4522) (toll free in USA), or 1(312) 455-8498 (outside USA)

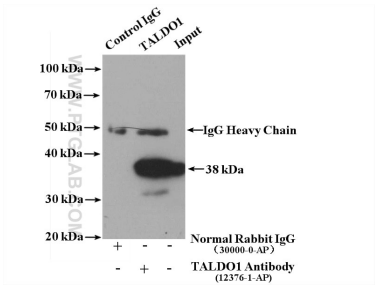
E: proteintech@ptglab.com
W: ptglab.com

This product is exclusively available under Proteintech Group brand and is not available to purchase from any other manufacturer.

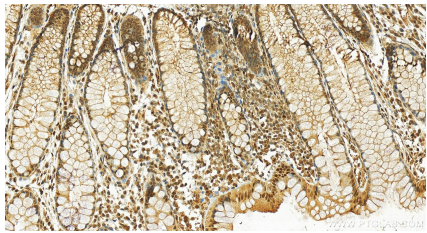
Selected Validation Data



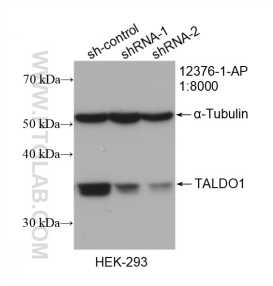
Various lysates were subjected to SDS PAGE followed by western blot with 12376-1-AP (TALDO1 antibody) at dilution of 1:2000 incubated at room temperature for 1.5 hours.



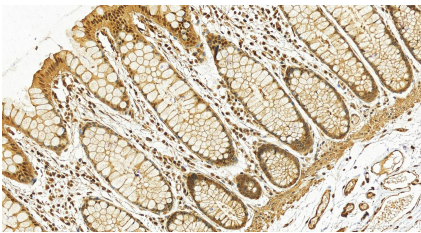
IP result of anti-TALDO1 (IP:12376-1-AP, 4ug; Detection:12376-1-AP 1:700) with COLO 320 cells lysate 3200 ug.



Immunohistochemical analysis of paraffin-embedded human normal colon slide using 12376-1-AP (TALDO1 antibody) at dilution of 1:400 (under 20x lens). Heat mediated antigen retrieval with Tris-EDTA buffer (pH 9.0).



WB result of TALDO1 antibody (12376-1-AP; 1:8000; incubated at room temperature for 1.5 hours) with sh-Control and sh-TALDO1 transfected HEK-293 cells.



Immunohistochemical analysis of paraffin-embedded human normal colon slide using 12376-1-AP (TALDO1 antibody) at dilution of 1:400 (under 20x lens). Heat mediated antigen retrieval with Tris-EDTA buffer (pH 9.0).