

For Research Use Only

MEF2A Polyclonal antibody

Catalog Number: 12382-1-AP **1 Publications**



Basic Information

Catalog Number:

12382-1-AP

Size:

150ul , Concentration: 750 µg/ml by Nanodrop and 247 µg/ml by Bradford method using BSA as the standard;

Source:

Rabbit

Isotype:

IgG

Immunogen Catalog Number:

AG3049

GenBank Accession Number:

BC013437

GeneID (NCBI):

4205

Full Name:

myocyte enhancer factor 2A

Calculated MW:

499 aa, 54 kDa

Observed MW:

54 kDa

Purification Method:

Antigen affinity purification

Recommended Dilutions:

WB 1:500-1:2000

Applications

Tested Applications:

WB, ELISA

Cited Applications:

WB

Species Specificity:

human, mouse, rat

Cited Species:

human

Positive Controls:

WB : mouse pancreas tissue,

Background Information

Notable Publications

Author	Pubmed ID	Journal	Application
Cuiting Zhao	33545365	Vascul Pharmacol	WB

Storage

Storage:

Store at -20°C. Stable for one year after shipment.

Storage Buffer:

PBS with 0.02% sodium azide and 50% glycerol pH 7.3.

Aliquoting is unnecessary for -20°C storage

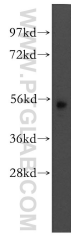
For technical support and original validation data for this product please contact:

T: 1 (888) 4PTGLAB (1-888-478-4522) (toll free in USA), or 1(312) 455-8498 (outside USA)

E: proteintech@ptglab.com
W: ptglab.com

This product is exclusively available under Proteintech Group brand and is not available to purchase from any other manufacturer.

Selected Validation Data



mouse pancreas tissue were subjected to SDS PAGE followed by western blot with 12382-1-AP (MEF2A antibody) at dilution of 1:400 incubated at room temperature for 1.5 hours.