

For Research Use Only

# A4GALT Polyclonal ANTIBODY

Catalog Number: 12392-1-AP



## Basic Information

**Catalog Number:**

12392-1-AP

**Size:**

150UL, Concentration: 200 µg/ml by Bradford method using BSA as the standard;

**Source:**

Rabbit

**Isotype:**

IgG

**Immunogen Catalog Number:**

AG3069

**GenBank Accession Number:**

BC017068

**GeneID (NCBI):**

53947

**Full Name:**

alpha 1,4-galactosyltransferase

**Calculated MW:**

353 aa, 41 kDa

**Observed MW:**

50-52 kDa

**Purification Method:**

Antigen affinity purification

**Recommended Dilutions:**

WB 1:500-1:2000

IHC 1:50-1:500

IF 1:50-1:500

## Applications

**Tested Applications:**

IF, IHC, WB, ELISA

**Species Specificity:**

human, mouse

**Note-IHC: suggested antigen retrieval with TE buffer pH 9.0; (\*) Alternatively, antigen retrieval may be performed with citrate buffer pH 6.0**

**Positive Controls:**

WB: RAW 264.7 cells, K-562 cells, Raji cells

IHC: human cervical cancer tissue, mouse kidney tissue

IF: MCF-7 cells,

## Background Information

### Storage

**Storage:**

Store at -20°C. Stable for one year after shipment.

**Storage Buffer:**

PBS with 0.1% sodium azide and 50% glycerol pH 7.3.

Aliquoting is unnecessary for -20°C storage

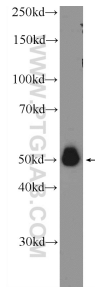
For technical support and original validation data for this product please contact:

T: 1 (888) 4PTGLAB (1-888-478-4522) (toll free in USA), or 1(312) 455-8498 (outside USA)

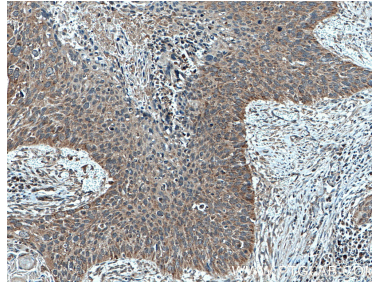
E: proteintech@ptglab.com  
W: ptglab.com

This product is exclusively available under Proteintech Group brand and is not available to purchase from any other manufacturer.

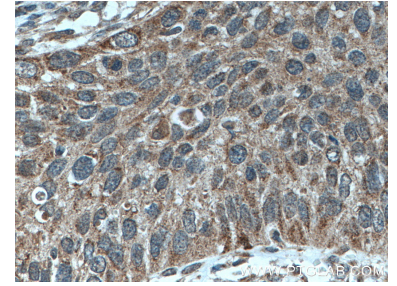
## Selected Validation Data



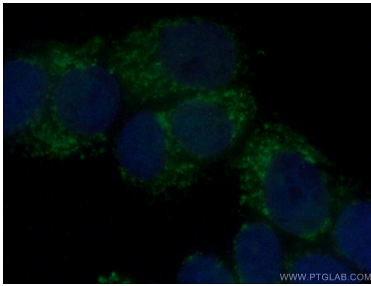
RAW 264.7 cells were subjected to SDS PAGE followed by western blot with 12392-1-AP (A4GALT Antibody) at dilution of 1:1000 incubated at room temperature for 1.5 hours.



Immunohistochemical analysis of paraffin-embedded human cervical cancer tissue slide using 12392-1-AP (A4GALT antibody) at dilution of 1:200 (under 10x lens. Heat mediated antigen retrieval with Tris-EDTA buffer (pH 9.0).



Immunohistochemical analysis of paraffin-embedded human cervical cancer tissue slide using 12392-1-AP (A4GALT antibody) at dilution of 1:200 (under 40x lens. Heat mediated antigen retrieval with Tris-EDTA buffer (pH 9.0).



Immunofluorescent analysis of (4% PFA) fixed MCF-7 cells using 12392-1-AP (A4GALT antibody) at dilution of 1:50 and Alexa Fluor 488-Conjugated AffiniPure Goat Anti-Rabbit IgG(H+L).