

For Research Use Only

COPG Polyclonal ANTIBODY



Catalog Number: 12393-1-AP

2 Publications

Basic Information

Catalog Number:
12393-1-AP

Size:
20 µg/150 µl

Source:
Rabbit

Isotype:
IgG

Purification Method:
Antigen affinity purification

Immunogen Catalog Number:
AG3070

GenBank Accession Number:
BC020498

GeneID (NCBI):
22820

Full Name:
coatamer protein complex, subunit gamma

Calculated MW:
874aa, 98 kDa

Observed MW:
98 kDa

Recommended Dilutions:

WB 1:1000-1:5000

IP 0.5-4.0 µg for IP and 1:1000-1:4000 for WB

IHC 1:20-1:200

IF 1:10-1:100

Applications

Tested Applications:
IF, IHC, IP, WB, ELISA

Cited Applications:
WB

Species Specificity:
human, mouse, rat

Cited Species:
mouse

Note: suggested antigen retrieval with TE buffer pH 9.0; (*) Alternatively, antigen retrieval may be performed with citrate buffer pH 6.0

Positive Controls:

WB : K-562 cells; A375 cells, HeLa cells, human brain tissue, human colon tissue, NIH/3T3 cells

IP : K-562 cells;

IHC : human breast cancer tissue;

IF : HepG2 cells; HeLa cells

Background Information

Notable Publications

Author	Pubmed ID	Journal	Application
Desiree M Baron	30806671	Hum Mol Genet	WB
Xiaoling Li	29475944	J Biol Chem	WB

Storage

Storage:

Store at -20°C. Stable for one year after shipment.

Storage Buffer:

PBS with 0.1% sodium azide and 50% glycerol pH 7.3.

Aliquoting is unnecessary for -20°C storage

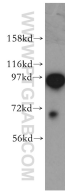
For technical support and original validation data for this product please contact:

T: 1 (888) 4PTGLAB (1-888-478-4522) (toll free in USA), or 1(312) 455-8498 (outside USA)

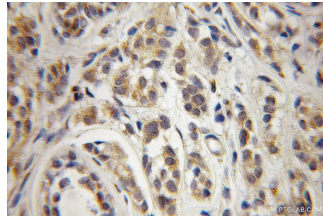
E: proteintech@ptglab.com
W: ptglab.com

This product is exclusively available under Proteintech Group brand and is not available to purchase from any other manufacturer.

Selected Validation Data



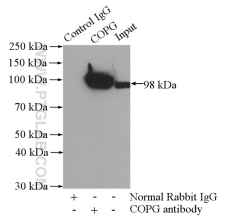
K-562 cells were subjected to SDS PAGE followed by western blot with 12393-1-AP(COPG antibody) at dilution of 1:500 incubated at room temperature for 1.5 hours



Immunohistochemical of paraffin-embedded human breast cancer using 12393-1-AP(COPG antibody) at dilution of 1:50 (under 10x lens)



Immunofluorescent analysis of HepG2 cells, using COPG antibody 12393-1-AP at 1:25 dilution and Rhodamine-labeled goat anti-rabbit IgG (red). Blue pseudocolor = DAPI (fluorescent DNA dye).



IP Result of anti-COPG (IP: 12393-1-AP; 4ug; Detection: 12393-1-AP 1:2000) with K-562 cells lysate 3600ug.