

For Research Use Only

MAT1A

Polyclonal ANTIBODY



Catalog Number: 12395-1-AP

7 Publications

Basic Information

Catalog Number:
12395-1-AP

Size:
23 µg/150 µl

Source:
Rabbit

Isotype:
IgG

Purification Method:
Antigen affinity purification

Immunogen Catalog Number:
AG3076

GenBank Accession Number:
BC018359

GeneID (NCBI):
4143

Full Name:
methionine adenosyltransferase I, alpha

Calculated MW:
395aa, 44 kDa

Observed MW:
44-55 kDa

Recommended Dilutions:

WB 1:1000-1:4000

IHC 1:20-1:400

Applications

Tested Applications:

IHC, WB, ELISA

Cited Applications:

IHC, WB

Species Specificity:

human, mouse, rat, arabidopsis

Cited Species:

human, mouse, rat

Note: suggested antigen retrieval with TE buffer pH 9.0; (*) Alternatively, antigen retrieval may be performed with citrate buffer pH 6.0

Positive Controls:

WB : mouse liver tissue; arabidopsis whole plant

IHC : human lung tissue;

Background Information

Methionine adenosyltransferase (MAT) is the enzyme that catalyzes the synthesis of S-adenosylmethionine (AdoMet), the main donor of methyl groups in the cell. In mammals MAT is encoded by two different genes, MAT1A and MAT2A. MAT1A is expressed only in the mature liver whereas fetal hepatocytes, extrahepatic tissues and liver cancer cells express MAT2A. This antibody was raised against the full length of human MAT1A and may cross-react with MAT2A. Western blot analysis using this antibody detected a single band around 44-50kD in liver.

Notable Publications

Author	Pubmed ID	Journal	Application
Vitvitsky Victor V	23707637	Mech Ageing Dev	WB
Minjian Chen	24449424	Toxicol Sci	WB
Jihyun An	29448301	J Surg Oncol	IHC

Storage

Storage:

Store at -20°C. Stable for one year after shipment.

Storage Buffer:

PBS with 0.1% sodium azide and 50% glycerol pH 7.3.

Aliquoting is unnecessary for -20°C storage

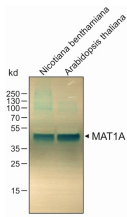
For technical support and original validation data for this product please contact:

T: 1 (888) 4PTGLAB (1-888-478-4522) (toll free in USA), or 1(312) 455-8498 (outside USA)

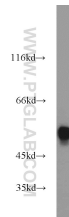
E: proteintech@ptglab.com
W: ptglab.com

This product is exclusively available under Proteintech Group brand and is not available to purchase from any other manufacturer.

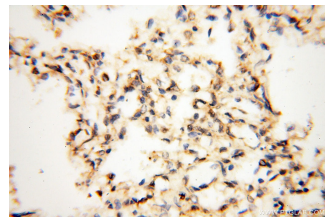
Selected Validation Data



WB result of MAT1A antibody (12395-1-AP, 1:5000) with plant leaf tissue samples.



mouse liver tissue were subjected to SDS PAGE followed by western blot with 12395-1-AP(MAT1A antibody) at dilution of 1:1000 incubated at room temperature for 1.5 hours



Immunohistochemical of paraffin-embedded human lung using 12395-1-AP(MAT1A antibody) at dilution of 1:200 (under 40x lens)