

For Research Use Only

LBR Polyclonal antibody

Catalog Number: 12398-1-AP **5 Publications**



Basic Information

Catalog Number:

12398-1-AP

Size:

150UL, Concentration: 213 µg/ml by Bradford method using BSA as the standard;

Source:

Rabbit

Isotype:

IgG

Immunogen Catalog Number:

AG3088

GenBank Accession Number:

BC020079

GeneID (NCBI):

3930

Full Name:

lamin B receptor

Calculated MW:

615 aa, 71 kDa

Observed MW:

58 kDa

Purification Method:

Antigen affinity purification

Recommended Dilutions:

WB 1:1000-1:4000

IP 0.5-4.0 µg for IP and 1:500-1:1000 for WB

IF 1:25-1:100

Applications

Tested Applications:

FC, IF, IP, WB, ELISA

Cited Applications:

IF, WB

Species Specificity:

human, mouse, rat

Cited Species:

human

Positive Controls:

WB : A375 cells, human brain tissue, C2C12 cells

IP : A375 cells,

IF : HeLa cells, C6 cells, HepG2 cells

Background Information

Lamin-B receptor (LBR) belongs to the ERG4/ERG24 family. LBR is a 58-kDa integral protein of the nuclear envelope inner membrane and anchors the lamina and the heterochromatin to the inner nuclear membrane. LBR may mediate interaction between chromatin and lamin B. Mutations of the LBR gene has been associated with autosomal recessive HEM/Greenberg skeletal dysplasia.

Notable Publications

Author	Pubmed ID	Journal	Application
Aurelio Reyes	32735630	PLoS Genet	WB
Chen-Yu Wang	31270318	Nat Commun	
Janine Pfaff	26675233	J Cell Sci	IF

Storage

Storage:

Store at -20°C. Stable for one year after shipment.

Storage Buffer:

PBS with 0.02% sodium azide and 50% glycerol pH 7.3.

Aliquoting is unnecessary for -20°C storage

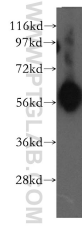
For technical support and original validation data for this product please contact:

T: 1 (888) 4PTGLAB (1-888-478-4522) (toll free in USA), or 1(312) 455-8498 (outside USA)

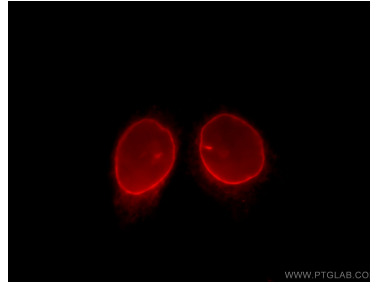
E: proteintech@ptglab.com
W: ptglab.com

This product is exclusively available under Proteintech Group brand and is not available to purchase from any other manufacturer.

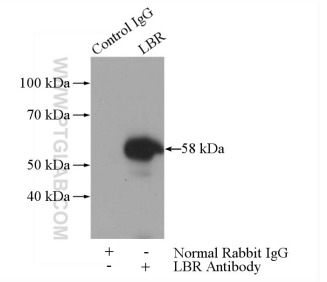
Selected Validation Data



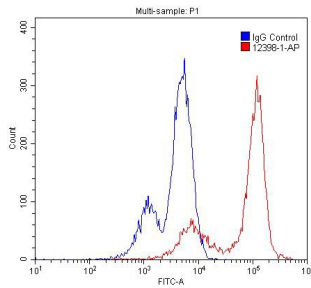
A375 cells were subjected to SDS PAGE followed by western blot with 12398-1-AP (LBR antibody) at dilution of 1:500 incubated at room temperature for 1.5 hours.



Immunofluorescent analysis of HeLa cells, using LBR antibody 12398-1-AP at 1:25 dilution and Rhodamine-labeled goat anti-rabbit IgG (red).



IP Result of anti-LBR (IP:12398-1-AP, 3ug; Detection:12398-1-AP 1:500) with A375 cells lysate 3200ug.



1X10⁶ Jurkat cells were stained with 0.2ug LBR antibody (12398-1-AP, red) and control antibody (blue). Alexa Fluor 488-conjugated AffiniPure Goat Anti-Rabbit IgG(H+L) with dilution 1:1500. Cells were fixed with 4% PFA and permeabilized with 0.1% Triton X-100.