

For Research Use Only

SLC20A1 Polyclonal antibody

Catalog Number: 12423-1-AP **5 Publications**



Basic Information

Catalog Number:

12423-1-AP

Size:

150ul, Concentration: 1000 µg/ml by Nanodrop and 613 µg/ml by Bradford method using BSA as the standard;

Source:

Rabbit

Isotype:

IgG

Immunogen Catalog Number:

AG3084

GenBank Accession Number:

BC019944

GeneID (NCBI):

6574

Full Name:

solute carrier family 20 (phosphate transporter), member 1

Calculated MW:

679 aa, 74 kDa

Observed MW:

85 kDa

Purification Method:

Antigen affinity purification

Recommended Dilutions:

WB 1:500-1:1000

IP 0.5-4.0 ug for IP and 1:500-1:1000 for WB

IHC 1:50-1:500

Applications

Tested Applications:

IHC, IP, WB, ELISA

Cited Applications:

IF, WB

Species Specificity:

human

Cited Species:

human, rat, zebrafish

Note-IHC: suggested antigen retrieval with TE buffer pH 9.0; (*) Alternatively, antigen retrieval may be performed with citrate buffer pH 6.0

Positive Controls:

WB: HEK-293 cells, HeLa cells, human kidney tissue, Jurkat cells, K-562 cells

IP: HEK-293 cells,

IHC: human liver tissue, human breast cancer tissue, human lymphoma tissue

Background Information

SLC20A1 (also known as PiT1) is a high-affinity sodium-dependent phosphate (Pi) import protein. It is widely expressed and plays a fundamental housekeeping role in phosphate transport, such as absorbing phosphate from interstitial fluid for normal cellular functions. SLC20A1 is involved in cell proliferation, tumor growth and cell signaling independently of its transport function. SLC20A1 also functions as a retroviral receptor, causing human cells to be susceptible to infection by gibbon ape leukemia virus, simian sarcoma-associated virus, feline leukemia virus subgroup B, and 10A1 murine leukemia virus.

Notable Publications

Author	Pubmed ID	Journal	Application
Nhung Thi Nguyen	33095057	Am J Physiol Heart Circ Physiol	WB
Ping Wang	33439323	Calcif Tissue Int	WB
Nina Bon	29233890	J Biol Chem	WB

Storage

Storage:

Store at -20°C. Stable for one year after shipment.

Storage Buffer:

PBS with 0.02% sodium azide and 50% glycerol pH 7.3.

Aliquoting is unnecessary for -20°C storage

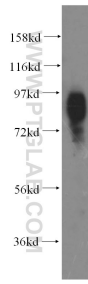
For technical support and original validation data for this product please contact:

T: 1 (888) 4PTGLAB (1-888-478-4522) (toll free in USA), or 1(312) 455-8498 (outside USA)

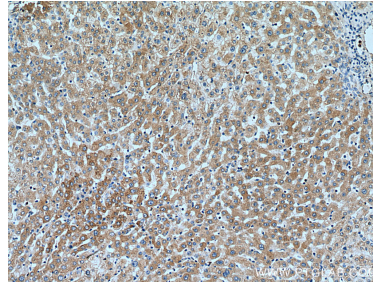
E: proteintech@ptglab.com
W: ptglab.com

This product is exclusively available under Proteintech Group brand and is not available to purchase from any other manufacturer.

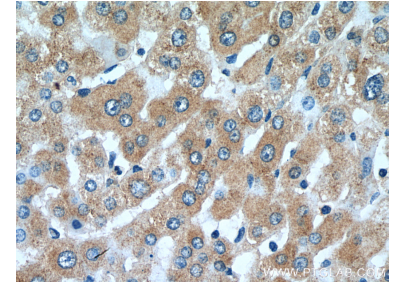
Selected Validation Data



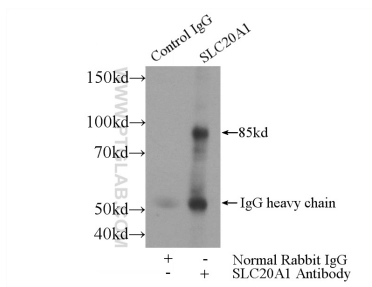
HEK-293 cells were subjected to SDS PAGE followed by western blot with 12423-1-AP (SLC20A1 antibody) at dilution of 1:500 incubated at room temperature for 1.5 hours.



Immunohistochemical analysis of paraffin-embedded human liver tissue slide using 12423-1-AP (SLC20A1 antibody) at dilution of 1:200 (under 10x lens). Heat mediated antigen retrieval with Tris-EDTA buffer (pH 9.0).



Immunohistochemical analysis of paraffin-embedded human liver tissue slide using 12423-1-AP (SLC20A1 antibody) at dilution of 1:200 (under 40x lens). Heat mediated antigen retrieval with Tris-EDTA buffer (pH 9.0).



IP Result of anti-SLC20A1 (IP:12423-1-AP, 4ug; Detection:12423-1-AP 1:500) with HEK-293 cells lysate 2800ug.