

For Research Use Only

# TBL2 Polyclonal antibody

Catalog Number: 12488-1-AP

Featured Product

6 Publications



## Basic Information

### Catalog Number:

12488-1-AP

### Size:

150ul, Concentration: 400 ug/ml by Nanodrop and 313 ug/ml by Bradford method using BSA as the standard;

### Source:

Rabbit

### Isotype:

IgG

### Immunogen Catalog Number:

AG3200

### GenBank Accession Number:

BC012938

### GeneID (NCBI):

26608

### UNIPROT ID:

Q9Y4P3

### Full Name:

transducin (beta)-like 2

### Calculated MW:

446 aa, 50 kDa

### Observed MW:

45-50 kDa

### Purification Method:

Antigen affinity purification

### Recommended Dilutions:

WB: 1:500-1:2000

IP: 0.5-4.0 ug for 1.0-3.0 mg of total protein lysate

IHC: 1:20-1:200

IF/ICC: 1:10-1:100

## Applications

### Tested Applications:

WB, IHC, IF/ICC, IP, ELISA

### Cited Applications:

WB, IHC, IF

### Species Specificity:

human, mouse

### Cited Species:

human

**Note-IHC: suggested antigen retrieval with TE buffer pH 9.0; (\*) Alternatively, antigen retrieval may be performed with citrate buffer pH 6.0**

### Positive Controls:

**WB**: COLO 320 cells, HeLa cells, human placenta tissue, Jurkat cells, mouse pancreas tissue, mouse placenta tissue

**IP**: COLO 320 cells,

**IHC**: human pancreas cancer tissue, human heart tissue, human pancreas tissue

**IF/ICC**: HepG2 cells,

## Background Information

TBL2 belongs to a member of the beta-transducin protein family. This gene is commonly deleted in Williams-Beuren syndrome, a developmental disorder with multi-system manifestations caused by haploinsufficiency for contiguous genes deleted in chromosome region 7q11.23. TBL2 encodes a protein with four putative WD40 repeats, which may be involved in some intracellular signaling pathway.

## Notable Publications

Author	Pubmed ID	Journal	Application
Yoshinori Tsukumo	25393282	PLoS One	WB, IF
Yoshinori Tsukumo	25976671	Biochem Biophys Res Commun	WB, IF
Yoshinori Tsukumo	26239904	J Cell Biochem	WB

## Storage

### Storage:

Store at -20°C. Stable for one year after shipment.

### Storage Buffer:

PBS with 0.02% sodium azide and 50% glycerol, pH7.3

Aliquoting is unnecessary for -20°C storage

\*\*\* 20ul sizes contain 0.1% BSA

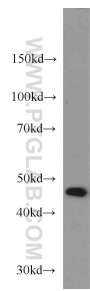
For technical support and original validation data for this product please contact:

T: 1 (888) 4PTGLAB (1-888-478-4522) (toll free in USA), or 1(312) 455-8498 (outside USA)

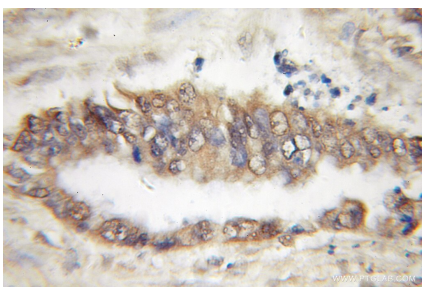
E: [proteintech@ptglab.com](mailto:proteintech@ptglab.com)  
W: [ptglab.com](http://ptglab.com)

This product is exclusively available under Proteintech Group brand and is not available to purchase from any other manufacturer.

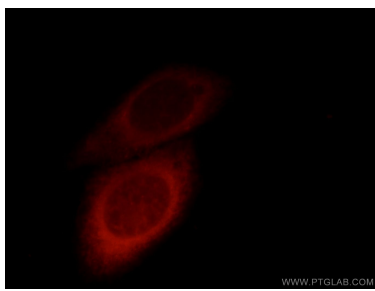
Selected Validation Data



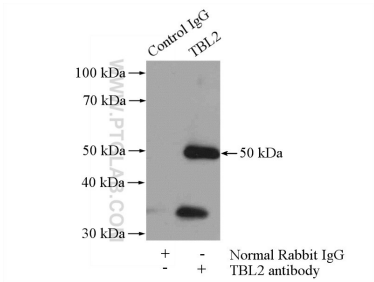
COLO 320 cells were subjected to SDS PAGE followed by western blot with 12488-1-AP (TBL2 antibody) at dilution of 1:500 incubated at room temperature for 1.5 hours.



Immunohistochemical analysis of paraffin-embedded human pancreas cancer using 12488-1-AP (TBL2 antibody) at dilution of 1:50 (under 10x lens).



Immunofluorescent analysis of ( ) fixed HepG2 cells using 12488-1-AP (TBL2 antibody) at dilution of 1:25.



IP result of anti-TBL2 (IP:12488-1-AP, 4ug; Detection:12488-1-AP 1:800) with COLO 320 cells lysate 2400ug.