

For Research Use Only

GUCY1A3 Polyclonal ANTIBODY



Catalog Number: 12605-1-AP **1 Publications**

Basic Information

Catalog Number:
12605-1-AP

Size:
150UL, Concentration: 200 µg/ml by
Bradford method using BSA as the
standard;

Source:
Rabbit

Isotype:
IgG

Immunogen Catalog Number:
AG3293

GenBank Accession Number:
BC028384

GeneID (NCBI):
2982

Full Name:
guanylate cyclase 1, soluble, alpha 3

Calculated MW:
690 aa, 77 kDa

Observed MW:
77 kDa

Purification Method:
Antigen affinity purification

Recommended Dilutions:
WB 1:500-1:2000
IP 0.5-4.0 µg for IP and 1:500-1:1000
for WB
IHC 1:20-1:200

Applications

Tested Applications:
IHC, IP, WB, ELISA

Cited Applications:
IHC, WB

Species Specificity:
human, mouse, rat

Cited Species:
mouse

**Note-IHC: suggested antigen retrieval with
TE buffer pH 9.0; (*) Alternatively, antigen
retrieval may be performed with citrate
buffer pH 6.0**

Positive Controls:

WB: human brain tissue, human cerebellum tissue,
human kidney tissue, mouse lung tissue

IP: mouse lung tissue,

IHC: human heart tissue,

Background Information

Notable Publications

| Author | Pubmed ID | Journal | Application |
|----------------|-----------|---------|-------------|
| Catarina Rippe | 28465505 | Sci Rep | WB,IHC |

Storage

Storage:

Store at -20°C. Stable for one year after shipment.

Storage Buffer:

PBS with 0.1% sodium azide and 50% glycerol pH 7.3.

Aliquoting is unnecessary for -20°C storage

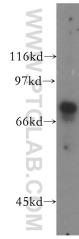
For technical support and original validation data for this product please contact:

T: 1 (888) 4PTGLAB (1-888-478-4522) (toll free
in USA), or 1(312) 455-8498 (outside USA)

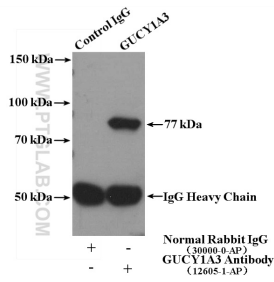
E: proteintech@ptglab.com
W: ptglab.com

**This product is exclusively available under Proteintech
Group brand and is not available to purchase from any
other manufacturer.**

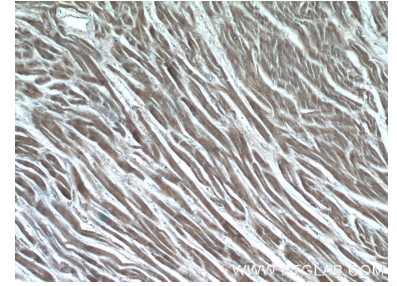
Selected Validation Data



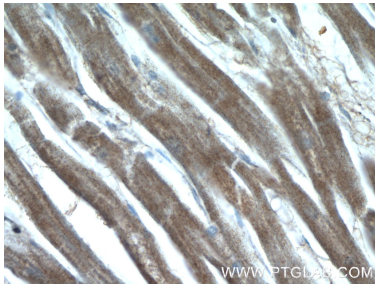
human brain tissue were subjected to SDS PAGE followed by western blot with 12605-1-AP (GUCY1A3 antibody) at dilution of 1:400 incubated at room temperature for 1.5 hours.



IP Result of anti-GUCY1A3 (IP:12605-1-AP, 4ug; Detection:12605-1-AP 1:500) with mouse lung tissue lysate 3600ug.



Immunohistochemical analysis of paraffin-embedded human heart tissue slide using 12605-1-AP (GUCY1A3 Antibody) at dilution of 1:50 (under 10x lens).



Immunohistochemical analysis of paraffin-embedded human heart tissue slide using 12605-1-AP (GUCY1A3 Antibody) at dilution of 1:50 (under 40x lens).