

For Research Use Only

BMPR1A Polyclonal antibody

Catalog Number: 12702-1-AP

Featured Product

15 Publications



Basic Information

Catalog Number:

12702-1-AP

Size:

150ul, Concentration: 450 ug/ml by Nanodrop;

Source:

Rabbit

Isotype:

IgG

Immunogen Catalog Number:

AG3410

GenBank Accession Number:

BC028383

GeneID (NCBI):

657

UNIPROT ID:

P36894

Full Name:

bone morphogenetic protein receptor, type IA

Calculated MW:

532 aa, 60 kDa

Observed MW:

60-68 kDa

Purification Method:

Antigen affinity purification

Recommended Dilutions:

WB: 1:500-1:2000

IP: 0.5-4.0 ug for 1.0-3.0 mg of total protein lysate

IF/ICC: 1:200-1:800

Applications

Tested Applications:

WB, IF/ICC, IP, ELISA

Cited Applications:

WB, IHC, IF, IP

Species Specificity:

human, mouse

Cited Species:

human, mouse, rat

Positive Controls:

WB: HeLa cells, HEK-293 cells, human heart tissue, human skeletal muscle tissue, MCF-7 cells, mouse liver tissue, Jurkat cells, K-562 cells, U2OS cells

IP: HEK-293 cells,

IF/ICC: HeLa cells, U2OS cells

Notable Publications

Author	Pubmed ID	Journal	Application
Tianmiao Huang	34743989	Biochim Biophys Acta Gen Subj	WB
Ling Guo	31578224	J Cell Biol	WB
Rui Mu	35928717	Int J Med Sci	WB

Storage

Storage:

Store at -20°C. Stable for one year after shipment.

Storage Buffer:

PBS with 0.02% sodium azide and 50% glycerol, pH7.3

Aliquoting is unnecessary for -20°C storage

*** 20ul sizes contain 0.1% BSA

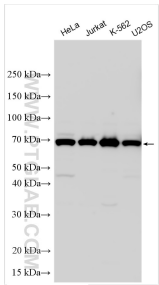
For technical support and original validation data for this product please contact:

T: 1 (888) 4PTGLAB (1-888-478-4522) (toll free in USA), or 1(312) 455-8498 (outside USA)

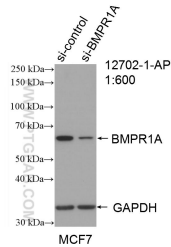
E: proteintech@ptglab.com
W: ptglab.com

This product is exclusively available under Proteintech Group brand and is not available to purchase from any other manufacturer.

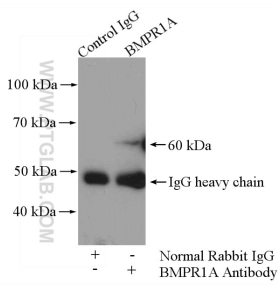
Selected Validation Data



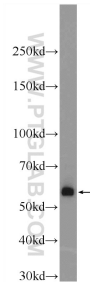
Various lysates were subjected to SDS PAGE followed by western blot with 12702-1-AP (BMPR1A antibody) at dilution of 1:1000 incubated at room temperature for 1.5 hours.



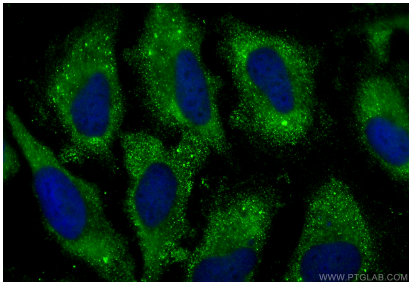
WB result of BMPR1A antibody (12702-1-AP; 1:600; incubated at room temperature for 1.5 hours) with sh-Control and sh-BMPR1A transfected MCF-7 cells.



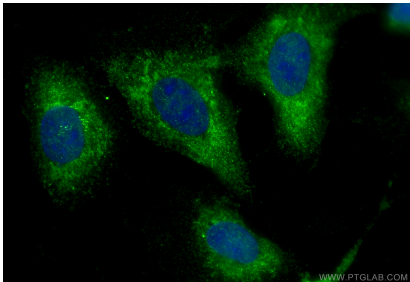
IP result of anti-BMPR1A (IP:12702-1-AP, 4ug; Detection:12702-1-AP 1:500) with HEK-293 cells lysate 2000ug.



human skeletal muscle tissue were subjected to SDS PAGE followed by western blot with 12702-1-AP (BMPR1A Antibody) at dilution of 1:1000 incubated at room temperature for 1.5 hours.



Immunofluorescent analysis of (-20°C Ethanol) fixed HeLa cells using BMPR1A antibody (12702-1-AP) at dilution of 1:400 and CoraLite®488-Conjugated Goat Anti-Rabbit IgG(H+L) (SA00013-2).



Immunofluorescent analysis of (-20°C Ethanol) fixed U2OS cells using BMPR1A antibody (12702-1-AP) at dilution of 1:400 and CoraLite®488-Conjugated Goat Anti-Rabbit IgG(H+L) (SA00013-2).