

For Research Use Only

SNAP29 Polyclonal antibody

Catalog Number: 12704-1-AP

Featured Product

32 Publications



Basic Information

Catalog Number:

12704-1-AP

Size:

150ul, Concentration: 700 ug/ml by Nanodrop and 233 ug/ml by Bradford method using BSA as the standard;

Source:

Rabbit

Isotype:

IgG

Immunogen Catalog Number:

AG3382

GenBank Accession Number:

BC009715

GeneID (NCBI):

9342

UNIPROT ID:

O95721

Full Name:

synaptosomal-associated protein, 29kDa

Calculated MW:

258 aa, 29 kDa

Observed MW:

29 kDa

Purification Method:

Antigen affinity purification

Recommended Dilutions:

WB: 1:500-1:2000

IP: 0.5-4.0 ug for 1.0-3.0 mg of total protein lysate

IHC: 1:50-1:500

IF/ICC: 1:50-1:500

Applications

Tested Applications:

WB, IHC, IF/ICC, IP, ELISA

Cited Applications:

WB, IHC, IF, IP, CoIP

Species Specificity:

human, mouse, rat

Cited Species:

human, mouse, rat

Note-IHC: suggested antigen retrieval with TE buffer pH 9.0; (*) Alternatively, antigen retrieval may be performed with citrate buffer pH 6.0

Positive Controls:

WB: human kidney tissue, K-562 cells, human liver tissue, Jurkat cells, HEK-293 cells

IP: Jurkat cells,

IHC: mouse kidney tissue, human kidney tissue, human stomach tissue

IF/ICC: PC-12 cells, HEK-293 cells, HeLa cells

Background Information

SNAREs, soluble N-ethylmaleimide-sensitive factor-attachment protein receptors, are essential proteins for the fusion of cellular membranes. SNAREs localized on opposing membranes assemble to form a trans-SNARE complex, an extended, parallel four alpha-helical bundle that drives membrane fusion. SNAP29 is a SNARE involved in autophagy through the direct control of autophagosome membrane fusion with the lysosome membrane. SNAP29 also plays a role in ciliogenesis by regulating membrane fusions.

Notable Publications

Author	Pubmed ID	Journal	Application
Zheng Li	31775910	Stem Cell Res Ther	WB
Hao-Long Zeng	29174846	Biochim Biophys Acta	WB
Yonglu Che	31712554	Nat Commun	WB,IF

Storage

Storage:

Store at -20°C. Stable for one year after shipment.

Storage Buffer:

PBS with 0.02% sodium azide and 50% glycerol, pH7.3

Aliquoting is unnecessary for -20°C storage

*** 20ul sizes contain 0.1% BSA

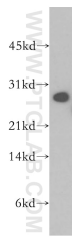
For technical support and original validation data for this product please contact:

T: 1 (888) 4PTGLAB (1-888-478-4522) (toll free in USA), or 1(312) 455-8498 (outside USA)

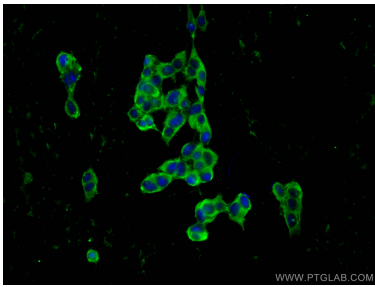
E: proteintech@ptglab.com
W: ptglab.com

This product is exclusively available under Proteintech Group brand and is not available to purchase from any other manufacturer.

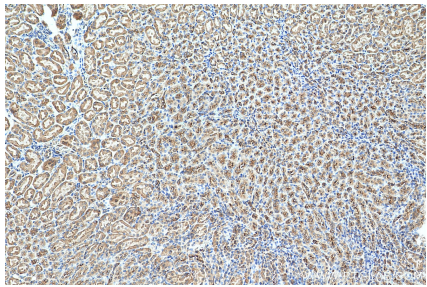
Selected Validation Data



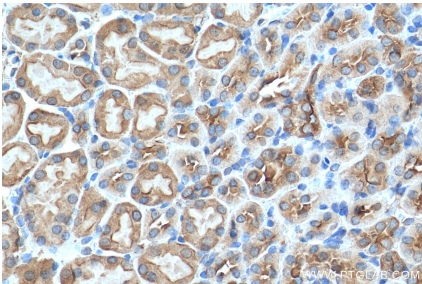
human kidney tissue were subjected to SDS PAGE followed by western blot with 12704-1-AP (SNAP29 antibody) at dilution of 1:500 incubated at room temperature for 1.5 hours.



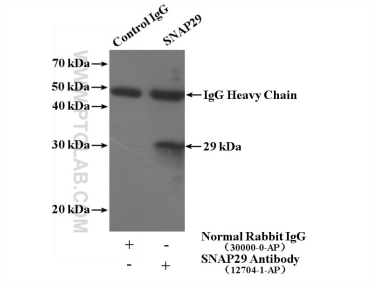
Immunofluorescent analysis of (-20°C Ethanol) fixed PC-12 cells using SNAP29 antibody (12704-1-AP) at dilution of 1:200 and CoraLite®488-Conjugated AffiniPure Goat Anti-Rabbit IgG(H+L).



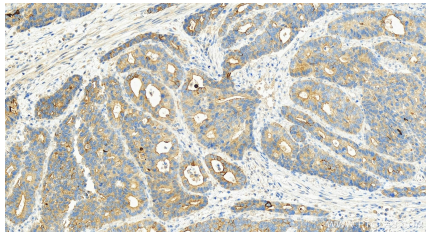
Immunohistochemical analysis of paraffin-embedded mouse kidney tissue slide using 12704-1-AP (SNAP29 antibody) at dilution of 1:200 (under 10x lens). Heat mediated antigen retrieval with Tris-EDTA buffer (pH 9.0).



Immunohistochemical analysis of paraffin-embedded mouse kidney tissue slide using 12704-1-AP (SNAP29 antibody) at dilution of 1:200 (under 40x lens). Heat mediated antigen retrieval with Tris-EDTA buffer (pH 9.0).



IP result of anti-SNAP29 (IP:12704-1-AP, 4ug; Detection:12704-1-AP 1:600) with Jurkat cells lysate 3200ug.



Immunohistochemical analysis of paraffin-embedded normal stomach slide using 12704-1-AP (SNAP29 antibody) at dilution of 1:200 (under 20x lens). Heat mediated antigen retrieval with Tris-EDTA buffer (pH 9.0).