

For Research Use Only

ELL2 Polyclonal antibody

Catalog Number: 12727-1-AP

Featured Product

7 Publications



Basic Information

Catalog Number:

12727-1-AP

Size:

150ul, Concentration: 347 ug/ml by Bradford method using BSA as the standard;

Source:

Rabbit

Isotype:

IgG

Immunogen Catalog Number:

AG3428

GenBank Accession Number:

BC028412

GeneID (NCBI):

22936

UNIPROT ID:

O00472

Full Name:

elongation factor, RNA polymerase II, 2

Calculated MW:

640 aa, 72 kDa

Observed MW:

72 kDa

Purification Method:

Antigen affinity purification

Recommended Dilutions:

WB 1:500-1:2000

IP 0.5-4.0 ug for 1.0-3.0 mg of total protein lysate

Applications

Tested Applications:

WB, IP, ELISA

Cited Applications:

WB, IF, IP

Species Specificity:

human, mouse, rat

Cited Species:

human, mouse

Positive Controls:

WB : HeLa cells, mouse stomach tissue, rat brain tissue, mouse brain tissue

IP : mouse brain tissue,

Background Information

ELL2 (Elongation Factor for RNA Polymerase II 2) is a key transcriptional elongation factor that regulates RNA polymerase II (Pol II) during mRNA synthesis (PMID: 34265249). It belongs to the ELL gene family, which includes ELL1, ELL2, and ELL3, and plays a crucial role in controlling the elongation phase of transcription (PMID: 9108030). ELL2 is an androgen-responsive gene that is expressed by prostate epithelial cells and is frequently down-regulated in prostate cancer (PMID: 29179998).

Notable Publications

Author	Pubmed ID	Journal	Application
Yuanzheng Peng	28611064	J Biol Chem	WB
Xiaorong Zhang	25083871	Cell	WB
Haoge Luo	35947121	FASEB J	WB

Storage

Storage:

Store at -20°C. Stable for one year after shipment.

Storage Buffer:

PBS with 0.02% sodium azide and 50% glycerol, pH7.3

Aliquoting is unnecessary for -20°C storage

*** 20ul sizes contain 0.1% BSA

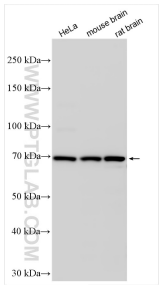
For technical support and original validation data for this product please contact:

T: 1 (888) 4PTGLAB (1-888-478-4522) (toll free in USA), or 1(312) 455-8498 (outside USA)

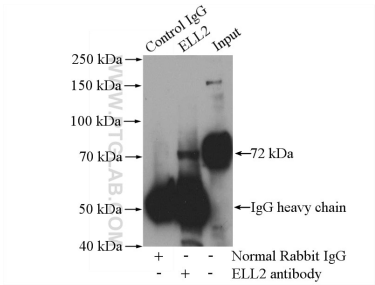
E: proteintech@ptglab.com
W: ptglab.com

This product is exclusively available under Proteintech Group brand and is not available to purchase from any other manufacturer.

Selected Validation Data



Various lysates were subjected to SDS PAGE followed by western blot with 12727-1-AP (ELL2 antibody) at dilution of 1:1000 incubated at room temperature for 1.5 hours.



IP result of anti-ELL2 (IP:12727-1-AP, 4ug; Detection:12727-1-AP 1:300) with mouse brain tissue lysate 3440ug.