

For Research Use Only

# BBS4 Polyclonal antibody

Catalog Number: 12766-1-AP

Featured Product

21 Publications



## Basic Information

### Catalog Number:

12766-1-AP

### Size:

150ul, Concentration: 220 ug/ml by Nanodrop and 140 ug/ml by Bradford method using BSA as the standard;

### Source:

Rabbit

### Isotype:

IgG

### Immunogen Catalog Number:

AG3430

### GenBank Accession Number:

BC027624

### GeneID (NCBI):

585

### UNIPROT ID:

Q96RK4

### Full Name:

Bardet-Biedl syndrome 4

### Calculated MW:

519 aa, 58 kDa

### Observed MW:

50-60 kDa

### Purification Method:

Antigen affinity purification

### Recommended Dilutions:

WB: 1:500-1:4000

IHC: 1:20-1:200

IF/ICC: 1:50-1:400

## Applications

### Tested Applications:

WB, IHC, IF/ICC, ELISA

### Cited Applications:

WB, IF

### Species Specificity:

human, mouse, rat

### Cited Species:

human, mouse, rat

**Note-IHC: suggested antigen retrieval with TE buffer pH 9.0; (\*) Alternatively, antigen retrieval may be performed with citrate buffer pH 6.0**

### Positive Controls:

WB: HEK-293 cells, mouse kidney tissue

IHC: human kidney tissue,

IF/ICC: hTERT-RPE1 cells,

## Background Information

BBS4 (Bardet-Biedl syndrome protein 4) is one of the early BBS proteins discovered, with 35 mutations reported to cause the BBS phenotype (PMID: 26762677). BBS4 undergoes localization to the centriolar satellites of centrosomes and basal body of primary cilia, where it takes part in recruiting cargo to centriolar satellites and allowing the formation of a functional centrosomal microtubule organizing center (MTOC) (PMID: 25860617). Some research has found that BBS4 expression in humans during the development of CNS and sensory organs, concerning the cardinal clinical signs of BBS (PMID: 33860840).

## Notable Publications

Author	Pubmed ID	Journal	Application
Naila Haq	31479441	PLoS Biol	WB, IF
Deniz Conkar	31582766	Sci Rep	WB
Tianyu Wu	36395215	Science	IF

## Storage

### Storage:

Store at -20°C. Stable for one year after shipment.

### Storage Buffer:

PBS with 0.02% sodium azide and 50% glycerol, pH7.3

Aliquoting is unnecessary for -20°C storage

\*\*\* 20ul sizes contain 0.1% BSA

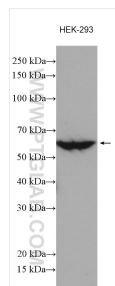
For technical support and original validation data for this product please contact:

T: 1 (888) 4PTGLAB (1-888-478-4522) (toll free in USA), or 1(312) 455-8498 (outside USA)

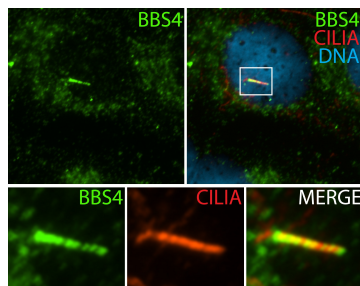
E: [proteintech@ptglab.com](mailto:proteintech@ptglab.com)  
W: [ptglab.com](http://ptglab.com)

This product is exclusively available under Proteintech Group brand and is not available to purchase from any other manufacturer.

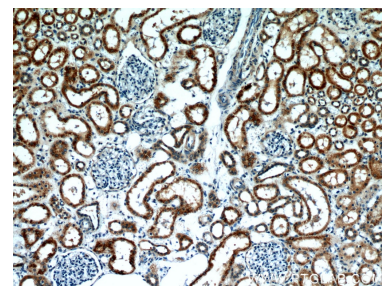
## Selected Validation Data



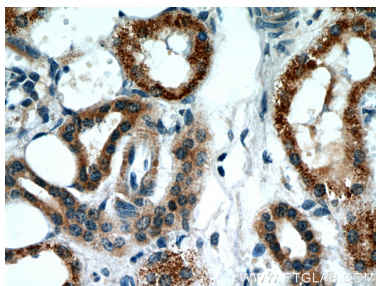
HEK-293 cell lysates were subjected to SDS PAGE followed by western blot with 12766-1-AP (BBS4 antibody) at dilution of 1:2000 incubated at room temperature for 1.5 hours.



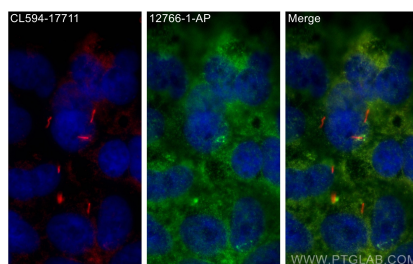
IF result (cytoplasm and the length of cilia cilia stain) of anti-BBS4 (12766-1-AP; 1:50) with serum-starved hTERT-RPE1 cell (MeOH fixed) by Dr. Moshe Kim.



Immunohistochemical analysis of paraffin-embedded human kidney using 12766-1-AP (BBS4 antibody) at dilution of 1:50 (under 10x lens).



Immunohistochemical analysis of paraffin-embedded human kidney using 12766-1-AP (BBS4 antibody) at dilution of 1:50 (under 40x lens).



Immunofluorescent analysis of (4% PFA) fixed hTERT-RPE1 cells using BBS4 antibody (12766-1-AP) at dilution of 1:400 and Multi-rAb CoraLite® Plus 488-Goat Anti-Rabbit Recombinant Secondary Antibody (H+L) (RGAR002), CoraLite®594 ARL13B antibody (CL594-17711, red).