

For Research Use Only

# CP110 Polyclonal antibody

Catalog Number: 12780-1-AP

Featured Product

157 Publications



## Basic Information

### Catalog Number:

12780-1-AP

### Size:

150ul, Concentration: 550 ug/ml by Nanodrop;

### Source:

Rabbit

### Isotype:

IgG

### Immunogen Catalog Number:

AG3489

### GenBank Accession Number:

BC036654

### GeneID (NCBI):

9738

### UNIPROT ID:

O43303

### Full Name:

CP110 protein

### Calculated MW:

991 aa, 111 kDa

### Observed MW:

113 kDa

### Purification Method:

Antigen affinity purification

### Recommended Dilutions:

WB: 1:2000-1:12000

IP: 0.5-4.0 ug for 1.0-3.0 mg of total protein lysate

IHC: 1:250-1:1000

IF/ICC: 1:50-1:500

FC (Intra): 0.20 ug per 10<sup>6</sup> cells in a 100 µl suspension

## Applications

### Tested Applications:

WB, IHC, IF/ICC, FC (Intra), IP, ELISA

### Cited Applications:

WB, IHC, IF, IP

### Species Specificity:

human, mouse, rat, canine

### Cited Species:

human, mouse, rat, canine, zebrafish, drosophila, xenopus

**Note-IHC: suggested antigen retrieval with TE buffer pH 9.0; (\*) Alternatively, antigen retrieval may be performed with citrate buffer pH 6.0**

### Positive Controls:

WB: HCT 116 cells, HeLa cells, HEK-293T cells, Jurkat cells, MOLT-4 cells

IP: Jurkat cells,

IHC: human prostate cancer tissue,

IF/ICC: hTERT-RPE1 cells, U2OS cells

FC (Intra): HeLa cells,

## Background Information

CP110, also named as CCP110 and KIAA0419, is an 110kDa protein. This gene is different to the gene CEP110 (geneID:11064; CNTRL). CP110 is a centriolar protein that positively regulates centriole duplication while restricting centriole elongation and ciliogenesis. And it acts as a key negative regulator of ciliogenesis in collaboration with CEP97 by capping the mother centriole thereby preventing cilia formation.

## Notable Publications

Author	Pubmed ID	Journal	Application
Roberta Sala	32966175	Mol Biol Cell	IF
Chii Shyang Fong	30230954	Mol Biol Cell	
Emmanuelle Steib	32946374	Elife	IF

## Storage

### Storage:

Store at -20°C. Stable for one year after shipment.

### Storage Buffer:

PBS with 0.02% sodium azide and 50% glycerol, pH7.3

Aliquoting is unnecessary for -20°C storage

\*\*\* 20ul sizes contain 0.1% BSA

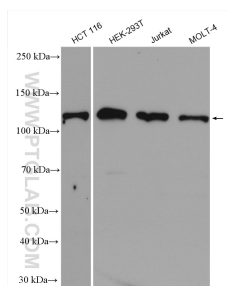
For technical support and original validation data for this product please contact:

T: 1 (888) 4PTGLAB (1-888-478-4522) (toll free in USA), or 1(312) 455-8498 (outside USA)

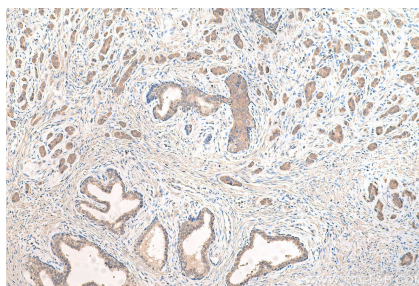
E: [proteintech@ptglab.com](mailto:proteintech@ptglab.com)  
W: [ptglab.com](http://ptglab.com)

This product is exclusively available under Proteintech Group brand and is not available to purchase from any other manufacturer.

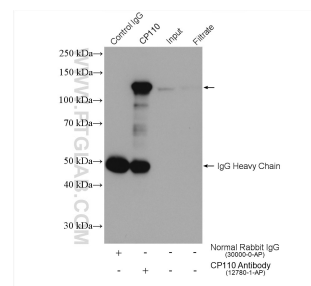
## Selected Validation Data



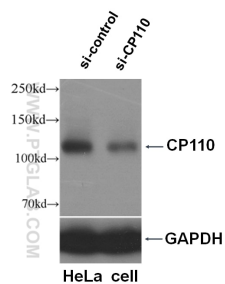
Various lysates were subjected to SDS PAGE followed by western blot with 12780-1-AP (CP110 antibody) at dilution of 1:6000 incubated at room temperature for 1.5 hours.



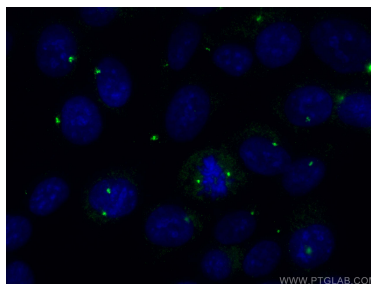
Immunohistochemical analysis of paraffin-embedded human prostate cancer tissue slide using 12780-1-AP (CP110 antibody) at dilution of 1:500 (under 10x lens). Heat mediated antigen retrieval with Tris-EDTA buffer (pH 9.0).



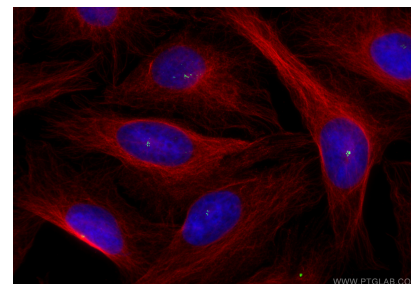
IP result of anti-CP110 (IP:12780-1-AP, 4ug; Detection:12780-1-AP 1:1500) with Jurkat cells lysate 2400 ug.



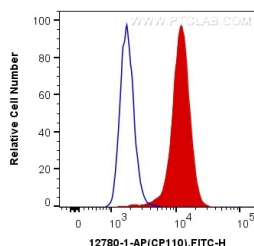
WB result of CP110 antibody (12780-1-AP, 1:500) with si-control and si-CP110 transfected HeLa cells.



Immunofluorescent analysis of (-20°C Methanol) fixed hTERT-RPE1 cells using CP110 antibody (12780-1-AP) at dilution of 1:200 and CoraLite®488-Conjugated AffiniPure Goat Anti-Rabbit IgG(H+L) (SA00013-2).



Immunofluorescent analysis of (4% PFA) fixed U2OS cells using CP110 antibody (12780-1-AP) at dilution of 1:200 and CoraLite®488-Conjugated AffiniPure Goat Anti-Rabbit IgG(H+L) (SA00013-2), Alpha Tubulin antibody (66031-1-Ig, Clone: 1E4C11, red).



1X10<sup>6</sup> HeLa cells were intracellularly stained with 0.2 ug Anti-Human CP110 (12780-1-AP) and CoraLite®488-Conjugated AffiniPure Goat Anti-Rabbit IgG(H+L) at dilution 1:1000 (red), or 0.2 ug Control Antibody. Cells were fixed with 4% PFA and permeabilized with Flow Cytometry Perm Buffer (PF00011-C).