

For Research Use Only

# Centrin 1 Polyclonal antibody

Catalog Number: 12794-1-AP

44 Publications



## Basic Information

Catalog Number:

12794-1-AP

Size:

150ul, Concentration: 850 ug/ml by Nanodrop;

Source:

Rabbit

Isotype:

IgG

Immunogen Catalog Number:

AG3529

GenBank Accession Number:

BC029515

GeneID (NCBI):

1068

UNIPROT ID:

Q12798

Full Name:

centrin, EF-hand protein, 1

Calculated MW:

172 aa, 20 kDa

Observed MW:

20 kDa

Purification Method:

Antigen affinity purification

Recommended Dilutions:

WB: 1:500-1:2000

IF/ICC: 1:200-1:800

## Applications

Tested Applications:

WB, IF/ICC, ELISA

Cited Applications:

WB, IF

Species Specificity:

human

Cited Species:

human, mouse, zebrafish

Positive Controls:

WB: HL-60 cells, human heart tissue

IF/ICC: hTERT-RPE1 cells, HeLa cells

## Background Information

EF-hand type Ca<sup>2+</sup>-binding proteins consists of several family members, including Centrin-1, Centrin-2 and Centrin-3. The Centrin proteins are ubiquitously expressed cytoskeletal components that show increased expression during cell differentiation. Centrin-1 plays important roles in the determination of centrosome position and segregation, and in the process of microtubule severing. Centrin-1 is localized to the centrosome of interphase cells, and redistributes to the region of the spindle poles during mitosis, reflecting the dynamic behavior of the centrosome during the cell cycle.

## Notable Publications

Author	Pubmed ID	Journal	Application
Ivan Rosa E Silva	34499853	Structure	IF
ShuweiXie	30188792	Mol Biol Cell	IF
Zhenguang Ying	36280838	BMC Biol	IF

## Storage

Storage:

Store at -20°C. Stable for one year after shipment.

Storage Buffer:

PBS with 0.02% sodium azide and 50% glycerol, pH7.3

Aliquoting is unnecessary for -20°C storage

\*\*\* 20ul sizes contain 0.1% BSA

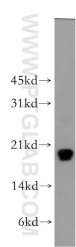
For technical support and original validation data for this product please contact:

T: 1 (888) 4PTGLAB (1-888-478-4522) (toll free in USA), or 1(312) 455-8498 (outside USA)

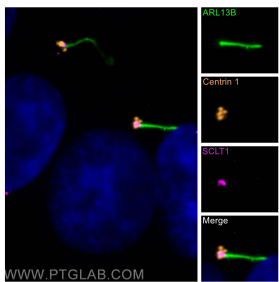
E: [proteintech@ptglab.com](mailto:proteintech@ptglab.com)  
W: [ptglab.com](http://ptglab.com)

This product is exclusively available under Proteintech Group brand and is not available to purchase from any other manufacturer.

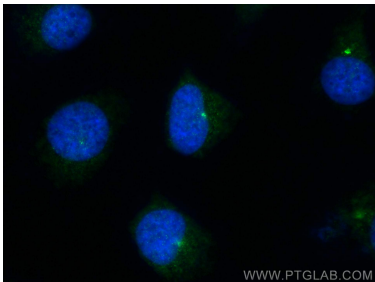
Selected Validation Data



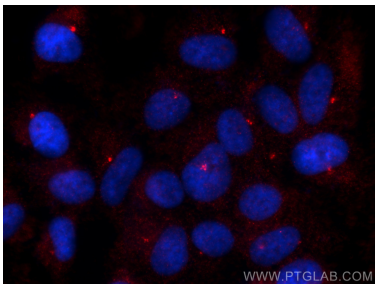
HL-60 cells were subjected to SDS PAGE followed by western blot with 12794-1-AP (Centrin 1 antibody) at dilution of 1:300 incubated at room temperature for 1.5 hours.



Immunofluorescent analysis of (-20°C Methanol) fixed hTERT-RPE1 cells using Centrin 1 antibody (12794-1-AP) at dilution of 1:50 and Cy3-conjugated Affinipure Goat Anti-Rabbit IgG(H+L), CoraLite®488 ARL13B antibody (CL488-17711, green), SCLT1 antibody (14875-1-AP, Magenta).



Immunofluorescent analysis of (-20°C Methanol) fixed HeLa cells using Centrin 1 antibody (12794-1-AP) at dilution of 1:200 and CoraLite®488-Conjugated AffiniPure Goat Anti-Rabbit IgG(H+L).



Immunofluorescent analysis of (-20°C Methanol) fixed hTERT-RPE1 cells using Centrin 1 antibody (12794-1-AP) at dilution of 1:400 and CoraLite®594-Conjugated Goat Anti-Rabbit IgG(H+L) (SA00013-4).