

For Research Use Only

# GIPC2 Polyclonal ANTIBODY



Catalog Number: 12832-1-AP

## Basic Information

**Catalog Number:**

12832-1-AP

**Size:**

150UL, Concentration: 613 µg/ml by Bradford method using BSA as the standard;

**Source:**

Rabbit

**Isotype:**

IgG

**Immunogen Catalog Number:**

AG3566

**GenBank Accession Number:**

BC036075

**GeneID (NCBI):**

54810

**Full Name:**

GI PC PDZ domain containing family, member 2

**Calculated MW:**

315 aa, 34 kDa

**Observed MW:**

34 kDa

**Purification Method:**

Antigen affinity purification

**Recommended Dilutions:**

WB 1:1000-1:5000

## Applications

**Tested Applications:**

WB, ELISA

**Species Specificity:**

human, mouse, rat

**Positive Controls:**

WB: HEK-293 cells,

## Background Information

### Storage

**Storage:**

Store at -20°C. Stable for one year after shipment.

**Storage Buffer:**

PBS with 0.1% sodium azide and 50% glycerol pH 7.3.

Aliquoting is unnecessary for -20°C storage

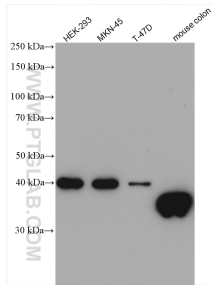
For technical support and original validation data for this product please contact:

T: 1 (888) 4PTGLAB (1-888-478-4522) (toll free in USA), or 1(312) 455-8498 (outside USA)

E: [proteintech@ptglab.com](mailto:proteintech@ptglab.com)  
W: [ptglab.com](http://ptglab.com)

This product is exclusively available under Proteintech Group brand and is not available to purchase from any other manufacturer.

## Selected Validation Data



Various lysates were subjected to SDS PAGE followed by western blot with 12832-1-AP (GIPC2 antibody) at dilution of 1:2500 incubated at room temperature for 1.5 hours.