

For Research Use Only

CENPH Polyclonal antibody

Catalog Number: 12841-1-AP

3 Publications



Basic Information

Catalog Number:

12841-1-AP

Size:

150ul, Concentration: 1000 ug/ml by Nanodrop and 453 ug/ml by Bradford method using BSA as the standard;

Source:

Rabbit

Isotype:

IgG

Immunogen Catalog Number:

AG3836

GenBank Accession Number:

BC015355

GeneID (NCBI):

64946

UNIPROT ID:

Q9H3R5

Full Name:

centromere protein H

Calculated MW:

247 aa, 28 kDa

Observed MW:

28 kDa

Purification Method:

Antigen affinity purification

Recommended Dilutions:

WB: 1:1000-1:8000

IP: 0.5-4.0 ug for 1.0-3.0 mg of total protein lysate

Applications

Tested Applications:

WB, IP, ELISA

Cited Applications:

WB

Species Specificity:

human, mouse

Cited Species:

human, mouse

Positive Controls:

WB: A549 cells, HeLa cells, NIH/3T3 cells

IP: HeLa cells,

Background Information

Centromere protein H (CENPH) is a component of the active centromere complex that associates with centromeric DNA and binds spindle microtubules to the chromosomes, which is required for chromosome congression and efficiently align the chromosomes on a metaphase plate. CENPH plays a key role in assembly of kinetochore proteins, mitotic progression and chromosome segregation that may cause misaligned chromosomes and multipolar spindles. Besides, CENPH may be associated with the modulation of the cell cycle through an interaction with CENPC. It has been shown that the expression of CENPH is related to clinical application including colorectal cancer, gastric cancer, renal cell carcinoma, hepatocellular carcinoma and other poor prognosis in various solid tumors. (PMID: 26378239, 27993978, 28819418)

Notable Publications

Author	Pubmed ID	Journal	Application
Wenbo Liu	36355419	eLife	
Qiao Li	37293159	Am J Cancer Res	WB
Hiba K Omairi	37186014	Neuro Oncol	WB

Storage

Storage:

Store at -20°C. Stable for one year after shipment.

Storage Buffer:

PBS with 0.02% sodium azide and 50% glycerol, pH7.3

Aliquoting is unnecessary for -20°C storage

*** 20ul sizes contain 0.1% BSA

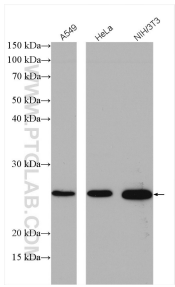
For technical support and original validation data for this product please contact:

T: 1 (888) 4PTGLAB (1-888-478-4522) (toll free in USA), or 1(312) 455-8498 (outside USA)

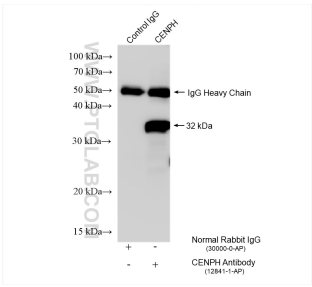
E: proteintech@ptglab.com
W: ptglab.com

This product is exclusively available under Proteintech Group brand and is not available to purchase from any other manufacturer.

Selected Validation Data



Various lysates were subjected to SDS PAGE followed by western blot with 12841-1-AP (CENPH antibody) at dilution of 1:5000 incubated at room temperature for 1.5 hours.



IP result of anti-CENPH (IP:12841-1-AP, 4ug; Detection:12841-1-AP 1:1000) with HeLa cells lysate 1600 ug.