

For Research Use Only

# HS1BP3 Polyclonal ANTIBODY

Catalog Number: 12845-1-AP



## Basic Information

Catalog Number:  
12845-1-AP

Size:  
49 µg/150 µl

Source:  
Rabbit

Isotype:  
IgG

Purification Method:  
Antigen affinity purification

Immunogen Catalog Number:  
AG3880

GenBank Accession Number:  
BC027947

GeneID (NCBI):  
64342

Full Name:  
HCLS1 binding protein 3

Calculated MW:  
392aa, 43 kDa

Observed MW:  
55-58 kDa

Recommended Dilutions:

WB 1:500-1:1000

IHC 1:20-1:200

## Applications

Tested Applications:

IHC, WB, ELISA

Species Specificity:

human,mouse,rat

**Note: suggested antigen retrieval with TE buffer pH 9.0; (\*) Alternatively, antigen retrieval may be performed with citrate buffer pH 6.0**

Positive Controls:

WB : HT-1080 cells; HeLa cells, Jurkat cells, NIH/3T3 cells

IHC : human lung cancer tissue;

## Background Information

### Notable Publications

| Author | Pubmed ID | Journal | Application |
|--------|-----------|---------|-------------|
|--------|-----------|---------|-------------|

## Storage

Storage:

Store at -20°C. Stable for one year after shipment.

Storage Buffer:

PBS with 0.02% sodium azide and 50% glycerol pH 7.3.

Aliquoting is unnecessary for -20°C storage

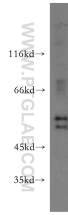
For technical support and original validation data for this product please contact:

T: 1 (888) 4PTGLAB (1-888-478-4522) (toll free in USA), or 1(312) 455-8498 (outside USA)

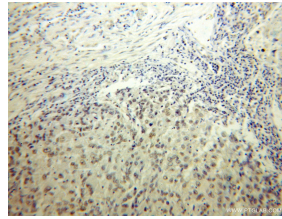
E: [proteintech@ptglab.com](mailto:proteintech@ptglab.com)  
W: [ptglab.com](http://ptglab.com)

This product is exclusively available under Proteintech Group brand and is not available to purchase from any other manufacturer.

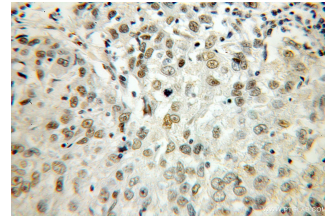
## Selected Validation Data



HT-1080 cells were subjected to SDS PAGE followed by western blot with 12845-1-AP(HS1BP3 antibody) at dilution of 1:100 incubated at room temperature for 1.5 hours



Immunohistochemical of paraffin-embedded human lung cancer using 12845-1-AP(HS1BP3 antibody) at dilution of 1:100 (under 10x lens)



Immunohistochemical of paraffin-embedded human lung cancer using 12845-1-AP(HS1BP3 antibody) at dilution of 1:100 (under 40x lens)