

For Research Use Only

# BCL2L14 Polyclonal ANTIBODY

Catalog Number: 12846-1-AP



## Basic Information

<b>Catalog Number:</b> 12846-1-AP	<b>GenBank Accession Number:</b> BC025778	<b>Purification Method:</b> Antigen affinity purification
<b>Size:</b> 150UL, Concentration: 467 µg/ml by Bradford method using BSA as the standard;	<b>GeneID (NCBI):</b> 79370	<b>Recommended Dilutions:</b> WB 1:1000-1:2000 IHC 1:20-1:200 IF 1:50-1:500
<b>Source:</b> Rabbit	<b>Full Name:</b> BCL2-like 14 (apoptosis facilitator)	
<b>Isotype:</b> IgG	<b>Calculated MW:</b> 327 aa, 37 kDa	
<b>Immunogen Catalog Number:</b> AG3926	<b>Observed MW:</b> 37 kDa	

## Applications

### Tested Applications:

IF, IHC, WB, ELISA

### Species Specificity:

human

**Note-IHC: suggested antigen retrieval with TE buffer pH 9.0; (\*) Alternatively, antigen retrieval may be performed with citrate buffer pH 6.0**

### Positive Controls:

WB: A549 cells, human lung tissue

IHC: human prostate cancer tissue,

IF: MCF-7 cells,

## Background Information

### Storage

#### Storage:

Store at -20°C. Stable for one year after shipment.

#### Storage Buffer:

PBS with 0.1% sodium azide and 50% glycerol pH 7.3.

Aliquoting is unnecessary for -20°C storage

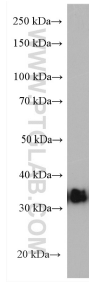
For technical support and original validation data for this product please contact:

T: 1 (888) 4PTGLAB (1-888-478-4522) (toll free in USA), or 1(312) 455-8498 (outside USA)

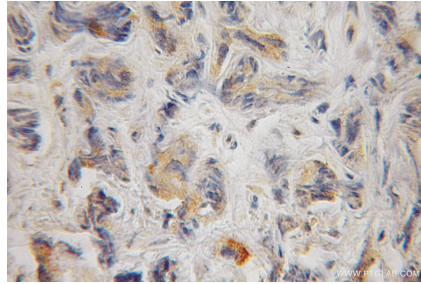
E: [proteintech@ptglab.com](mailto:proteintech@ptglab.com)  
W: [ptglab.com](http://ptglab.com)

This product is exclusively available under Proteintech Group brand and is not available to purchase from any other manufacturer.

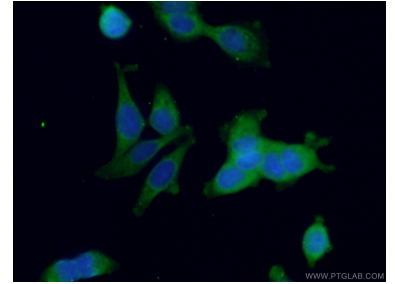
## Selected Validation Data



A549 cells were subjected to SDS PAGE followed by western blot with 12846-1-AP (BCL2L14 antibody) at dilution of 1:2000 incubated at room temperature for 1.5 hours.



Immunohistochemical analysis of paraffin-embedded human prostate cancer using 12846-1-AP (BCL2L14 antibody) at dilution of 1:100 (under 10x lens).



Immunofluorescent analysis of (-20°C Ethanol) fixed MCF-7 cells using 12846-1-AP (BCL2L14 antibody) at dilution of 1:50 and Alexa Fluor 488-Conjugated AffiniPure Goat Anti-Rabbit IgG(H+L).