

For Research Use Only

# GJB3 Polyclonal antibody

Catalog Number: 12880-1-AP

Featured Product

7 Publications



## Basic Information

### Catalog Number:

12880-1-AP

### Size:

150ul, Concentration: 240 µg/ml by Nanodrop and 240 µg/ml by Bradford method using BSA as the standard;

### Source:

Rabbit

### Isotype:

IgG

### Immunogen Catalog Number:

AG3839

### GenBank Accession Number:

BC012918

### GeneID (NCBI):

2707

### Full Name:

gap junction protein, beta 3, 31kDa

### Calculated MW:

270 aa, 31 kDa

### Observed MW:

31 kDa

### Purification Method:

Antigen affinity purification

### Recommended Dilutions:

WB 1:500-1:2000

IP 0.5-4.0 ug for IP and 1:500-1:1000 for WB

IHC 1:20-1:200

IF 1:50-1:500

## Applications

### Tested Applications:

IF, IHC, IP, WB, ELISA

### Cited Applications:

IF, IHC, WB

### Species Specificity:

human, mouse, rat

### Cited Species:

human, marmoset, mouse, rat

**Note-IHC: suggested antigen retrieval with TE buffer pH 9.0; (\*) Alternatively, antigen retrieval may be performed with citrate buffer pH 6.0**

### Positive Controls:

WB : mouse ovary tissue, HeLa cells

IP : HeLa cells,

IHC : human cervix tissue, human ovary tumor tissue, human skin cancer tissue

IF : HeLa cells,

## Background Information

GJB3, also known as Connexin-31 (Cx31), belongs to the connexin family. Connexins are membrane-spanning proteins that assemble to form gap junction channels that facilitate the transfer of ions and small molecules between cells. Mutations in the gene of GJB3 have been described in patients with dominant and recessive hearing impairment and in patients with erythrokeratoderma variabilis (EKV).

## Notable Publications

Author	Pubmed ID	Journal	Application
Masaaki Nishiyama	26124079	Stem Cells	IHC
Teng-Wei Huang	34253626	J Neurosci	IF
Makoto Hosoya	28052261	Cell Rep	WB

## Storage

### Storage:

Store at -20°C. Stable for one year after shipment.

### Storage Buffer:

PBS with 0.02% sodium azide and 50% glycerol pH 7.3.

Aliquoting is unnecessary for -20°C storage

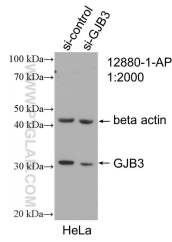
For technical support and original validation data for this product please contact:

T: 1 (888) 4PTGLAB (1-888-478-4522) (toll free in USA), or 1(312) 455-8498 (outside USA)

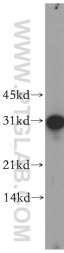
E: [proteintech@ptglab.com](mailto:proteintech@ptglab.com)  
W: [ptglab.com](http://ptglab.com)

**This product is exclusively available under Proteintech Group brand and is not available to purchase from any other manufacturer.**

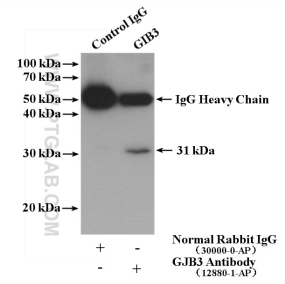
## Selected Validation Data



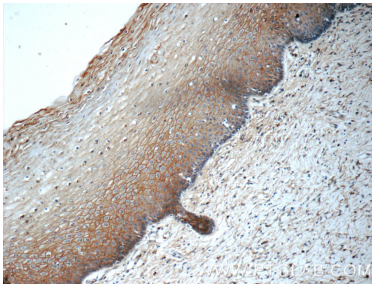
WB result of GJB3 antibody (12880-1-AP; 1:2000; incubated at room temperature for 1.5 hours) with sh-Control and sh-GJB3 transfected HeLa cells.



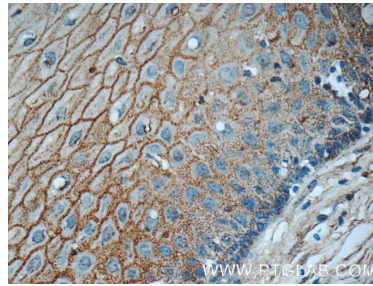
mouse ovary tissue were subjected to SDS PAGE followed by western blot with 12880-1-AP (GJB3 antibody) at dilution of 1:500 incubated at room temperature for 1.5 hours.



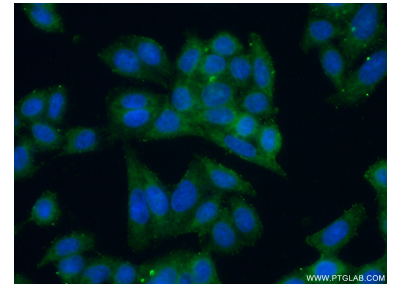
IP result of anti-GJB3 (IP:12880-1-AP, 4ug; Detection:12880-1-AP 1:500) with HeLa cells lysate 2600 ug.



Immunohistochemical analysis of paraffin-embedded human cervix tissue slide using 12880-1-AP (GJB3 Antibody) at dilution of 1:50 (under 10x lens).



Immunohistochemical analysis of paraffin-embedded human cervix tissue slide using 12880-1-AP (GJB3 Antibody) at dilution of 1:50 (under 40x lens).



Immunofluorescent analysis of (-20 Ethanol) fixed HeLa cells using 12880-1-AP (GJB3 antibody) at dilution of 1:50 and Alexa Fluor 488-conjugated AffiniPure Goat Anti-Rabbit IgG(H+L).