

For Research Use Only

CUL4B Polyclonal antibody

Catalog Number: 12916-1-AP

Featured Product

32 Publications



Basic Information

Catalog Number:

12916-1-AP

Size:

150UL, Concentration: 307 µg/ml by Bradford method using BSA as the standard;

Source:

Rabbit

Isotype:

IgG

Immunogen Catalog Number:

AG3563

GenBank Accession Number:

BC036216

GeneID (NCBI):

8450

Full Name:

cullin 4B

Calculated MW:

913 aa, 104 kDa

Observed MW:

102 kDa

Purification Method:

Antigen affinity purification

Recommended Dilutions:

WB 1:500-1:2000

IP 0.5-4.0 µg for IP and 1:500-1:2000 for WB

IHC 1:50-1:500

IF 1:10-1:100

Applications

Tested Applications:

IF, IHC, IP, WB, ELISA

Cited Applications:

CoIP, IF, IHC, WB

Species Specificity:

human, mouse

Cited Species:

canine, human, mouse, rat

Note-IHC: suggested antigen retrieval with TE buffer pH 9.0; (*) Alternatively, antigen retrieval may be performed with citrate buffer pH 6.0

Positive Controls:

WB: HEK-293 cells, HeLa cells, mouse testis tissue, human testis tissue, SH-SY5Y cells, HeLa cells

IP: HeLa cells,

IHC: human gliomas tissue, human testis tissue

IF: HepG2 cells, HeLa cells

Background Information

Cullin-RING ligases (CRLs) complexes participate in the regulation of diverse cellular processes, including cell cycle progression, transcription, signal transduction and development (PMID: 21816341)(PMID: 21554755). Serving as the scaffold protein, cullins are crucial for the assembly of ligase complexes, which recognize and target various substrates for proteasomal degradation. Two cullin 4 (CUL4) proteins, CUL4A (87 kDa) and CUL4B (104 kDa), are two members in cullin family with 83% of identity. Mutations in human CUL4B are one of the major causes of X-linked mental retardation. Cul4b knockout mice demonstrated that CUL4B is indispensable for embryonic development in the mouse (PMID: 22606329).

Notable Publications

Author	Pubmed ID	Journal	Application
Liu Helio C HC	22992378	BMC Neurosci	WB, IF
Yi-Jheng Peng	27580824	Sci Rep	WB
Tomoaki Nagai	30404837	J Cell Sci	WB

Storage

Storage:

Store at -20°C. Stable for one year after shipment.

Storage Buffer:

PBS with 0.1% sodium azide and 50% glycerol pH 7.3.

Aliquoting is unnecessary for -20°C storage

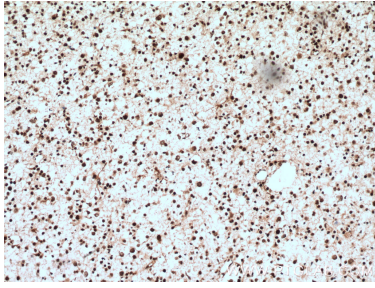
For technical support and original validation data for this product please contact:

T: 1 (888) 4PTGLAB (1-888-478-4522) (toll free in USA), or 1(312) 455-8498 (outside USA)

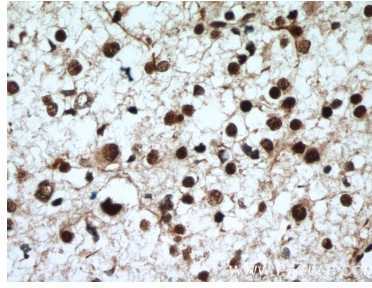
E: proteintech@ptglab.com
W: ptglab.com

This product is exclusively available under Proteintech Group brand and is not available to purchase from any other manufacturer.

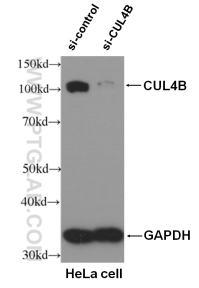
Selected Validation Data



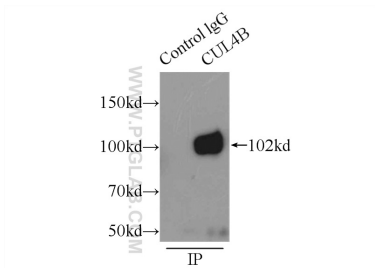
Immunohistochemical analysis of paraffin-embedded human gliomas tissue slide using 12916-1-AP(CUL4B antibody) at dilution of 1:100 (under 10x lens. Heat mediated antigen retrieval with Tris-EDTA buffer (pH 9.0).



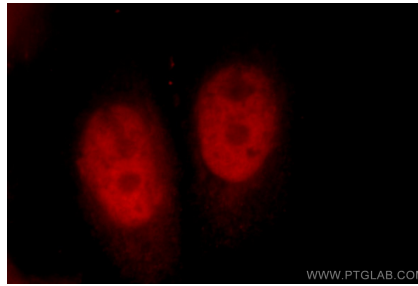
Immunohistochemical analysis of paraffin-embedded human gliomas tissue slide using 12916-1-AP(CUL4B antibody) at dilution of 1:100 (under 40x lens. Heat mediated antigen retrieval with Tris-EDTA buffer (pH 9.0).



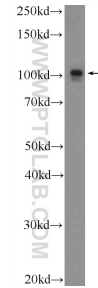
WB result of CUL4B antibody (12916-1-AP, 1:2,000) with si-Control and si-CUL4B transfected HeLa cells.



IP Result of anti-CUL4B (IP:12916-1-AP, 3ug; Detection:12916-1-AP 1:1000) with HeLa cells lysate 4650ug.



Immunofluorescent analysis of HepG2 cells, using CUL4B antibody 12916-1-AP at 1:25 dilution and Rhodamine-labeled goat anti-rabbit IgG (red).



HEK-293 cells were subjected to SDS PAGE followed by western blot with 12916-1-AP (CUL4B Antibody) at dilution of 1:1000 incubated at room temperature for 1.5 hours.