

For Research Use Only

BVES Polyclonal antibody

Catalog Number: 12920-1-AP

2 Publications



Basic Information

Catalog Number:

12920-1-AP

Size:

150ul, Concentration: 150 ug/ml by Nanodrop and 133 ug/ml by Bradford method using BSA as the standard;

Source:

Rabbit

Isotype:

IgG

Immunogen Catalog Number:

AG3593

GenBank Accession Number:

BC034425

GeneID (NCBI):

11149

UNIPROT ID:

Q8NE79

Full Name:

blood vessel epicardial substance

Calculated MW:

360 aa, 41 kDa

Observed MW:

41-70 kDa

Purification Method:

Antigen affinity purification

Recommended Dilutions:

WB 1:500-1:1000

IHC 1:20-1:200

Applications

Tested Applications:

WB, IHC, ELISA

Cited Applications:

WB, IHC

Species Specificity:

human, mouse, rat

Cited Species:

human

Positive Controls:

WB : mouse skeletal muscle tissue,

IHC : human ovary tumor tissue,

Note-IHC: suggested antigen retrieval with TE buffer pH 9.0; (*) Alternatively, antigen retrieval may be performed with citrate buffer pH 6.0

Background Information

BVES, also named as POP1, POPDC1 and hBVES, belongs to the popeye family. It is cell adhesion molecule involved in the establishment and/or maintenance of cell integrity. It is involved in the formation and regulation of the tight junction (TJ) paracellular permeability barrier in epithelial cells. It is also involved in striated muscle regeneration and repair and in the regulation of cell spreading. BVES is expressed in the progenitors of coronary artery smooth muscle cells as well as in differentiated smooth muscle cells.

Notable Publications

Author	Pubmed ID	Journal	Application
Wang-Sheng Chen	37711058	Oncol Rep	WB
Luo Deng D	22109561	Pathol Oncol Res	IHC

Storage

Storage:

Store at -20°C. Stable for one year after shipment.

Storage Buffer:

PBS with 0.02% sodium azide and 50% glycerol pH 7.3.

Aliquoting is unnecessary for -20°C storage

*** 20ul sizes contain 0.1% BSA

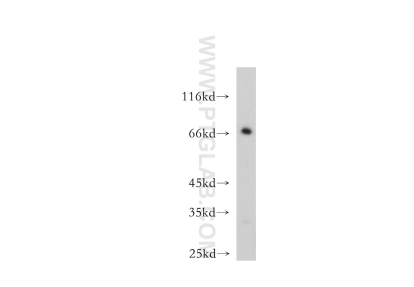
For technical support and original validation data for this product please contact:

T: 1 (888) 4PTGLAB (1-888-478-4522) (toll free in USA), or 1(312) 455-8498 (outside USA)

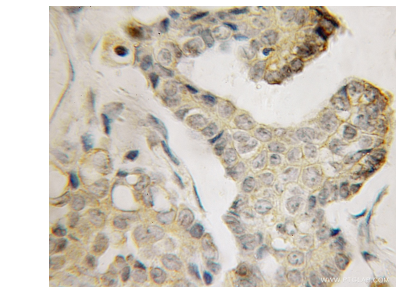
E: proteintech@ptglab.com
W: ptglab.com

This product is exclusively available under Proteintech Group brand and is not available to purchase from any other manufacturer.

Selected Validation Data



mouse skeletal muscle tissue were subjected to SDS PAGE followed by western blot with 12920-1-AP (BVES antibody) at dilution of 1:500 incubated at room temperature for 1.5 hours.



Immunohistochemical analysis of paraffin-embedded human ovary tumor using 12920-1-AP (BVES antibody) at dilution of 1:100 (under 10x lens).