

For Research Use Only

# NFE2L1 Polyclonal antibody

Catalog Number: 12936-1-AP

Featured Product

5 Publications



## Basic Information

**Catalog Number:**

12936-1-AP

**Size:**

150UL, Concentration: 620 µg/ml by Bradford method using BSA as the standard;

**Source:**

Rabbit

**Isotype:**

IgG

**Immunogen Catalog Number:**

AG3916

**GenBank Accession Number:**

BC010623

**GeneID (NCBI):**

4779

**Full Name:**

nuclear factor (erythroid-derived 2)-like 1

**Calculated MW:**

772 aa, 85 kDa

**Observed MW:**

65 kDa

**Purification Method:**

Antigen affinity purification

**Recommended Dilutions:**

WB 1:500-1:1000

IP 0.5-4.0 µg for IP and 1:500-1:1000 for WB

## Applications

**Tested Applications:**

IP, WB, ELISA

**Cited Applications:**

ChIP, IF, WB

**Species Specificity:**

human, mouse, rat

**Cited Species:**

human, mouse

**Positive Controls:**

**WB:** mouse skeletal muscle tissue, Fetal mouse bone tissue, HeLa cells, HepG2 cells, Jurkat cells, K-562 cells

**IP:** mouse skeletal muscle tissue,

## Background Information

NFE2L1, also named as HBZ17, NRF1, TCF11 and LCR-F1, belongs to the bZIP family and CNC subfamily. It activates erythroid-specific, globin gene expression. NFE2L1 is involved in mediating ascorbic acid-induced osterix expression and osteoblast differentiation via binding to the antioxidant response element of the osterix promoter. NFE2L1, produced by osteoblasts, is involved in regulating osterix expression, osteoblast differentiation, and bone formation. (PMID:19887580). This antibody is a rabbit polyclonal antibody raised against a region of human NFE2L1.

## Notable Publications

Author	Pubmed ID	Journal	Application
Michelle A Schultz	24466341	PLoS One	ChIP
Peng Xue	31931283	Redox Biol	WB
Yanying An	31883458	Cell Signal	WB

## Storage

**Storage:**

Store at -20°C. Stable for one year after shipment.

**Storage Buffer:**

PBS with 0.02% sodium azide and 50% glycerol pH 7.3.

Aliquoting is unnecessary for -20°C storage

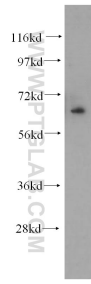
For technical support and original validation data for this product please contact:

T: 1 (888) 4PTGLAB (1-888-478-4522) (toll free in USA), or 1(312) 455-8498 (outside USA)

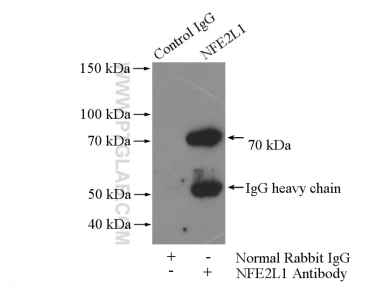
E: proteintech@ptglab.com  
W: ptglab.com

This product is exclusively available under Proteintech Group brand and is not available to purchase from any other manufacturer.

## Selected Validation Data



mouse skeletal muscle tissue were subjected to SDS PAGE followed by western blot with 12936-1-AP (NFE2L1 antibody) at dilution of 1:500 incubated at room temperature for 1.5 hours.



IP Result of anti-NFE2L1 (IP:12936-1-AP, 4ug; Detection:12936-1-AP 1:500) with mouse skeletal muscle tissue lysate 2200ug.