

# IMPDH2

## Polyclonal ANTIBODY

Catalog Number: 12948-1-AP

Featured Product

16 Publications

### Basic Information

Catalog Number:  
12948-1-AP

Size:  
39 µg/150 µl

Source:  
Rabbit

Isotype:  
IgG

Purification Method:  
Antigen affinity purification

Immunogen Catalog Number:  
AG3632

GenBank Accession Number:  
BC012840

GeneID (NCBI):  
3615

Full Name:  
IMP (inosine monophosphate) dehydrogenase 2

Calculated MW:  
514aa, 56 kDa

Observed MW:  
56 kDa

Recommended Dilutions:

WB 1:1000-1:6000

IP 0.5-4.0 ug for IP and 1:500-1:1000 for WB

IHC 1:100-1:500

IF 1:50-1:500

### Applications

Tested Applications:

IF, IHC, IP, WB, ELISA

Cited Applications:

ELISA, IF, IHC, WB

Species Specificity:

human, mouse, rat

Cited Species:

human, mouse

**Note-IHC: suggested antigen retrieval with TE buffer pH 9.0; (\*) Alternatively, antigen retrieval may be performed with citrate buffer pH 6.0**

Positive Controls:

WB : A549 cells; human brain tissue, human heart tissue, K-562 cells, mouse lung tissue, rat heart tissue, Hela cells, HepG2 cells

IP : K-562 cells;

IHC : human lung cancer tissue;

IF : HeLa cells;

### Background Information

IMPDH2, also named as IMPD2, belongs to the IMPDH/GMPR family. It is a rate limiting enzyme in the de novo synthesis of guanine nucleotides and therefore is involved in the regulation of cell growth. It may also have a role in the development of malignancy and the growth progression of some tumors. IMPDH2 is a key enzyme in the purine nucleotide biosynthetic pathway and constitutes a pivotal biological target for immunosuppressant and antiviral drugs. (PMID:21181270) IMPDH2 is highly enriched in RR(filamentous rods and rings). This antibody may have cross reaction with IMPDH1 due to the high homology.

### Notable Publications

Author	Pubmed ID	Journal	Application
S John Calise	30555474	Front Immunol	IF
Jonathan I Lake	24216510	J Clin Invest	IF
Pavel Juda	24980853	J Histochem Cytochem	WB, IF

### Storage

Storage:

Store at -20°C. Stable for one year after shipment.

Storage Buffer:

PBS with 0.1% sodium azide and 50% glycerol pH 7.3.

Aliquoting is unnecessary for -20°C storage

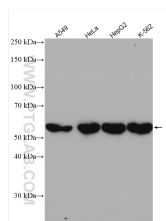
For technical support and original validation data for this product please contact:

T: 1 (888) 4PTGLAB (1-888-478-4522) (toll free in USA), or 1(312) 455-8498 (outside USA)

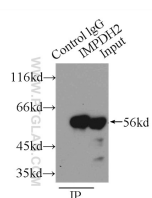
E: proteintech@ptglab.com  
W: ptglab.com

This product is exclusively available under Proteintech Group brand and is not available to purchase from any other manufacturer.

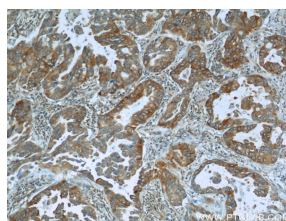
## Selected Validation Data



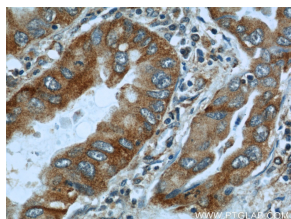
Various lysates were subjected to SDS PAGE followed by western blot with 12948-1-AP (IMPDH2 antibody) at dilution of 1:3000 incubated at room temperature for 1.5 hours



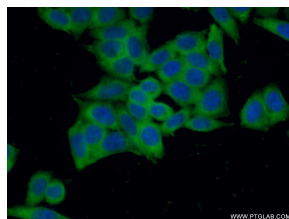
IP Result of anti-IMPDH2 (IP:12948-1-AP, 3ug; Detection:12948-1-AP 1:800) with K-562 cells lysate 4000ug.



Immunohistochemical analysis of paraffin-embedded human lung cancer slide using 12948-1-AP (IMPDH2 Antibody) at dilution of 1:50



Immunohistochemical analysis of paraffin-embedded human lung cancer slide using 12948-1-AP (IMPDH2 Antibody) at dilution of 1:50



Immunofluorescent analysis of (-20) Ethanol fixed HeLa cells using 12948-1-AP (IMPDH2 antibody) at dilution of 1:50 and Alexa Fluor 488-conjugated AffiniPure Goat Anti-Rabbit IgG(H+L)